

Design Development Presentation Watauga Elementary School Additions // Birdville ISD



ACKNOWLEDGEMENT

The PBK Team wishes to express our sincere appreciation to the Board of Trustees and Birdville ISD Administration and Staff for allowing our firm the opportunity to be involved in the design of the Watauga Elementary School Additions.

We also extend our utmost gratitude to the individuals who have attended numerous meetings and provided vital information during the design process. Their input and assistance has been most valuable to the success of this very important project.

Board of Trustees

Jack McCarty	President
Dolores Webb	Vice President
Joe Tolbert	Secretary
Brad Greene	Trustee
Richard Davis	Trustee
Ralph Kunkel	Trustee
Cary D. Hancock	Trustee

Administration

Dr. Darrell G. Brown	Superintendent
Elizabeth A. Clark	Associate Superintendent–Curriculum & Instruction
Joe Cammarata	Associate Superintendent - Student Services
Mike Seale	Associate Superintendent - Finance
Randy Sumrall	Executive Director of Technology
Mark Thomas	Communications Officer

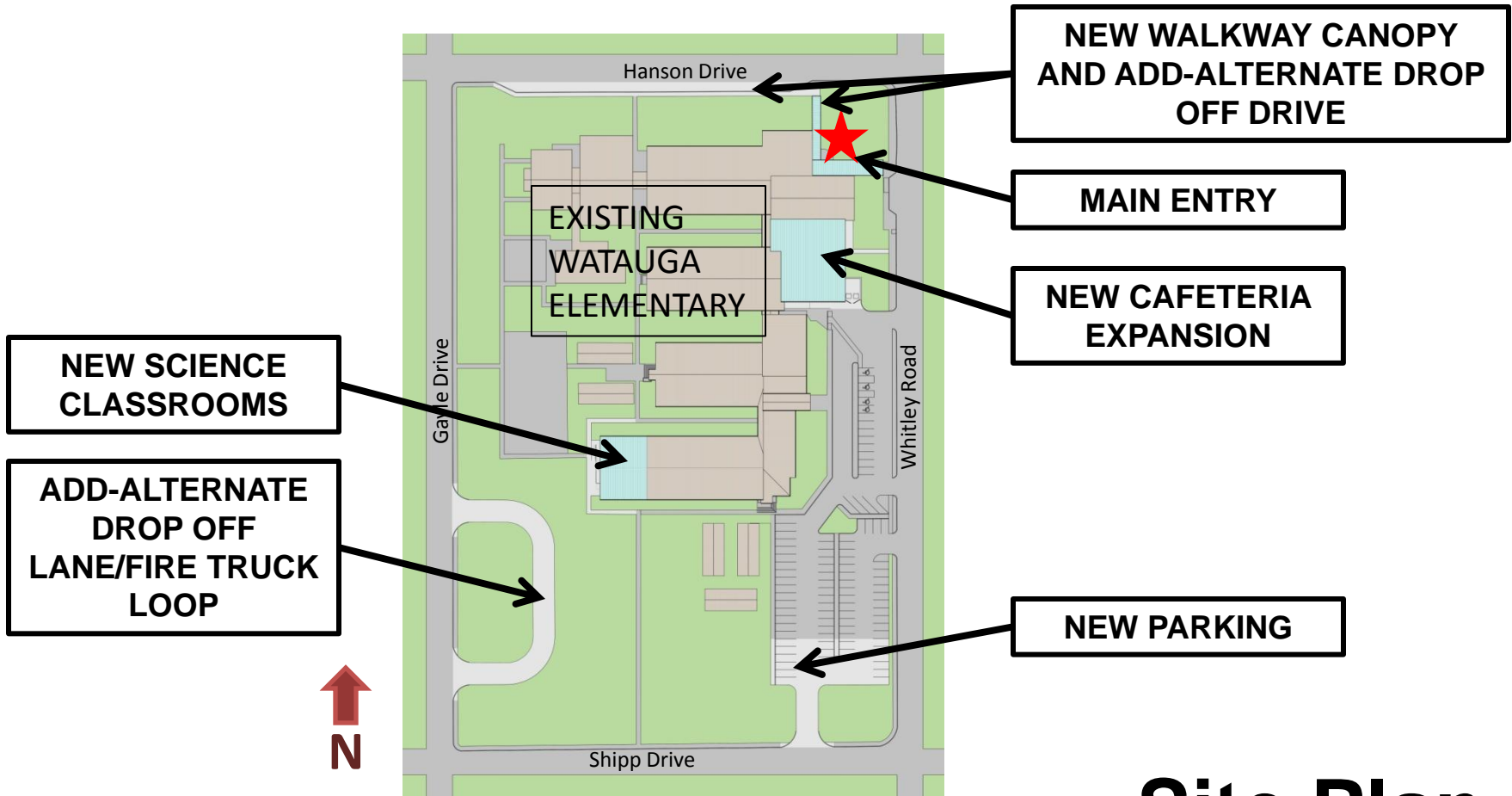
Campus Design Review

Conan Mathson
Darrell Siems
Justin Vercher
Sarah Upchurch
Sean Halbach
Judy Sargent
Brenda Swirczynski

Thank You!



ARCHITECTURAL DRAWINGS & IMAGES



Site Plan

**NEW WALKWAY CANOPY
AND ADD-ALTERNATE DROP
OFF DRIVE**

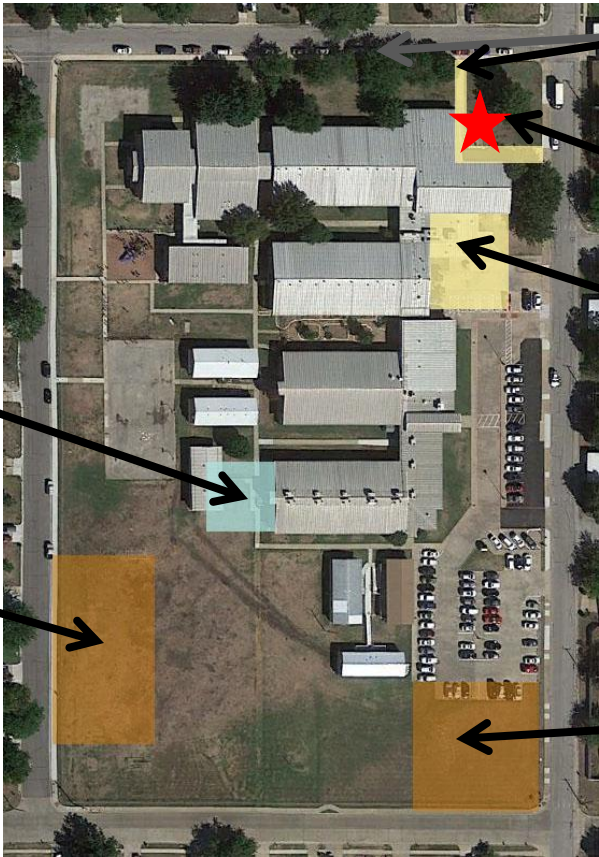
MAIN ENTRY

**NEW CAFETERIA
EXPANSION**

NEW PARKING

**NEW SCIENCE
CLASSROOMS**

**ADD-ALTERNATE
DROP OFF
LANE/FIRE TRUCK
LOOP**



Existing Site



MAIN ENTRY

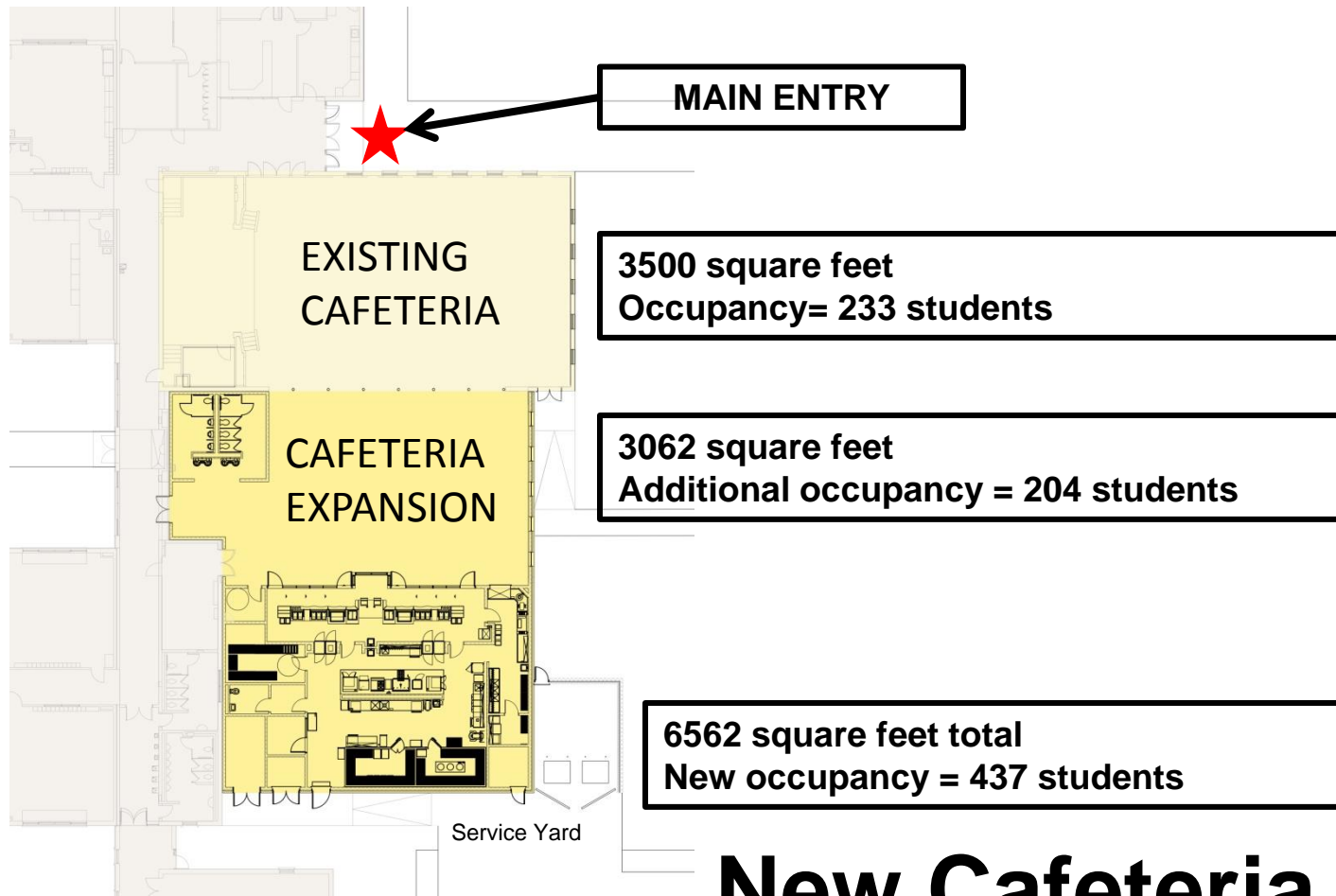
EXISTING
CAFETERIA

NEW CAFETERIA EXPANSION

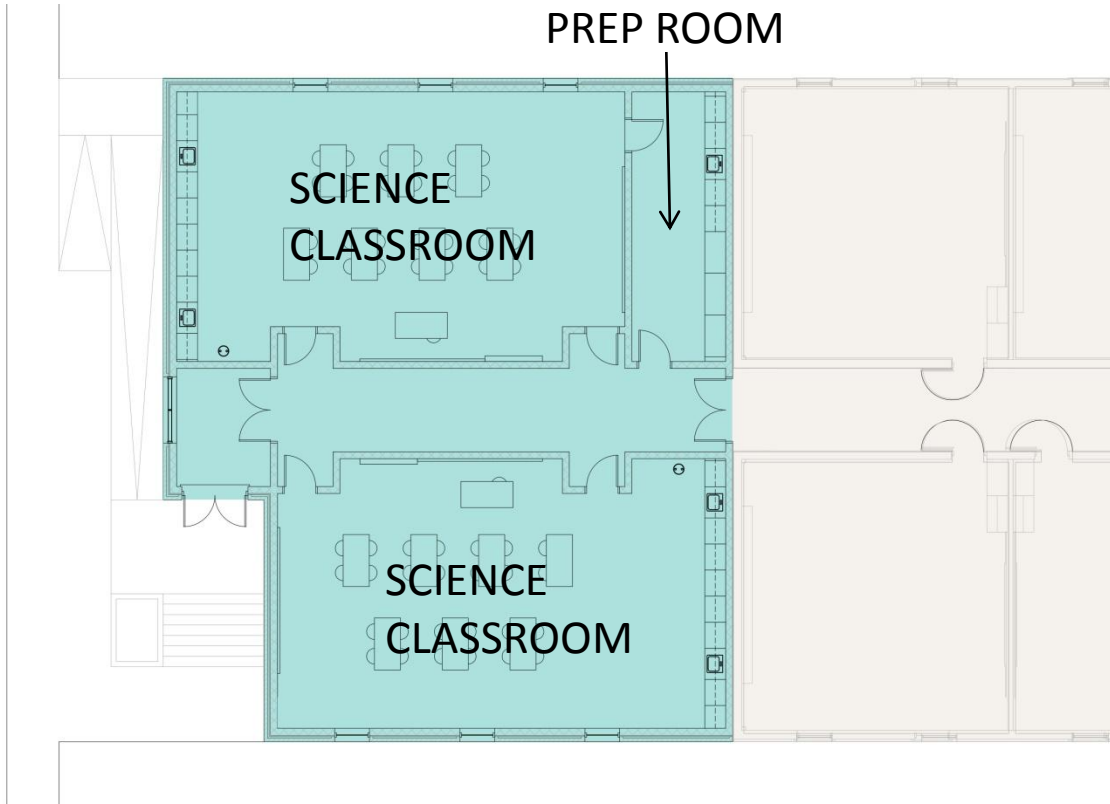
NEW SCIENCE
CLASSROOMS



Floor Plan



New Cafeteria



New Science Labs



Exterior View



Interior View - Cafeteria



Interior View – Science Classroom



PROJECT SCHEDULE

DESIGN DEVELOPMENT PHASE

JUNE 26 – JULY 23, 2015

Present Design Development to Board of Trustees.....JULY 23, 2015

CONSTRUCTION DOCUMENTS PHASE

JULY 7 – AUGUST 28, 2015

100% Issue for ProposalsAUGUST 28, 2015

BIDDING PHASE

AUGUST 28 – SEPTEMBER 28, 2015

Receive ProposalsSEPTEMBER 28, 2015

Present Proposals to Board of TrusteesOCTOBER 22, 2015

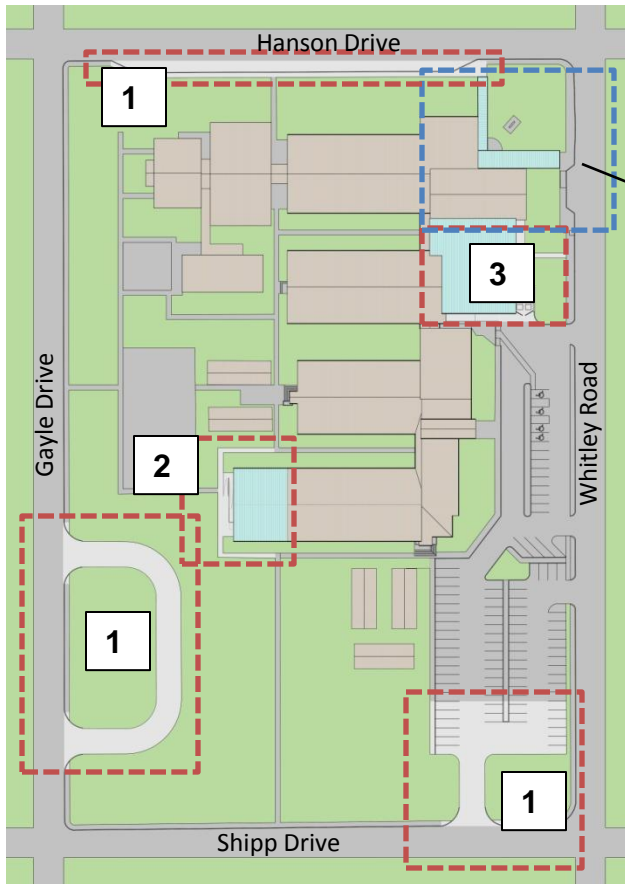
CONSTRUCTION PHASE

OCTOBER 23, 2015 – AUGUST 1, 2016

Substantial Completion DateAUGUST 1, 2016

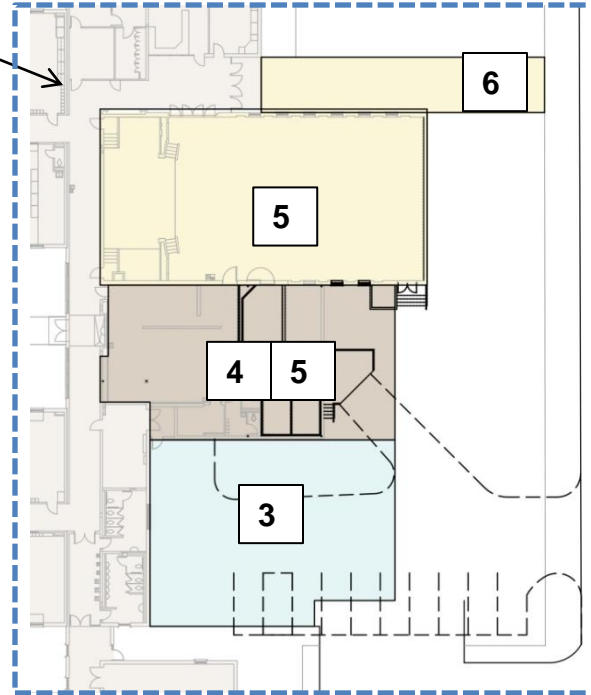


Project Schedule



PHASE 1 –

- 1. COMPLETE NEW PAVING WORK, INCLUDING ANY CHOSEN ALTERNATES**
- 2. BUILD NEW SCIENCE CLASSROOMS AND ASSOCIATED PAVING**
- 3. BUILD NEW KITCHEN AND ASSOCIATED PAVING**



PHASE 2 –

- 4. DEMOLISH EXISTING KITCHEN**
- 5. BUILD NEW CAFETERIA EXPANSION AND RENOVATE EXISTING CAFETERIA**
- 6. BUILD NEW WALKWAY CANOPY AT MAIN ENTRANCE**

Phasing Plan

QUESTIONS?

THANK YOU
