

SMARTSENSE End-User Education Site Licence Conditions

1. Definitions

The following expressions have the meanings given here:

- 'S3' means **SmartSchool Systems Limited**, being either owner of all intellectual property rights in the Software
- 'Documentation' means the printed user documentation supplied with the Software inside the pack.
- 'Software' means the programs contained in object-code form on the disc(s) supplied with these conditions:

2. Licence

S3 grants to the licensee a non-transferable non-exclusive licence (or sub-licence) as follows:

- (1) The licence permits the licensee to make further copies of the title for use within the premises of the Licensee subject to the conditions set out below.
- (2) Copies made in accordance with this licence may not be loaned, sold or used outside the premises of the Licensee other than as stated below.
- (3) The content of the title being copies under the terms of this licence may not be amended, changed or altered in anyway. It may not be translated into another language nor will it be versioned for use on any other computer system.
- (4) No part of the software may be incorporated into other programs developed or used by the licensee.
- (5) The copyright notices contained in the Software must be reproduced and included in all copies of the Software.
- (6) Documentation is covered by copyright; refer to the document for copyright details.
- (7) Copies made under the terms of this licence may be used outside the premises listed in the attached schedule by:
 - (a) teachers/tutors preparing lessons;
 - (b) students undertaking work with the permission of the teacher/tutor;
 - (c) students using copies made under the terms of this licence in schools/colleges other than those listed in the attached schedule.
- (8) Copies used in accordance with (7) above may not be further copied whilst out of the premises of the licensee.

3. Term

This licence remains in effect unless you terminate it by (a) destroying the Software and all copies or (b) by failing to comply with the Conditions.

4. Limited Warranty and Disclaimer of Liability

1. S3 warrants the disc(s) upon which the Software is supplied to be free from defects in materials and workmanship under normal use for a period of ninety (90) days from the date of purchase, as evidenced by a copy of your receipt
2. The Software is supplied 'as is'; neither S3 nor the Developer makes any warranty, whether express or implied, as to the merchant ability of the Software or its fitness for any particular purpose. In no circumstances will SSS be liable for any damage, loss of profits, goodwill or for any indirect or consequential loss arising out of your use of the Software, or inability to use the Software, even if S3 has been advised of the possibility of such loss.

5. General

These conditions supersede any prior agreement, oral or written, between the licensee and S3 relating to the software.

System requirements

Operating System:	Windows XP or Vista
Display:	Minimum 800 x 600 with 256 colours. Recommended: 1024 x 768 with High Colour - 16-bit
Minimum Software:	Microsoft Internet Explorer 6.0 Windows Installer 3.1* (Windows 2000 & XP) Microsoft .NET Framework 2*

* If Microsoft .NET Framework 2 or Installer 3.1 is not detected during the installation set up process, they will be automatically installed prior to the **SMARTSENSE** application install. This will extend the installation time significantly.

The SMARTSENSE CD ROM

A Windows installer package (.msi) of the **SMARTSENSE** software is supplied on the CD ROM.

The Drivers folder on the CD contains the USB device drivers for both the SmartSense loggers and the AMC232USB DH USB Serial Adapter cable. The drivers will install to the local machine at the end of the **SMARTSENSE** software install.

A PDF format of the **SMARTSENSE** Software Manual, the SmartSense Q Primary Activities and the 5 Minute Activities are available in the Resources folder on the **SMARTSENSE** CD ROM. A copy of these documents will install to Start ► Programs ► SmartSchool Systems ► SmartSense Resources. It is advised that the latest version of Adobe Acrobat reader software is installed to read these documents.

Step 1: Install the SMARTSENSE software

USB users: Make sure the SmartSense logger is **not** connected to the USB port prior to, or while, the **SMARTSENSE** software is being installed.

- Log on as ADMINISTRATOR (or with equivalent access rights) on the system
- Close any open programs – you may need to restart your machine for configuration changes to be made.
- Insert the **SMARTSENSE** CD ROM into the CD Drive. This is an auto play CD ROM, meaning that Windows should detect the presence of the CD and automatically start up the **SMARTSENSE** auto run program. If the Autorun program fails to start, use Windows Explorer

to navigate the CD ROM contents and double click on the file **setup.exe**.

Note: If .NET Framework 2 is not detected, it will now install.

- Follow the on-screen instructions to complete the installation of **SMARTSENSE** and its associated files onto the hard disc.
- When the installation is complete, eject the CD ROM and store it safely.
- Restart your system.

Step 2: Connect an interface or data logger to the computer

• **Serial connection:**

Connect the interface/ data logger to the serial port on the computer. Note which serial port you have connected to e.g. COM 1, as this information will be required when you start the **SMARTSENSE** software.

• **USB connection:**

The first time an **SMARTSENSE** unit e.g. Q3, Q5, Link, or Q Advanced is connected to a USB port on the computer, the USB drivers will need to be installed.

1. Connect the **SMARTSENSE** unit to the USB port on the computer.
2. Windows will automatically detect a new device and install the drivers.

Step 3: Start the SMARTSENSE program for the first time



Start the **SMARTSENSE** software e.g. Start ► Programs ► SmartSchool Systems ► and double click on **SMARTSENSE** Software.

Step 4: Select a User level

The first time the **SMARTSENSE** program is opened a 'Select Program Level' window will automatically open. Select a suitable user level.

- Level 1 is aimed at 'start' level (e.g. up to 9 years old).
- Level 2 is aimed at 'mid' level (e.g. 9 – 15 years old)

Open Worksheet

To select and open a worksheet and its accompanying experimental set up file.



Open Setup

To select and open an experimental set up file. This will pre-set the software for a specific operation.

Note: Open Setup is not available when the user level is set to Level 1.



Set up Remote

Used to set up the available options for capturing data while disconnected from the computer (remote). These options can include the duration of a recording, the time between each sample and triggers. (The options available will depend on the level you have selected to work at).


Note: Set up Remote is not available when the user level is set to Level 1.




Retrieve Remote

Use this option to retrieve a data set stored in your data logger's memory.

have selected to work at). When your selection has been made, click on Finish.


Click on the **Start/Stop** icon . Recording will start when the start condition you have selected is met e.g. if None is the selected trigger then the recording will start as soon as the **Start/Stop** icon is clicked. The recording will stop when the selected time span has passed.

Note: If you want to stop a recording before it has run the full term, click on the **Start/Stop** icon. 



Scope

Scope is a simple oscilloscope type display. A scope trace is redrawn continuously on the screen as long as data is being measured. It is ideal for demonstrating fast events where there are rapid changes e.g. ECG traces, sound waveform.

Make your selection from the control panel and click on the **Start/Stop** icon  to begin recording.


Note: Scope is not available when the user level is set to Level 1.



Timing

Timing is used to allow students to study Time, Velocity, Acceleration, Momentum and Kinetic Energy relationships using switch-type (digital) sensors such as Light Gates. Sensors are connected to inputs 5:A or 5:A & 6:B.

A recording wizard will open with the options available to select before recording data. (The availability of the options will depend on the level you have selected to work at). When the selection has been made, click on Finish.

Click on the **Start/Stop** icon  and a reading will be displayed when a change in signal is detected from the digital sensors.



Open File

Used to load a previously saved .SSL or .sid file. Locate the correct file and click on open.



- Level 3 is aimed at 'exam' level (e.g.15 years plus).

Note: The program level can easily be altered at anytime using the Level icon once a logging option has been opened. Click on the Level icon and cycle through the levels. The currently selected level will be saved when the **SMARTSENSE** program is closed.

Step 5: Select an Interface and Connection

The first time **SMARTSENSE** is opened a 'Select Interface' window will automatically open to allow the correct interface and connection to be selected.

(a) Select the correct interface from the drop-down menu.

- **SmartSense Range** for an **SMARTSENSE** data logger or interface

- **Flash Logger** for the **SMARTSENSE** Flash Logger

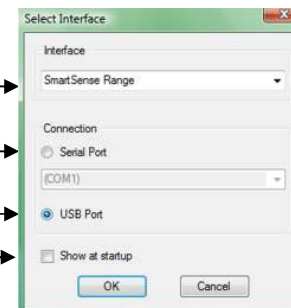
- **Sense and Control** for the Sense & Control or Sense & Control EasyLog.

- **Example Data** for stored example data to show how sensor readings are displayed. If this option is selected you will not be able to collect data from your interface or data logger.

(b) Select the appropriate connection i.e. either Serial or USB Port.

- If you are connecting via a **USB** lead, select USB Port.
- If you are using a **serial** lead, select Serial Port and then the number of the communications port used from the drop-down menu e.g. Communications Port (COM2).
- If you are using a **USB/serial adapter**, select Serial Port and then the adapter from the serial ports drop-down list e.g. AMC232USB DH USB Serial Port (COM4).
- If you are using **Bluetooth**, select Serial Port and then the serial port configured for Bluetooth from the drop down list e.g. Bluetooth Communications Port (COM4).

(c) If these settings will stay the same leave the 'Show at startup' box unticked. If the box is ticked the 'Select Interface' window will



(a) →

(b) →

(c) →

↑
(d)

automatically open when you next start **SMARTSENSE**, so you can check that the currently selected Interface and method of connection are correct. This is useful if you use different types of interface (e.g. both Sense & Control and **SMARTSENSE** Advanced units) or if the interfaces use different methods of connection (e.g. use both **SMARTSENSE** Advanced units which connect via a serial port and **SMARTSENSE** LINK units which connect via a USB port).

(d) Click on OK. The program will save the current selection.

Note: To change this selection at any time, CANCEL any 'failure to connect' errors, select **Interface** from the **File** menu and alter the interface selection.

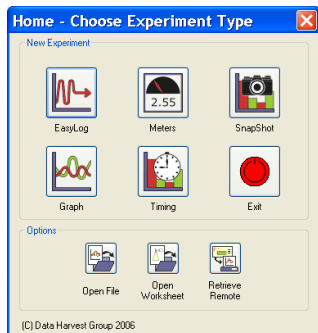
Once a connection is established the Home page will open, click on the appropriate icon.

The Home page



Home is the main navigation page, which contains the icons for all available options.

The appearance of the Home page and the complexity of the toolbars and functions in the experiment options are altered by the User level selected. The more bars, the higher the user level.



(C) Data Harvest Group 2006



The Home page at Level 2 and 3



Note: If the interface/ data logger detected cannot use an option it will appear greyed out e.g. the Setup and Retrieve Remote options will only be available for data loggers which support remote data collection.

The Home page at Level 1



EasyLog

The Graph window will open pre-set to record sensor values **continuously** as a line graph until stopped.

Click on the **Start/Stop** icon  to start recording. Logging will start with a time span of 30 seconds and when it has elapsed the time span will double automatically. This will continue until the recording is stopped by clicking on the **Start/Stop** icon. 



Meters

The Meters window gives an introduction to sensors and how they respond to change. Up to four section displays can be open at any one time and they can be any combination of sensors and displays.



The program will open with live data being displayed from a sensor in a Numeric window. Click on the appropriate picture icon on the Menu bar to open other section displays i.e. Numeric, Gauge, Colour Change or Bar. To alter the sensor displayed in a section, **right** click in the individual section window and select the sensor from the list.

Click on the **Start/Stop** icon  to stop recording.



Snapshot

The Graph window will open pre-set to record sensor values on demand (**manual sampling**) with a bar graph display.

Click on the **Start/Stop** icon  to start recording. Click in the graph area to record the current value for each active sensor. Click on the **Start/Stop** icon  to stop data being recorded.



Graph

Graph is used to record sensor values against a **chosen time span** as a line graph display. The window opens with a real time logging wizard from which the time span, interval between samples, start condition and triggers for the recording can be chosen. (The options available will depend on the level you