

Advanced Network Devices Legend:

S1 - IPSCM	= 109
S2 - IPSWD-SM	= 52
S3 - IPCDS-RWD	= 8
S4 - IPSWS-SM	= 24
S4 - 2nd floor Gym	= 4
S6 - IPSWS-SM-O	= 25
S6 - IPSTROBE	= 4
S6 - 2nd floor Gym	= 2

of drops to move = 24
of drops to pull = 48

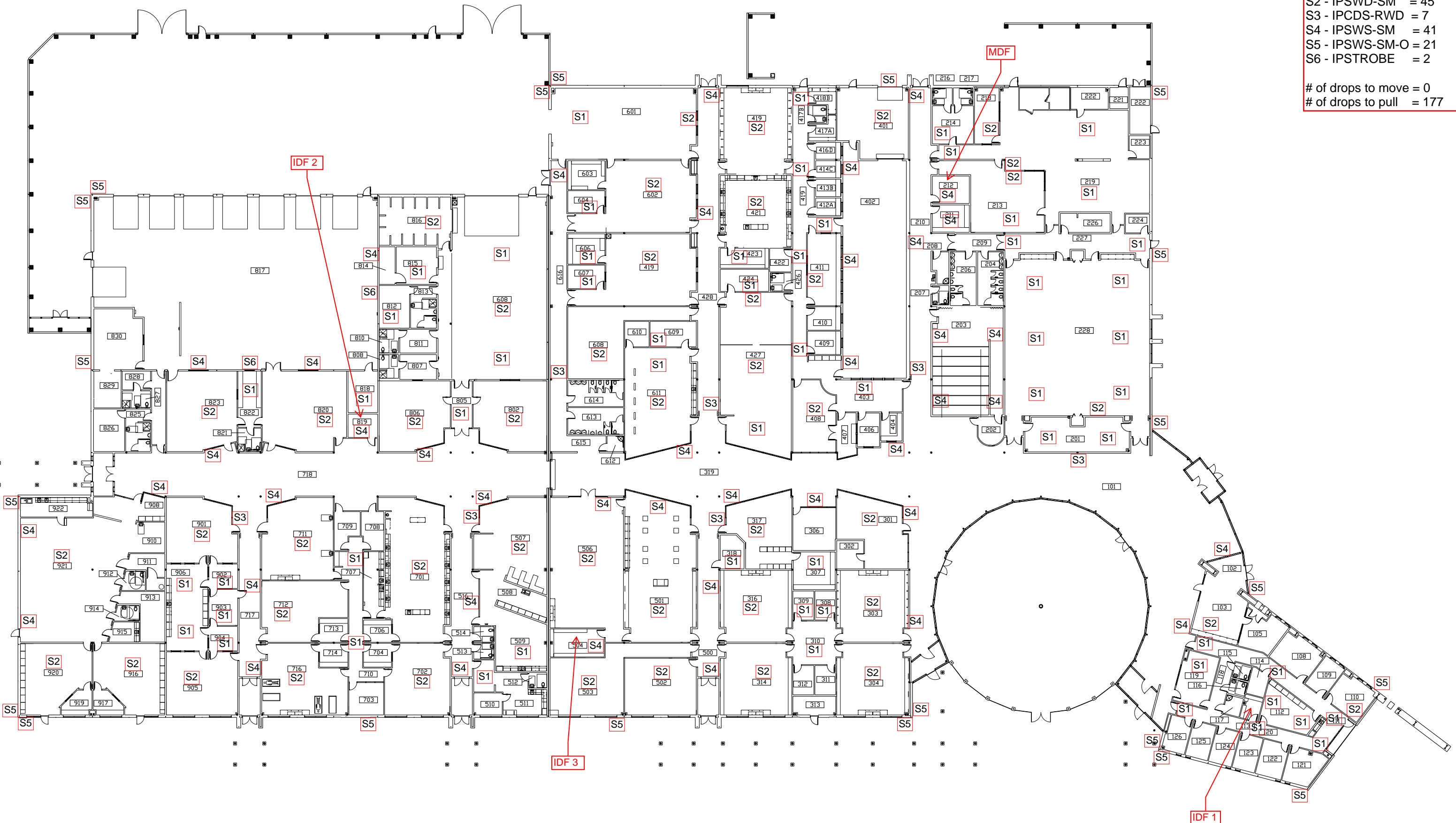


SHANNON EDUCATION CENTER

FEBRUARY 2013

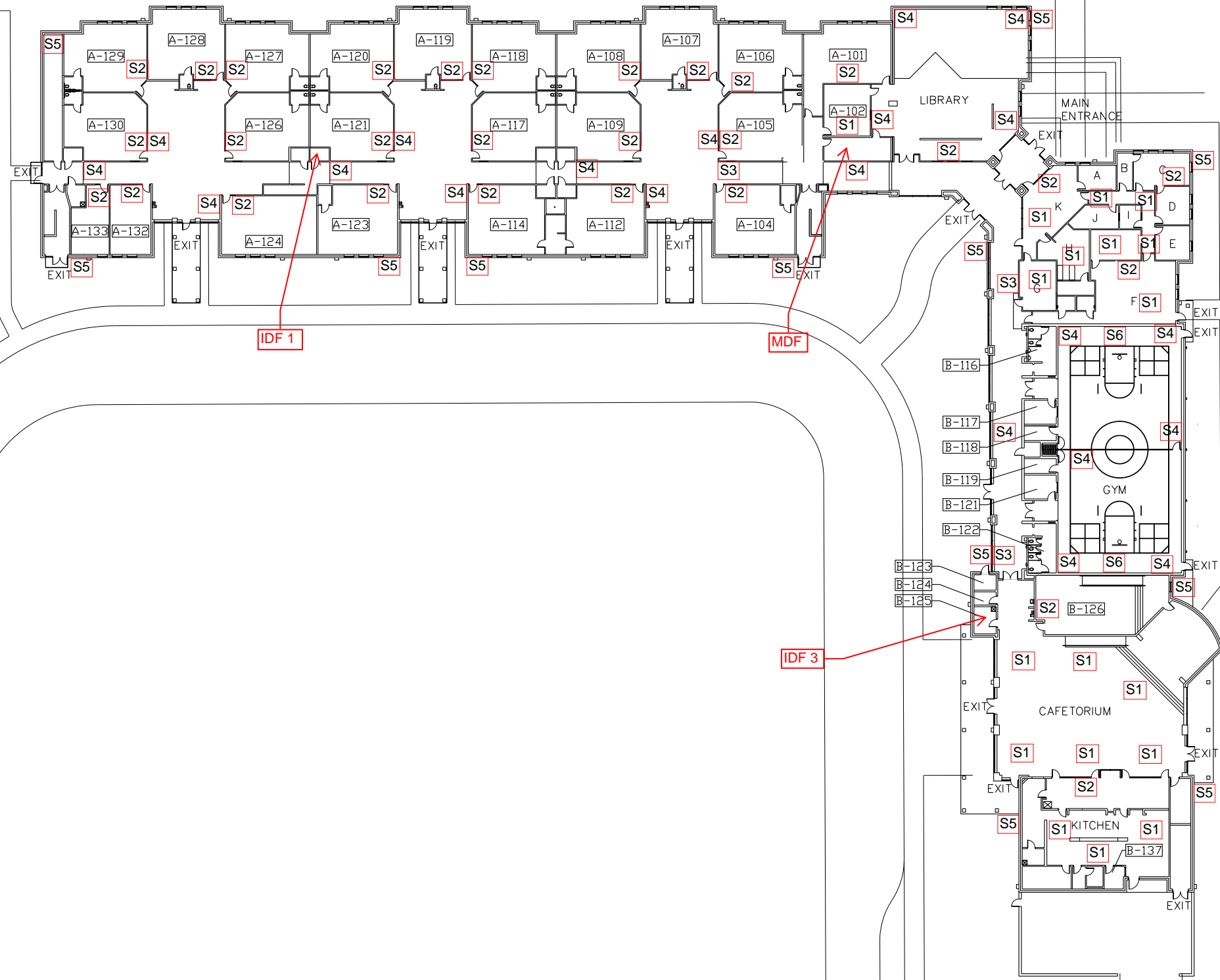
Advanced Network Devices
 Legend:
 S1 - IPSCM = 61
 S2 - IPSWD-SM = 45
 S3 - IPCDS-RWD = 7
 S4 - IPSWS-SM = 41
 S5 - IPSWS-SM-O = 21
 S6 - IPSTROBE = 2

of drops to move = 0
 # of drops to pull = 177



CAREER AND TECHNOLOGY CENTER

FEBRUARY 2013



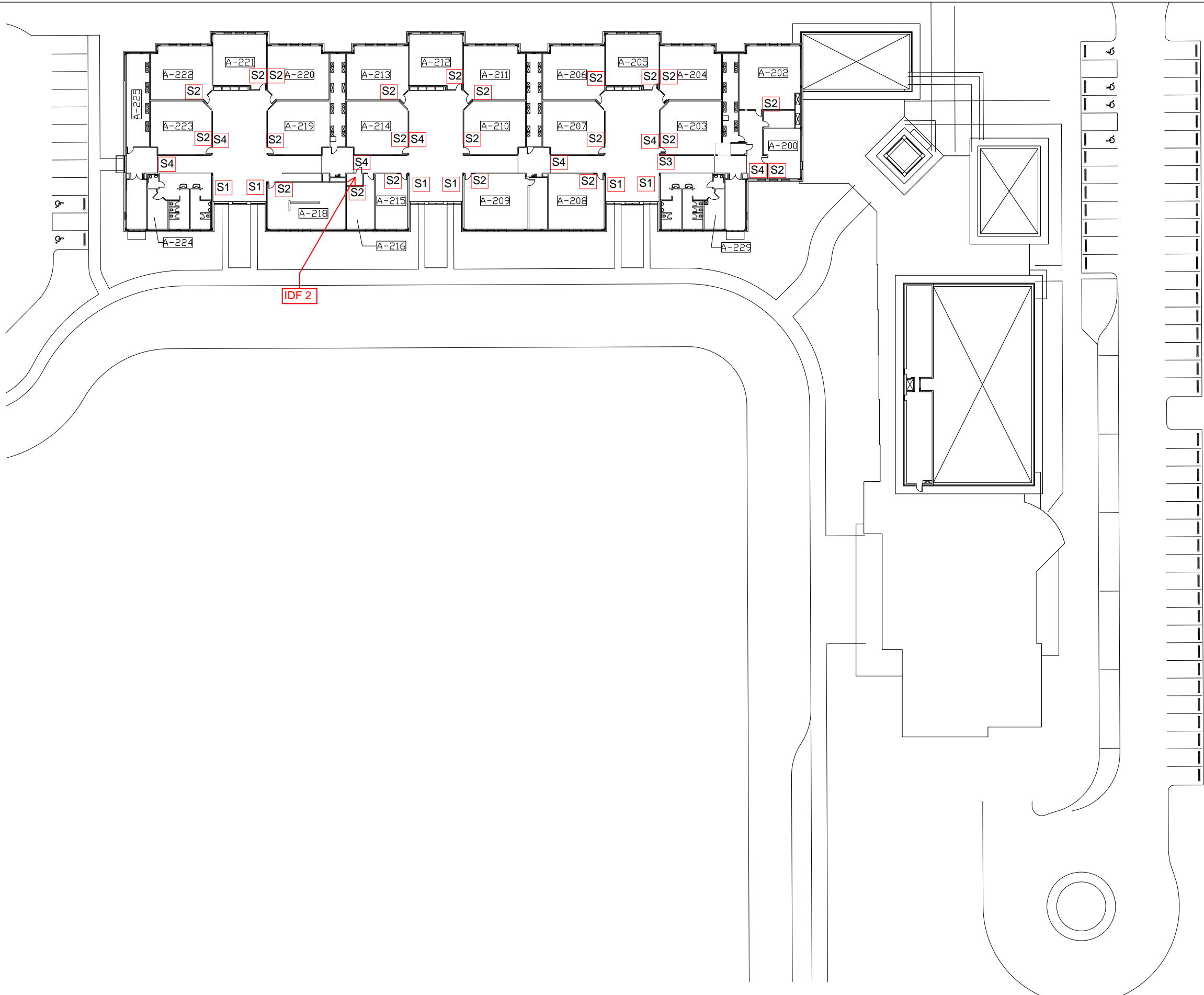
JACK BINION ELEMENTARY SCHOOL – FIRST FLOOR

FEBRUARY 2013

Advanced Network Devices Legend:

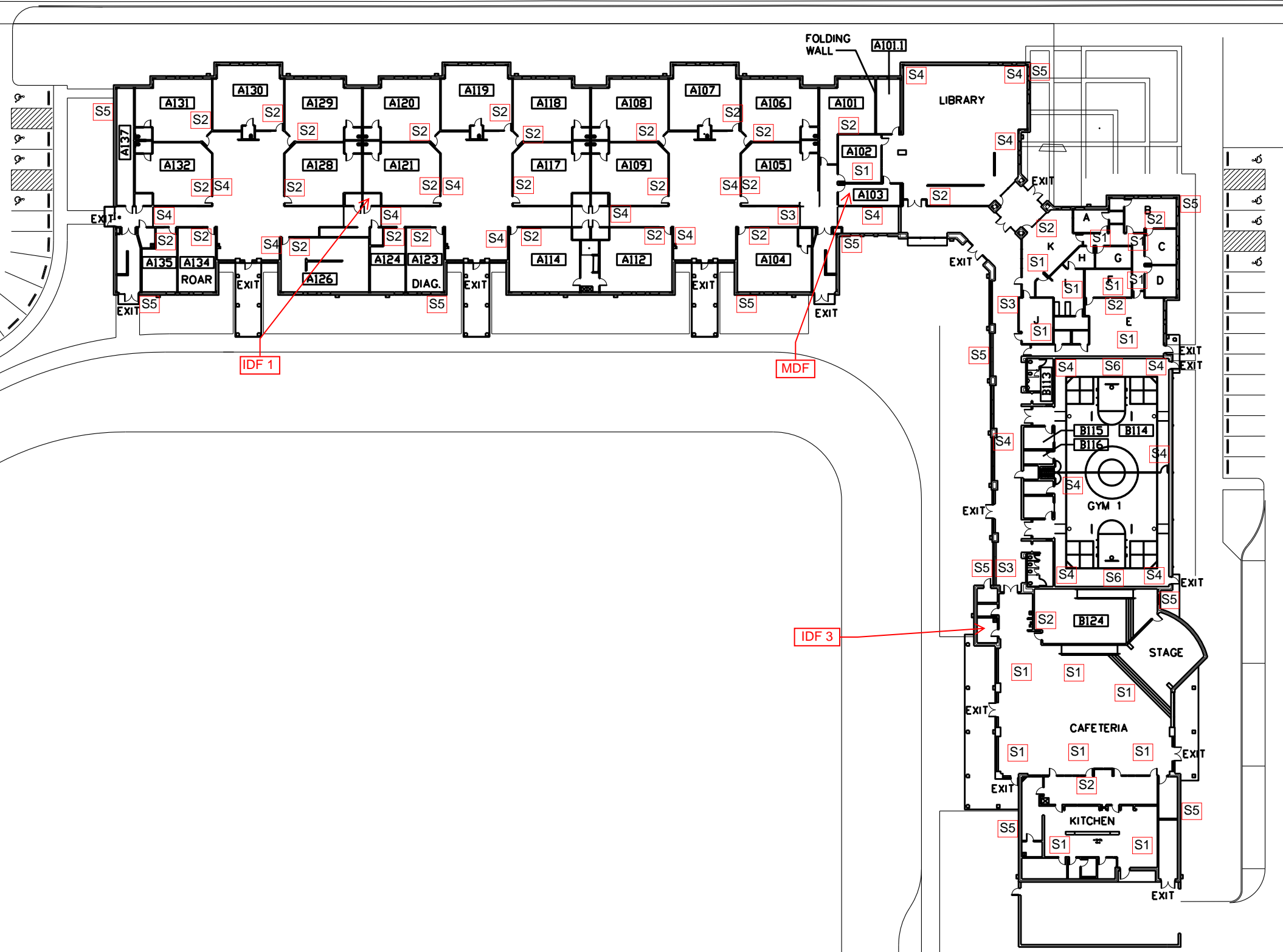
S1 - IPSCM	= 24
S2 - IPSWD-SM	= 52
S3 - IPCDS-RWD	= 4
S4 - IPSWS-SM	= 28
S5 - IPSWS-SM-O	= 12
S6 - IPSTROBE	= 2

of drops to move = 45
of drops to pull = 72



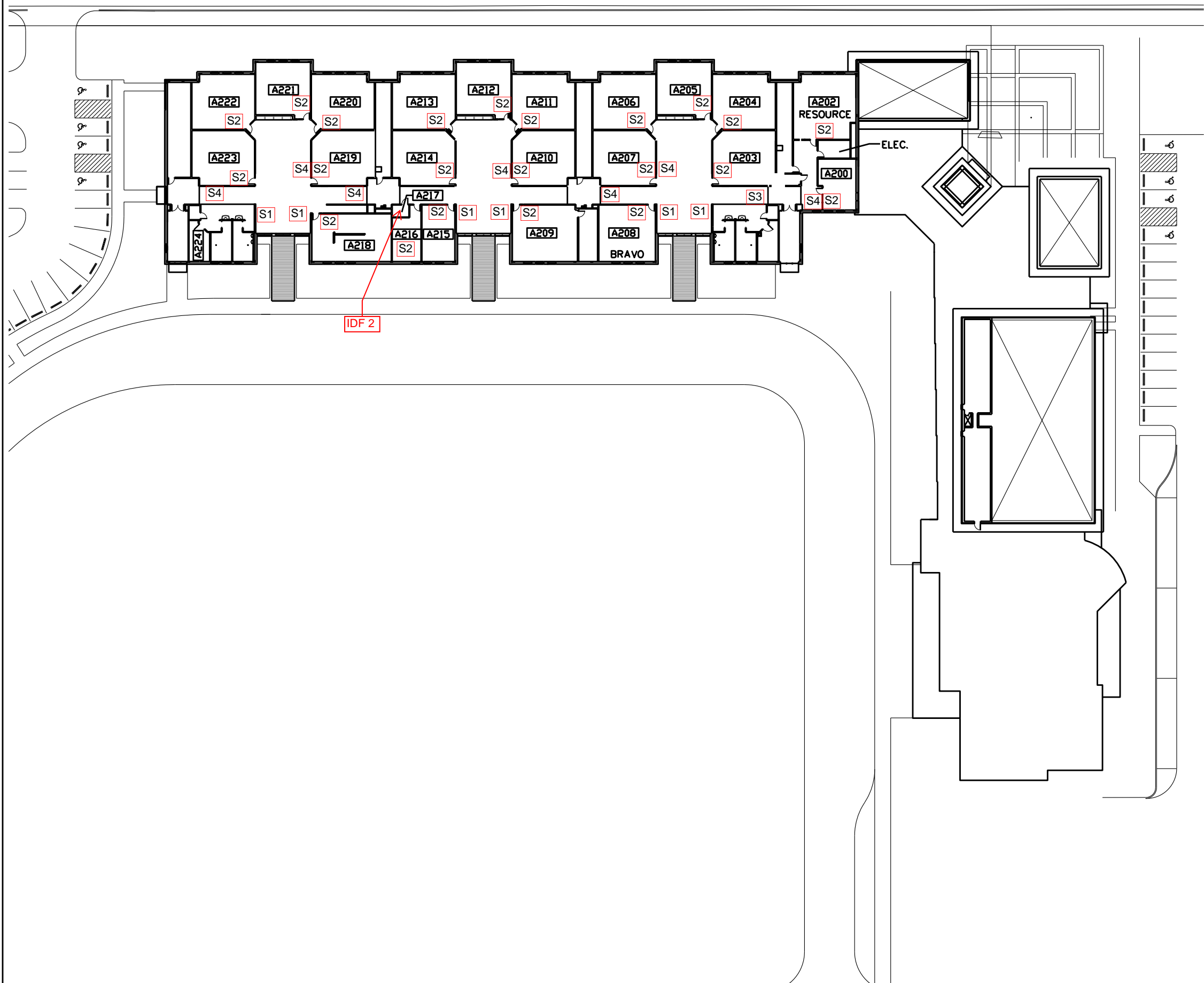
JACK BINION ELEMENTARY SCHOOL – SECOND FLOOR

FEBRUARY 2013



Advanced Network Devices Legend:	
S1 - IPSCM	= 24
S2 - IPSWD-SM	= 52
S3 - IPCDS-RWD	= 4
S4 - IPSWS-SM	= 28
S5 - IPSWS-SM-O	= 12
S6 - IPSTROBE	= 2
# of drops to move = 45	
# of drops to pull = 72	

MACK ROAD

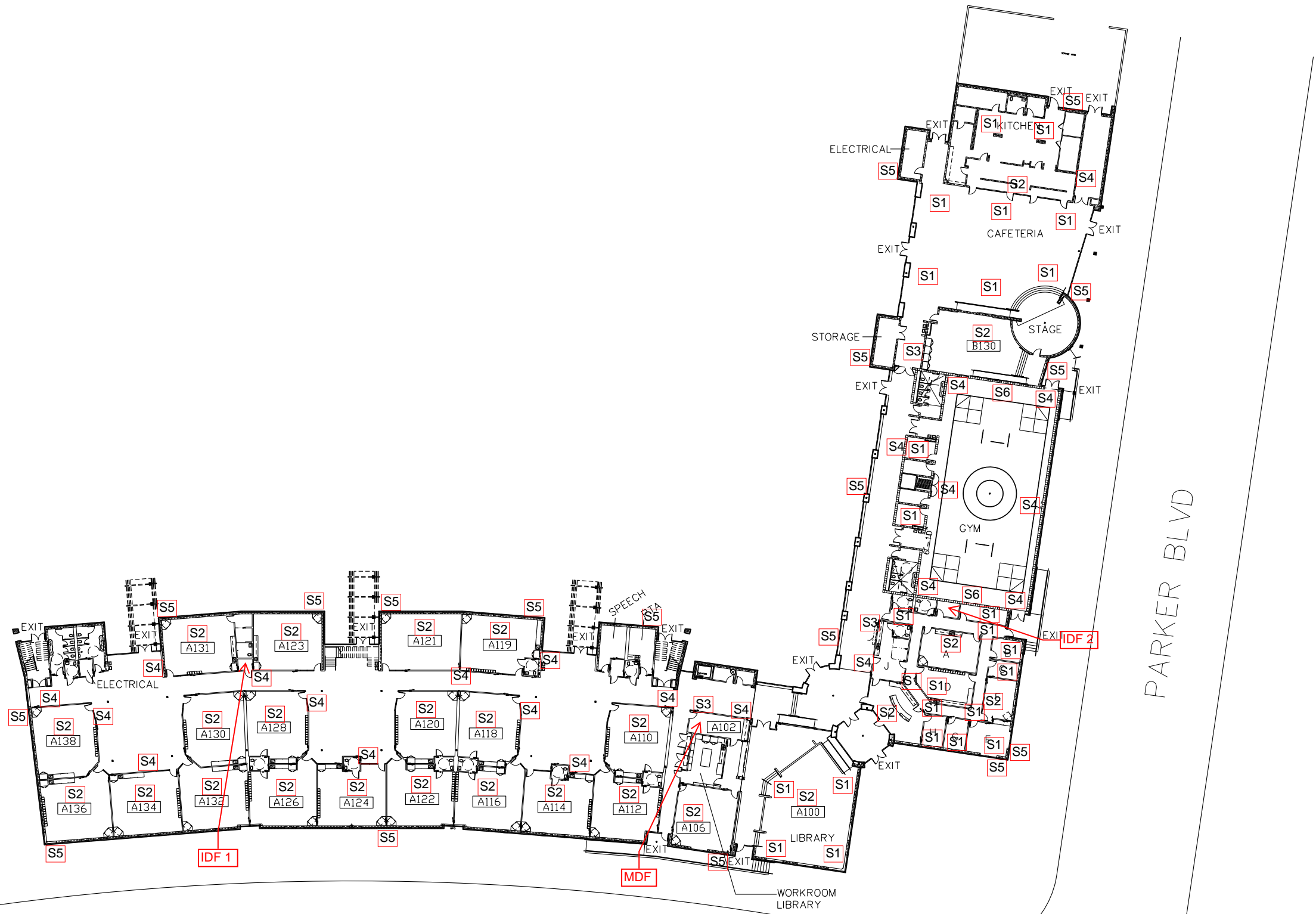


CAROLDEAN



O H STOWE ELEMENTARY SCHOOL – SECOND FLOOR

FEBRUARY 2013



BRIDGE STREET

PARKER BLVD

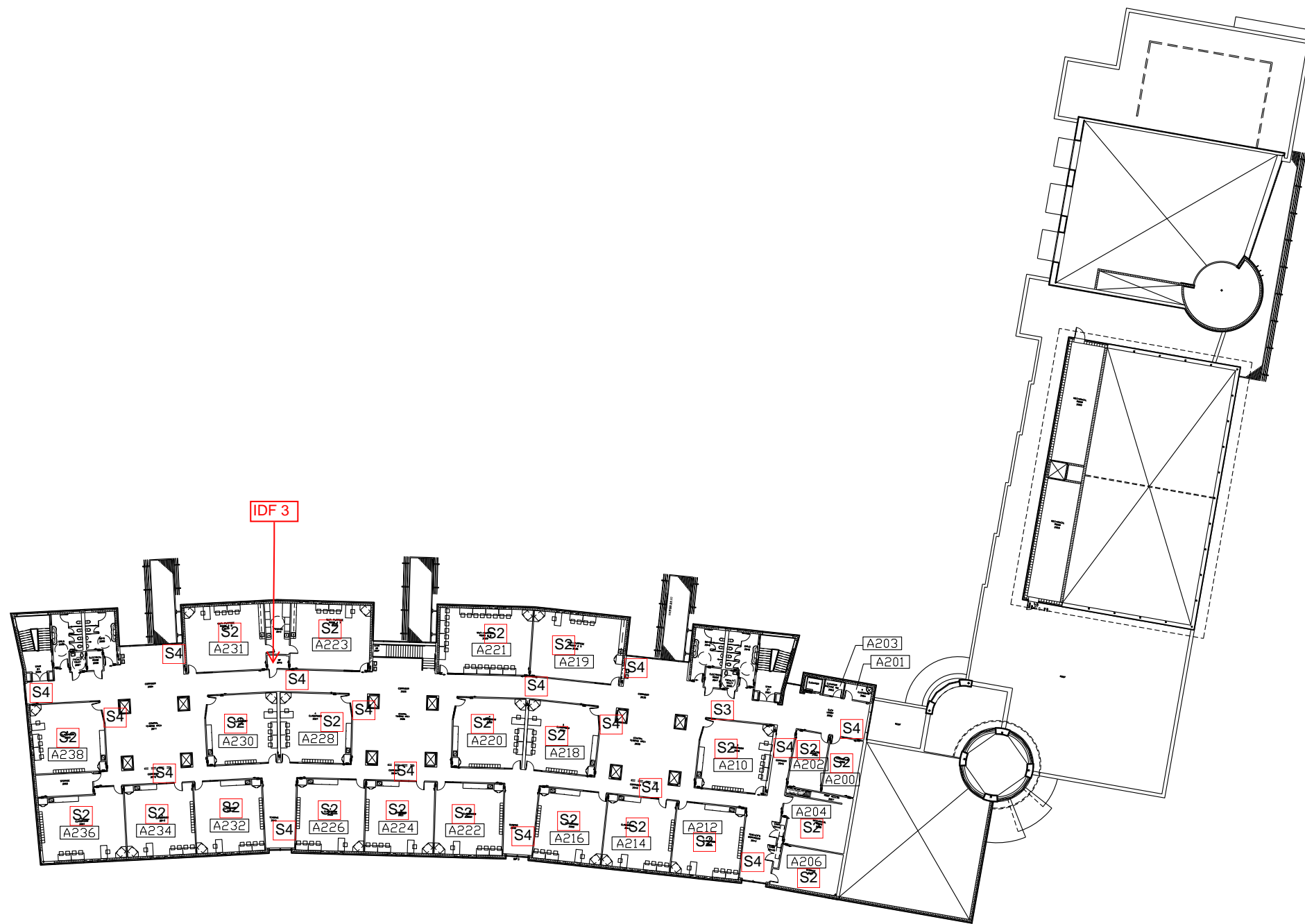


WALKER GREEK ELEMENTARY SCHOOL – FIRST FLOOR

FEBRUARY 2013

Advanced Network Devices Legend:	
S1 - IPSCM	= 25
S2 - IPSWD-SM	= 48
S3 - IPCDS-RWD	= 4
S4 - IPSWS-SM	= 37
S5 - IPSWS-SM-O	= 18
S6 - IPSTROBE	= 2

of drops to move = 48
of drops to pull = 86



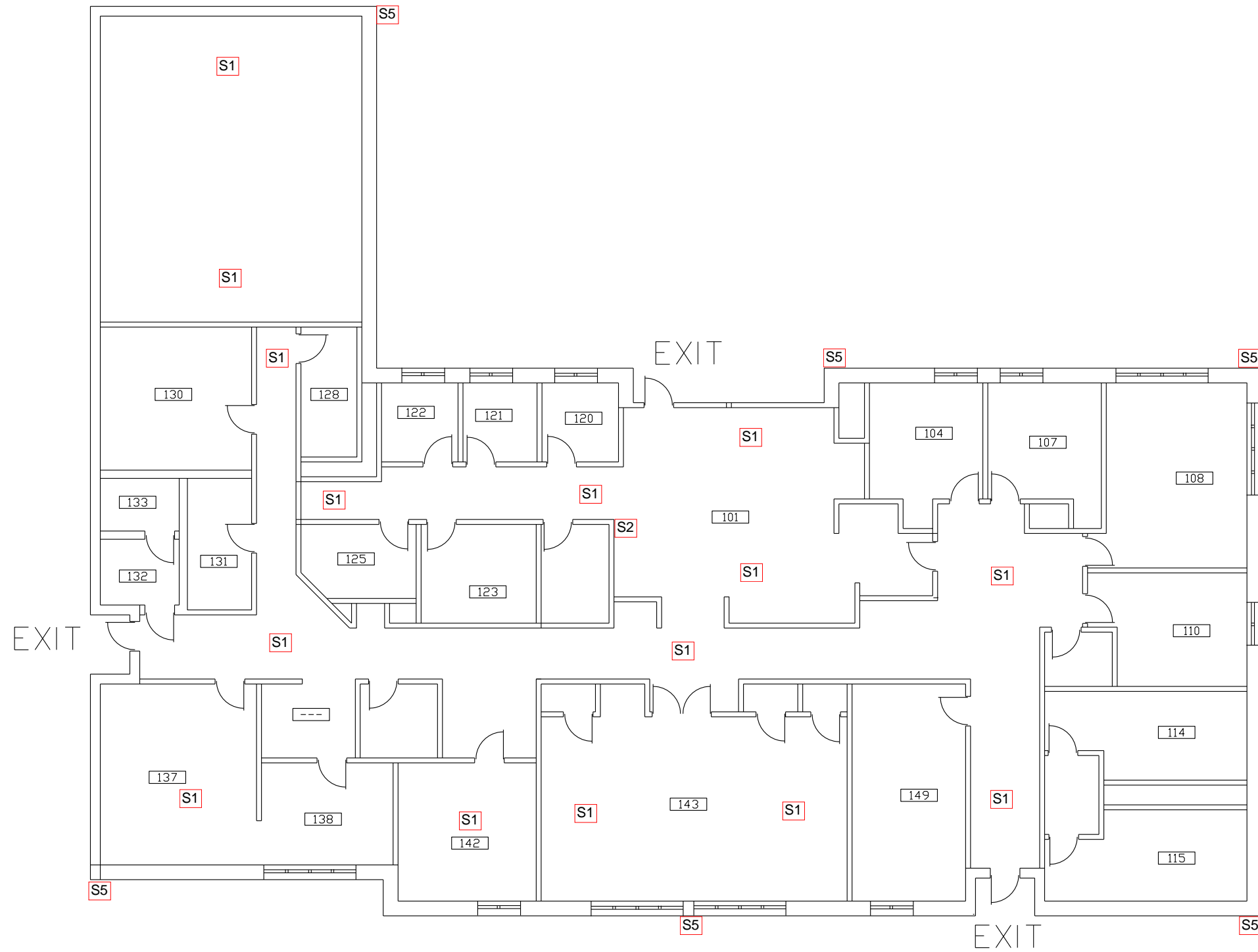
WALKER GREEK ELEMENTARY SCHOOL – SECOND FLOOR

FEBRUARY 2013

Advanced Network Devices
Legend:

- S1 - IPSCM = 25
- S2 - IPSWD-SM = 48
- S3 - IPCDS-RWD = 4
- S4 - IPSWS-SM = 37
- S5 - IPSWS-SM-O = 18
- S6 - IPSTROBE = 2

of drops to move = 48
of drops to pull = 86



This area cabled back to IDF 3 of "012"



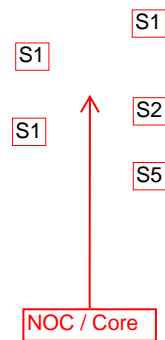
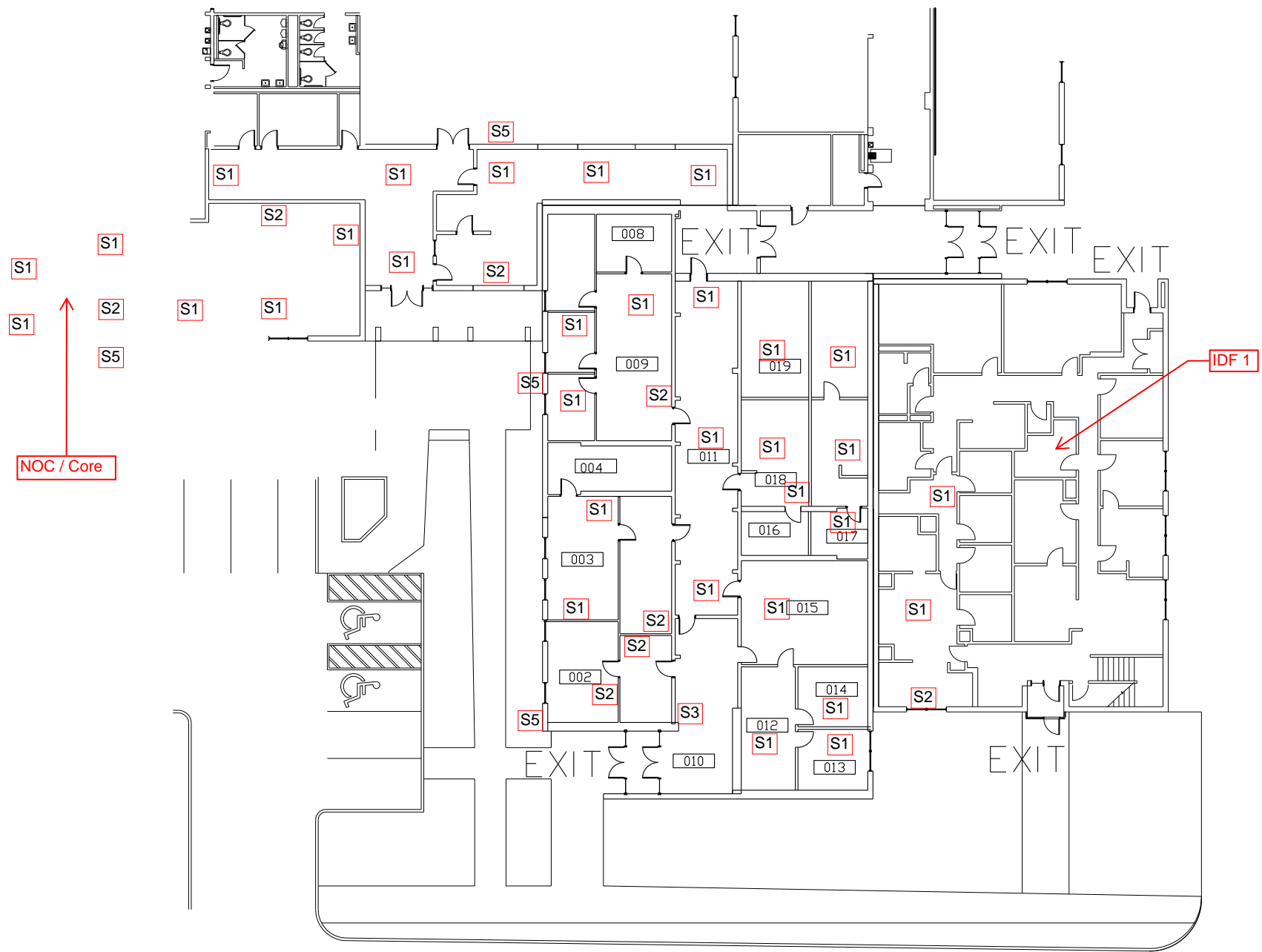
BISD BUILDING AND GROUNDS

FEBRUARY 2013

Advanced Network Devices Legend:

- S1 - IPSCM = 15
- S2 - IPSWD-SM = 1
- S3 - IPCDS-RWD = 0
- S4 - IPSWS-SM = 4
- S5 - IPSWS-SM-O = 10
- S6 - IPSTROBE = 0

of drops to move = 0
 # of drops to pull = 22



CARSON STREET



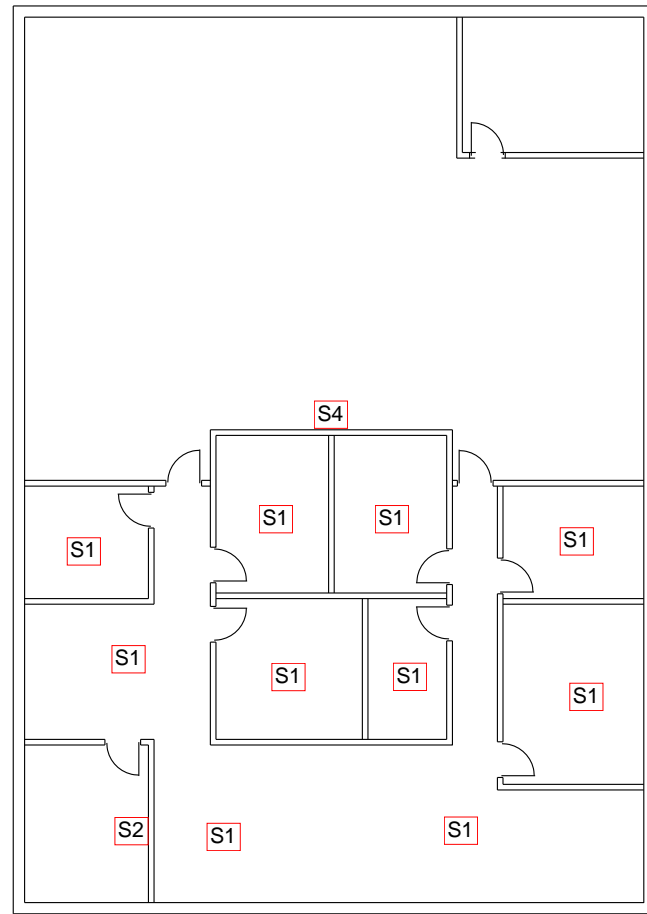
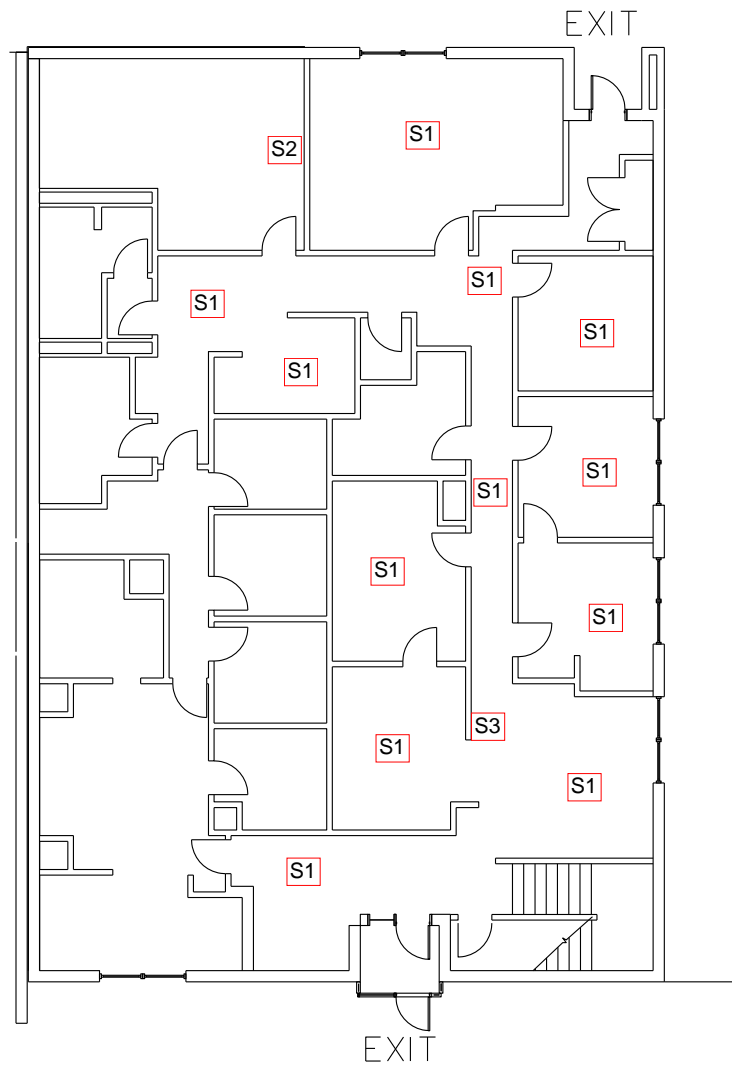
MIS AT SHANNON CENTER

FEBRUARY 2013

Advanced Network Devices
Legend:

S1 - IPSCM	= 31
S2 - IPSWD-SM	= 8
S3 - IPCDS-RWD	= 1
S4 - IPSWS-SM	= 0
S5 - IPSWS-SM-O	= 5
S6 - IPSTROBE	= 0

of drops to move = 0
of drops to pull = 45



CARSON STREET



BISD BUSINESS OFFICE—FIRST FLOOR

FEBRUARY 2013

NORTH

This area cabled back
to IDF 1 of "971"



BISD BUSINESS OFFICE—SECOND FLOOR

FEBRUARY 2013

NORTH

Advanced Network Devices

Legend:

- S1 - IPSCM = 22
- S2 - IPSWD-SM = 2
- S3 - IPCDS-RWD = 1
- S4 - IPSWS-SM = 1
- S5 - IPSWS-SM-O = 0
- S6 - IPSTROBE = 0

of drops to move = 0

of drops to pull = 26