

Project No. 1886.00

February 28, 2019

ADDENDUM NO. 3
TO THE
DRAWINGS AND PROJECT MANUAL
FOR
**CONTROLLED ENTRY AT 15 CAMPUSES
BIRDVILLE ISD
NORTH RICHLAND HILLS, HALTOM CITY, HURST AND WATAUGA, TEXAS**



02/28/2019

VLK ARCHITECTS, INC.
2821 West 7th Street, Suite 300
Fort Worth, TX 76107
817.633.1600 voice
817.633.9600 fax
vlkarchitects.com

3.1 GENERAL

- A. This addendum modifies the drawings and project manual, dated February 14, 2019, as noted within and shall become part of the Contract Documents.
- B. Proposers shall acknowledge receipt of this addendum in the space provided on the proposal form. Failure to do so may subject proposer to disqualification.
- C. Each holder of proposal documents registered with the Architect will receive a copy of the addendum. Each prime proposer is responsible for distribution of information conveyed by this addendum to its sub-proposers and suppliers.

3.2 SHEET A12.11 – NORTH RIDGE MIDDLE SCHOOL FLOOR PLANS

- A. FLOOR PLAN – NORTH RIDGE MS – PLAN 2:
 1. In Vest. A100, on note "Vest. A100 into main campus: Alt. Bid #1: BR-1 on glazing up to 9'-1 3/8"; Alt. Bid #2: BR-2 on glazing up to 9'-1 3/8", revise note to read: "VEST. A100 INTO MAIN CAMPUS: ALT. BID #2: BR-1 ON ALL GLAZING UP TO 9'-1 3/8" AFF; ALT. BID #3: BR-2 ON ALL GLAZING UP TO 9'-1 3/8" AFF".
 2. On existing doors A102A and A103A, and all associated glazing up to 9'-1 3/8" AFF, to have Alternates 2 and 3.
 3. On Storefront AA up to 9'-1 3/8" AFF, to have Alternates 2 and 3.

3.3 SHEET A17.01 – NORTH RIDGE MS DOOR SCHEDULE & DETAILS AND FINISH FLOOR PLAN

- A. STOREFRONT ELEVATIONS – ELEVATION 4:
 1. On Storefront AA, on note "Alternate Bids: Alt. Bid #1: BR-1 on glazing up to 9'-1 3/8"; Alt. Bid #2: BR-2 on glazing up to 9'-1 3/8", revise note to read: "ALTERNATE BIDS: ALT. BID #2: BR-1 ON ALL GLAZING UP TO 9'-1 3/8" AFF; ALT. BID #3: BR-2 ON ALL GLAZING UP TO 9'-1 3/8" AFF".
- B. FINISH FLOOR PLAN – NORTH RIDGE MS – PLAN 10:
 1. In Vest. A100, on note "Remove and replace one row tile at demoed Storefront. Align joints with existing joints", revise note to read: "REMOVE AND REPLACE TWO ROWS OF TILE AT DEMOED STOREFRONT. JOINTS OF ACCENT TILE TO BE OFFSET FROM EXISTING TILE JOINTS."
- C. ROOM FINISH SCHEDULE – NORTH RIDGE MIDDLE SCHOOL:
 1. On VEST. A100, in the Floor column, remove "3H", add "3K"

D. KEY TO MATERIALS:

1. Remove "3H – 12" x 12" Porcelain Tile", and replace with "3K – 24" X 24" PORCELAIN TILE".

E. FLOOR PATTERN LEGEND:

1. Remove "3H – 12" x 12" Porcelain Tile", and replace with "3K – 24" X 24" PORCELAIN TILE".

F. COLOR SCHEDULE:

1. Remove "3H – 12" x 12" Porcelain Accent Tile", and replace with "3K – 24" X 24" PORCELAIN ACCENT TILE".

3.4 SHEET A22.11 – SMITHFIELD MIDDLE SCHOOL FLOOR PLANS

A. FLOOR PLAN – SMITHFIELD MS – PLAN 2:

1. In Recept. B102, on note "Recept. B102 into main campus: Alt. Bid #1: BR-1 on glazing up to 9'-1 3/8"; Alt. Bid #2: BR-2 on glazing up to 9'-1 3/8", revise note to read: "RECEPT. B102 INTO MAIN CAMPUS: ALT. BID #2: BR-1 ON ALL GLAZING UP TO 9'-1 3/8" AFF; ALT. BID #3: BR-2 ON ALL GLAZING UP TO 9'-1 3/8" AFF".
2. On door B102B, and all associated glazing up to 9'-1 3/8" AFF, to have Alternates 2 and 3.
3. On Storefront CA up to 9'-1 3/8" AFF, to have Alternates 2 and 3.

3.5 SHEET A27.01 – SMITHFIELD MS DOOR SCHEDULE & DETAILS & FINISH FLOOR PLAN

A. STOREFRONT ELEVATIONS – ELEVATION 4:

1. On Storefront BB, BC, BD, and BE, add note: "ALTERNATE BIDS: ALT. BID #2: BR-1 ON ALL GLAZING UP TO 9'-1 3/8" AFF; ALT. BID #3: BR-2 ON ALL GLAZING UP TO 9'-1 3/8" AFF".

3.6 SHEET A32.11 – FOSTER VILLAGE ELEMENTARY SCHOOL FLOOR PLANS

A. FLOOR PLAN – FOSTER VILLAGE ES – PLAN 2:

1. In Vest. C100, on note "Vest. C100 into main campus: Alt. Bid #1: BR-1 on glazing up to 9'-1 3/8"; Alt. Bid #2: BR-2 on glazing up to 9'-1 3/8", revise note to read: "VEST. C100 INTO MAIN CAMPUS: ALT. BID #2: BR-1 ON ALL GLAZING UP TO 9'-1 3/8" AFF; ALT. BID #3: BR-2 ON ALL GLAZING UP TO 9'-1 3/8" AFF".
2. On existing door C102A and all associated glazing up to 9'-1 3/8" AFF, to have Alternates 2 and 3.
3. On Storefront CA up to 9'-1 3/8" AFF, to have Alternates 2 and 3.

3.7 SHEET A37.01 – FOSTER VILLAGE ES DOOR SCHEDULE & DETAILS & FINISH FLOOR PLAN

A. STOREFRONT ELEVATIONS – ELEVATION 4:

1. On Storefront CA, add note: "ALTERNATE BIDS: ALT. BID #2: BR-1 ON ALL GLAZING UP TO 9'-1 3/8" AFF; ALT. BID #3: BR-2 ON ALL GLAZING UP TO 9'-1 3/8" AFF".

3.8 SHEET A42.11 – GREEN VALLEY ELEMENTARY SCHOOL FLOOR PLANS

A. FLOOR PLAN – GREEN VALLEY ES – PLAN 2:

1. In Vest. D100, on note "Vest. D100 into main campus: Alt. Bid #1: BR-1 on glazing up to 9'-1 3/8"; Alt. Bid #2: BR-2 on glazing up to 9'-1 3/8", revise note to read: "VEST. D100 INTO MAIN CAMPUS: ALT. BID #2: BR-1 ON ALL GLAZING UP TO 9'-1 3/8" AFF; ALT. BID #3: BR-2 ON ALL GLAZING UP TO 9'-1 3/8" AFF".
2. On door D102A and all associated glazing up to 9'-1 3/8" AFF, to have Alternates 2 and 3.
3. Existing Storefront containing doors D100E, D100F, D100G, and D100H up to 9'-1 3/8" AFF, to have Alternates 2 and 3.

3.9 SHEET A47.01 – GREEN VALLEY ES DOOR SCHEDULE & DETAILS AND FINISH FLOOR PLAN

- A. Delete this sheet in its entirety and insert attached revised sheet.

3.10 SHEET A52.11 – HOLIDAY HEIGHTS ELEMENTARY SCHOOL FLOOR PLANS

A. FLOOR PLAN – HOLIDAY HEIGHTS ES – PLAN 2:

1. In Vest. E100, on note "Vest. E100 into main campus: Alt. Bid #1: BR-1 on glazing up to 9'-1 3/8"; Alt. Bid #2: BR-2 on glazing up to 9'-1 3/8", revise note to read: "VEST. E100 INTO MAIN CAMPUS: ALT.

- BID #2: BR-1 ON ALL GLAZING UP TO 9'-1 3/8" AFF; ALT. BID #3: BR-2 ON ALL GLAZING UP TO 9'-1 3/8" AFF".
2. On doors E102 and E104A and all associated glazing up to 9'-1 3/8" AFF, to have Alternates 2 and 3.
 3. On glazed opening G.O.-E1 up to 9'-1 3/8" AFF, to have Alternates 2 and 3.

3.11 SHEET A57.01 – HOLIDAY HEIGHTS ES DOOR SCHEDULE & DETAILS AND FINISH FLOOR PLAN

A. GLAZED OPENING ELEVATIONS – ELEVATION 4:

1. On Glazed Opening G.O.-E1, on note "Alternate Bids: Alt. Bid #1: BR-1 on glazing up to 9'-1 3/8"; Alt. Bid #2: BR-2 on glazing up to 9'-1 3/8", revise note to read: "ALTERNATE BIDS: ALT. BID #2: BR-1 ON ALL GLAZING UP TO 9'-1 3/8" AFF; ALT. BID #3: BR-2 ON ALL GLAZING UP TO 9'-1 3/8" AFF".

3.12 SHEET A62.11 – ALLIENE MULLENDORE ELEMENTARY SCHOOL FLOOR PLANS

A. FLOOR PLAN – ALLIENE MULLENDORE ES – PLAN 2:

1. In Vest. F100, on note "Vest. F100 into main campus: Alt. Bid #1: BR-1 on glazing up to 9'-1 3/8"; Alt. Bid #2: BR-2 on glazing up to 9'-1 3/8", revise note to read: "VEST. F100 INTO MAIN CAMPUS: ALT. BID #2: BR-1 ON ALL GLAZING UP TO 9'-1 3/8" AFF; ALT. BID #3: BR-2 ON ALL GLAZING UP TO 9'-1 3/8" AFF".
2. On existing door F102 and all associated glazing up to 9'-1 3/8" AFF, to have Alternates 2 and 3.
3. On glazed opening G.O.-F1 up to 9'-1 3/8" AFF, to have Alternates 2 and 3.

3.13 SHEET A67.01 – ALLIENE MULLENDORE ES DOOR SCHEDULE & DETAILS AND FINISH FLOOR PLAN

A. GLAZED OPENING ELEVATIONS – ELEVATION 4:

1. On Glazed Opening G.O.-F1, on note "Alternate Bids: Alt. Bid #1: BR-1 on glazing up to 9'-1 3/8"; Alt. Bid #2: BR-2 on glazing up to 9'-1 3/8", revise note to read: "ALTERNATE BIDS: ALT. BID #2: BR-1 ON ALL GLAZING UP TO 9'-1 3/8" AFF; ALT. BID #3: BR-2 ON ALL GLAZING UP TO 9'-1 3/8" AFF".

3.14 SHEET A72.11 – NORTH RIDGE ELEMENTARY SCHOOL FLOOR PLANS

A. DEMO FLOOR PLAN – NORTH RIDGE ES – PLAN 1:

1. In Toilet G105, remove existing wall covering in entire room & prepare wall for new ceramic wall tile.

B. FLOOR PLAN – NORTH RIDGE ES – PLAN 2:

1. In Vest. G100, on note "Vest. G100 into main campus: Alt. Bid #1: BR-1 on glazing up to 9'-1 3/8"; Alt. Bid #2: BR-2 on glazing up to 9'-1 3/8", revise note to read: "VEST. G100 INTO MAIN CAMPUS: ALT. BID #2: BR-1 ON ALL GLAZING UP TO 9'-1 3/8" AFF; ALT. BID #3: BR-2 ON ALL GLAZING UP TO 9'-1 3/8" AFF".
2. On door G103A, in glazed opening G.O.-G1, and all associated glazing up to 9'-1 3/8" AFF, to have Alternates 2 and 3.
3. On existing Storefront containing doors G100E, G100F, G100G, and G100H up to 9'-1 3/8" AFF, to have Alternates 2 and 3.

3.15 SHEET A77.01 – NORTH RIDGE ES DOOR SCHEDULE & DETAILS AND FINISH FLOOR PLAN

- #### A. Delete this sheet in its entirety and insert attached revised sheet.

3.16 SHEET A82.11 – SNOW HEIGHTS ELEMENTARY SCHOOL FLOOR PLANS

A. FLOOR PLAN – SNOW HEIGHTS ES – PLAN 2:

1. In Vest. H100, on note "Vest. H100 into main campus: Alt. Bid #1: BR-1 on glazing up to 9'-1 3/8"; Alt. Bid #2: BR-2 on glazing up to 9'-1 3/8", revise note to read: "VEST. H100 INTO MAIN CAMPUS: ALT. BID #2: BR-1 ON ALL GLAZING UP TO 9'-1 3/8" AFF; ALT. BID #3: BR-2 ON ALL GLAZING UP TO 9'-1 3/8" AFF".
2. On existing glazed opening at existing door H102 and all associated glazing up to 9'-1 3/8" AFF, to have Alternates 2 and 3.
3. On glazed openings G.O.-H1 and G.O.-H2, up to 9'-1 3/8" AFF, to have Alternates 2 and 3.

3.17 SHEET A87.01 – SNOW HEIGHTS ES DOOR SCHEDULE & DETAILS AND FINISH FLOOR PLAN

A. GLAZED OPENING ELEVATIONS – ELEVATION 4:

1. On Glazed Openings G.O.-H1 and G.O.-H2, on note "Alternate Bids: Alt. Bid #1: BR-1 on glazing up to 9'-1 3/8"; Alt. Bid #2: BR-2 on glazing up to 9'-1 3/8", revise note to read: "ALTERNATE BIDS: ALT. BID #2: BR-1 ON ALL GLAZING UP TO 9'-1 3/8" AFF; ALT. BID #3: BR-2 ON ALL GLAZING UP TO 9'-1 3/8" AFF".

3.18 SHEET A92.11 – CARRIE FRANCIS THOMAS ELEMENTARY SCHOOL FLOOR PLANS

A. DEMO FLOOR PLAN – C.F. THOMAS ES – PLAN 1:

1. In Toilet J105, remove existing wall covering in entire room & prepare wall for new ceramic wall tile.

B. FLOOR PLAN – C.F. THOMAS ES – PLAN 2:

1. In Vest. J100, on note "Vest. J100 into main campus: Alt. Bid #1: BR-1 on glazing up to 9'-1 3/8"; Alt. Bid #2: BR-2 on glazing up to 9'-1 3/8", revise note to read: "VEST. J100 INTO MAIN CAMPUS: ALT. BID #2: BR-1 ON ALL GLAZING UP TO 9'-1 3/8" AFF; ALT. BID #3: BR-2 ON ALL GLAZING UP TO 9'-1 3/8" AFF".
2. On door J103A, in glazed opening G.O.-J1, and all associated glazing up to 9'-1 3/8" AFF, to have Alternates 2 and 3.
3. On existing Storefront containing doors J100E, J100F, J100G, and J100H up to 9'-1 3/8" AFF, to have Alternates 2 and 3.

3.19 SHEET A97.01 – CARRIE FRANCIS THOMAS ES DOOR SCHEDULE & DETAILS AND FINISH FLOOR PLAN

- #### **A. Delete this sheet in its entirety and insert attached revised sheet.**

3.20 SHEET A102.11 – NORTH OAKS MIDDLE SCHOOL FLOOR PLANS

A. FLOOR PLAN – NORTH OAKS MS – PLAN 2:

1. In Vest. K100, on note "Vest. K100 into main campus: Alt. Bid #1: BR-1 on glazing up to 9'-1 3/8"; Alt. Bid #2: BR-2 on glazing up to 9'-1 3/8", revise note to read: "VEST. K100 INTO MAIN CAMPUS: ALT. BID #2: BR-1 ON ALL GLAZING UP TO 9'-1 3/8" AFF; ALT. BID #3: BR-2 ON ALL GLAZING UP TO 9'-1 3/8" AFF".
2. On existing doors K101A, K101B, and K101C and all associated glazing up to 9'-1 3/8" AFF, to have Alternates 2 and 3.
3. On Storefront KA up to 9'-1 3/8" AFF, to have Alternates 2 and 3.
4. On existing Glazed Opening containing K103A up to 9'-1 3/8" AFF, to have Alternates 2 and 3

3.21 SHEET A107.01 – NORTH OAK MS DOOR SCHEDULE & DETAILS & FINISH FLOOR PLAN

A. STOREFRONT ELEVATIONS – ELEVATION 4:

1. On Storefront KA, on note "Alternate Bids: Alt. Bid #1: BR-1 on glazing up to 9'-1 3/8"; Alt. Bid #2: BR-2 on glazing up to 9'-1 3/8", revise note to read: "ALTERNATE BIDS: ALT. BID #2: BR-1 ON ALL GLAZING UP TO 9'-1 3/8" AFF; ALT. BID #3: BR-2 ON ALL GLAZING UP TO 9'-1 3/8" AFF".

3.22 SHEET A112.11 – W.T. FRANCISCO ELEMENTARY SCHOOL FLOOR PLANS

A. FLOOR PLAN – W.T. FRANCISCO ES – PLAN 2:

1. In Vest. L100, on note "Vest. L100 into main campus: Alt. Bid #1: BR-1 on glazing up to 9'-1 3/8"; Alt. Bid #2: BR-2 on glazing up to 9'-1 3/8", revise note to read: "VEST. L100 INTO MAIN CAMPUS: ALT. BID #2: BR-1 ON ALL GLAZING UP TO 9'-1 3/8" AFF; ALT. BID #3: BR-2 ON ALL GLAZING UP TO 9'-1 3/8" AFF".
2. On existing glazed opening at existing door L102 and all associated glazing up to 9'-1 3/8" AFF, to have Alternates 2 and 3.
3. On glazed openings G.O.-L1 and G.O.-L2, up to 9'-1 3/8" AFF, to have Alternates 2 and 3.

3.23 SHEET A117.01 – W.T. FRANCISCO ES DOOR SCHEDULE & DETAILS AND FINISH FLOOR PLAN

A. GLAZED OPENING ELEVATIONS – ELEVATION 4:

1. On Glazed Openings G.O.-L1 and G.O.-L2, add note: "ALTERNATE BIDS: ALT. BID #2: BR-1 ON ALL GLAZING UP TO 9'-1 3/8" AFF; ALT. BID #3: BR-2 ON ALL GLAZING UP TO 9'-1 3/8" AFF".

3.24 SHEET A122.11 – JOHN D. SPICER ELEMENTARY SCHOOL FLOOR PLANS

- A. DEMO FLOOR PLAN – JOHN D. SPICER ES – PLAN 1:
1. In Toilet M105, remove existing wall covering in entire room & prepare wall for new ceramic wall tile.
- B. FLOOR PLAN – JOHN D. SPICER ES – PLAN 2:
1. In Vest. M100, on note “Vest. M100 into main campus: Alt. Bid #1: BR-1 on glazing up to 9’-1 3/8””; Alt. Bid #2: BR-2 on glazing up to 9’-1 3/8””, revise note to read: “VEST. M100 INTO MAIN CAMPUS: ALT. BID #2: BR-1 ON ALL GLAZING UP TO 9’-1 3/8” AFF; ALT. BID #3: BR-2 ON ALL GLAZING UP TO 9’-1 3/8” AFF”.
 2. On door M103A, in glazed opening G.O.-M1, and associated glazing up to 9’-1 3/8” AFF, to have Alternates 2 and 3.
 3. On existing Storefront containing doors M100E, M100F, M100G, and M100H up to 9’-1 3/8” AFF, to have Alternates 2 and 3.

3.25 SHEET A127.01 – JOHN D. SPICER ES DOOR SCHEDULE & DETAILS AND FINISH FLOOR PLAN

- A. Delete this sheet in its entirety and insert attached revised sheet.

3.26 SHEET A132.11 – W.A. PORTER ELEMENTARY SCHOOL FLOOR PLANS

- A. FLOOR PLAN – W.A. PORTER ES – PLAN 2:
1. In Vest. N100, on note “Vest. N100 into main campus: Alt. Bid #1: BR-1 on glazing up to 9’-1 3/8””; Alt. Bid #2: BR-2 on glazing up to 9’-1 3/8””, revise note to read: “VEST. N100 INTO MAIN CAMPUS: ALT. BID #2: BR-1 ON ALL GLAZING UP TO 9’-1 3/8” AFF; ALT. BID #3: BR-2 ON ALL GLAZING UP TO 9’-1 3/8” AFF”.
 2. On Storefront NA and NB up to 9’-1 3/8” AFF, to have Alternates 2 and 3.

3.27 SHEET A137.01 – W.A. PORTER ES DOOR SCHEDULE & DETAILS AND FINISH FLOOR PLAN

- A. Delete this sheet in its entirety and insert attached revised sheet.

3.28 SHEET A142.11 – WATAUGA MIDDLE SCHOOL FLOOR PLANS

- A. FLOOR PLAN – WATAUGA OAKS MS – PLAN 2:
1. In Vest. P100, on note “Vest. P100 into main campus: Alt. Bid #1: BR-1 on glazing up to 9’-1 3/8””; Alt. Bid #2: BR-2 on glazing up to 9’-1 3/8””, revise note to read: “VEST. P100 INTO MAIN CAMPUS: ALT. BID #2: BR-1 ON ALL GLAZING UP TO 9’-1 3/8” AFF; ALT. BID #3: BR-2 ON ALL GLAZING UP TO 9’-1 3/8” AFF”.
 2. On existing doors P101A, P101B, and P101C and all associated glazing up to 9’-1 3/8” AFF, to have Alternates 2 and 3.
 3. On Storefront PA up to 9’-1 3/8” AFF, to have Alternates 2 and 3.
 4. On existing Glazed Opening containing P103A up to 9’-1 3/8” AFF, to have Alternates 2 and 3

3.29 SHEET A147.01 – WATAUGA MS DOOR SCHEDULE & DETAILS AND FINISH FLOOR PLAN

- A. STOREFRONT ELEVATIONS – ELEVATION 4:
1. On Storefront PA, on note “Alternate Bids: Alt. Bid #1: BR-1 on glazing up to 9’-1 3/8””; Alt. Bid #2: BR-2 on glazing up to 9’-1 3/8””, revise note to read: “ALTERNATE BIDS: ALT. BID #2: BR-1 ON ALL GLAZING UP TO 9’-1 3/8” AFF; ALT. BID #3: BR-2 ON ALL GLAZING UP TO 9’-1 3/8” AFF”.

3.30 SHEET A152.11 – GRACE E. HARDEMAN ELEMENTARY SCHOOL FLOOR PLANS

- A. FLOOR PLAN – GRACE HARDEMAN ES – PLAN 2:
1. In Vest. Q100 and Lobby Q101, on note “Vest. Q100 and Lobby Q101 into main campus: Alt. Bid #1: BR-1 on glazing up to 9’-1 3/8””; Alt. Bid #2: BR-2 on glazing up to 9’-1 3/8””, revise note to read: “VEST. Q100 AND LOBBY Q101 INTO MAIN CAMPUS: ALT. BID #2: BR-1 ON ALL GLAZING UP TO 9’-1 3/8” AFF; ALT. BID #3: BR-2 ON ALL GLAZING UP TO 9’-1 3/8” AFF”.
 2. On existing door Q102A and associated glazing up to 9’-1 3/8” AFF, to have Alternates 2 and 3.
 3. On Storefront QA up to 9’-1 3/8” AFF, to have Alternates 2 and 3.

3.31 SHEET A157.01 – GRACE E. HARDEMAN ES DOOR SCHEDULE & DETAILS AND FINISH FLOOR PLAN

A. STOREFRONT ELEVATIONS – ELEVATION 4:

1. On Storefront QA, add note: "ALTERNATE BIDS: ALT. BID #2: BR-1 ON ALL GLAZING UP TO 9'-1 3/8" AFF; ALT. BID #3: BR-2 ON ALL GLAZING UP TO 9'-1 3/8" AFF".

3.32 SHEET P12.11 – NORTH RIDGE MIDDLE SCHOOL – PLUMBING PLAN

- A. Delete this sheet in its entirety.

3.33 SHEET E42.31 – GREEN VALLEY ELEMENTARY – LIGHTING PLAN

- A. At Pull Out Space D115, delete the two low voltage light switches indicated across from each other at the plan west side of the room.

3.34 SHEET E62.11 – GREEN VALLEY ELEMENTARY – ELECTRICAL PLAN

- A. At Reception F102, delete note by symbol number 5, indicated at the junction box. Replace with note by symbol number 4.

3.35 SHEET E102.11 – NORTH OAKS MIDDLE SCHOOL – ELECTRICAL PLAN

- A. Delete the card reader and note by symbol number 5 indicated at the Auditorium entry doors.

3.36 SHEET E132.21 – W.A, PORTER ELEMENTARY SCHOOL – ELECTRICAL PLAN

- A. Delete this sheet in its entirety and insert attached revised sheet.

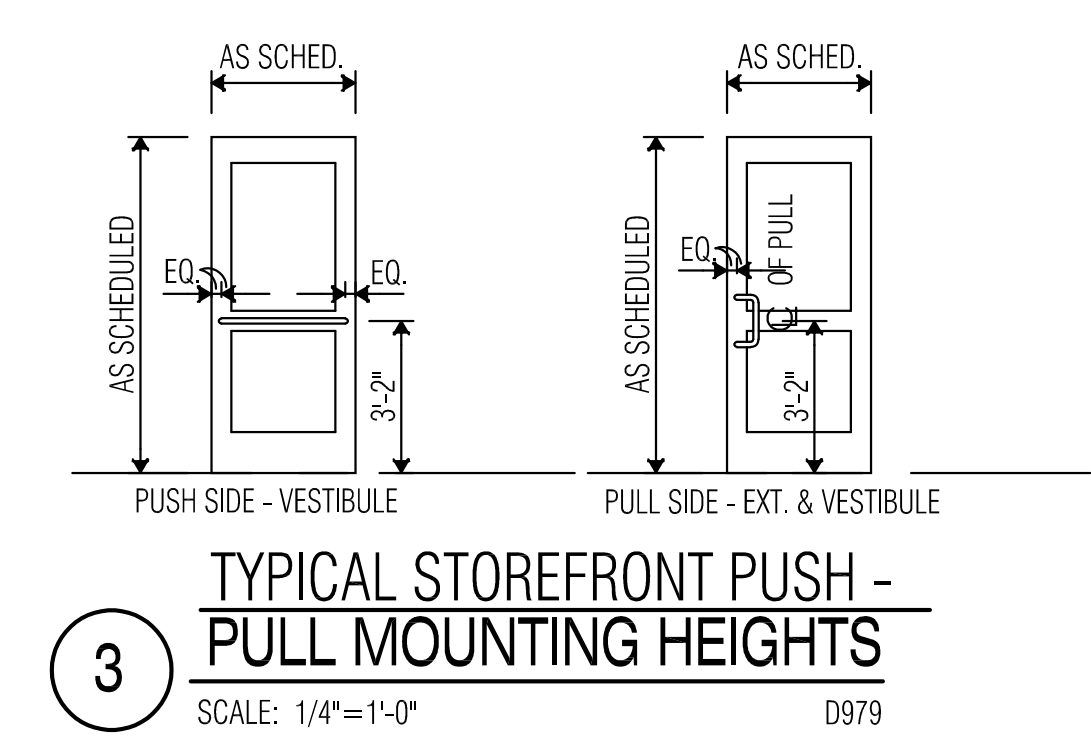
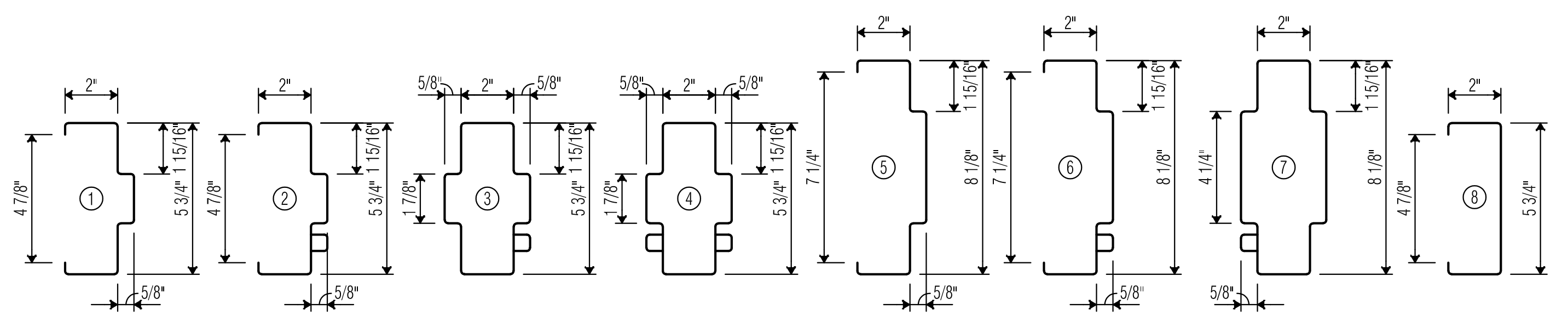
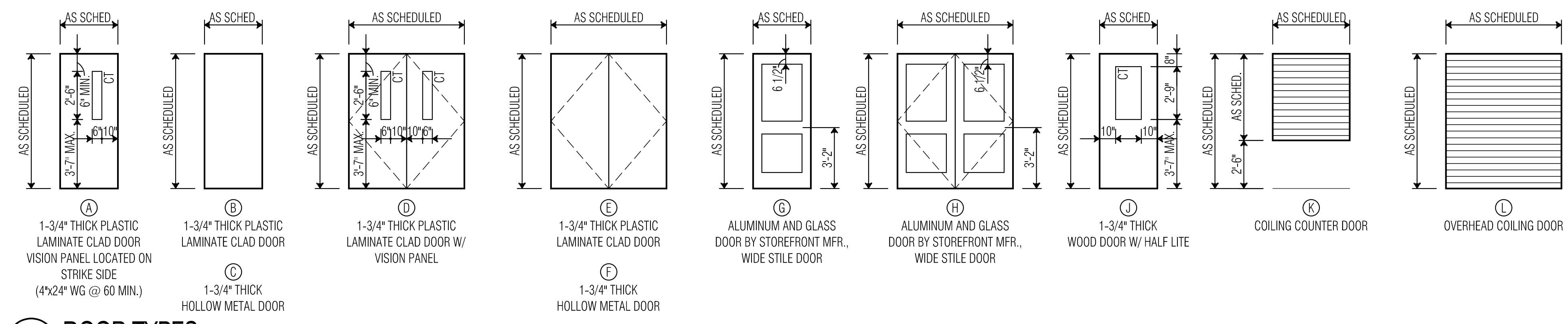
3.37 SHEET E142.11 – WATAUGA MIDDLE SCHOOL – ELECTRICAL PLAN

- A. Delete the card reader and note by symbol number 5 indicated at the Auditorium entry doors.

3.38 REVISED DRAWINGS

- A. Sheets No. A47.01, A77.01, A97.01, A127.01, A137.01, and E132.21, dated February 28, 2019 and attached hereto, are revised drawings and are hereby made a part of this addendum.

END OF ADDENDUM NO. 3



DOOR SCHEDULE - GREEN VALLEY ELEMENTARY SCHOOL

DOOR NUMBER	DOOR TYPE	FRAME TYPE	DOOR OPENING WIDTH	DOOR OPENING HEIGHT	DETAIL	FIRE RATING	HRDWR SET	REMARKS
D100A	EX ALUMEX ALUM	3'-0" F.V.	7'-0" F.V.	EXIST. CLR. ANODIZED STOREFRONT	---	---	---	
D100B	EX ALUMEX ALUM	3'-0" F.V.	7'-0" F.V.	EXIST. CLR. ANODIZED STOREFRONT	---	---	---	
D100C	EX ALUMEX ALUM	3'-0" F.V.	7'-0" F.V.	EXIST. CLR. ANODIZED STOREFRONT	---	---	---	
D100D	EX ALUMEX ALUM	3'-0" F.V.	7'-0" F.V.	EXIST. CLR. ANODIZED STOREFRONT	---	---	---	
D100E	EX ALUMEX ALUM	3'-0" F.V.	7'-0" F.V.	EXIST. CLR. ANODIZED STOREFRONT	---	---	---	
D100F	EX ALUMEX ALUM	3'-0" F.V.	7'-0" F.V.	EXIST. CLR. ANODIZED STOREFRONT	---	---	---	
D100G	EX ALUMEX ALUM	3'-0" F.V.	7'-0" F.V.	EXIST. CLR. ANODIZED STOREFRONT	---	---	---	
D100H	EX ALUMEX ALUM	3'-0" F.V.	7'-0" F.V.	EXIST. CLR. ANODIZED STOREFRONT	---	---	---	NOTES 3, 5
D102A	J	HM	3'-0"	7'-0"	---	---	---	*MATCH EXISTING WALL FIRE RATING
D102B	J	HM	3'-0"	7'-0"	---	---	---	NOTES 3, 4; *MATCH EXISTING WALL FIRE RATING
D103	A	HM	3'-0"	7'-0"	---	---	---	
D115	A	HM	3'-0"	7'-0"	---	---	---	

DOOR SCHEDULE NOTES

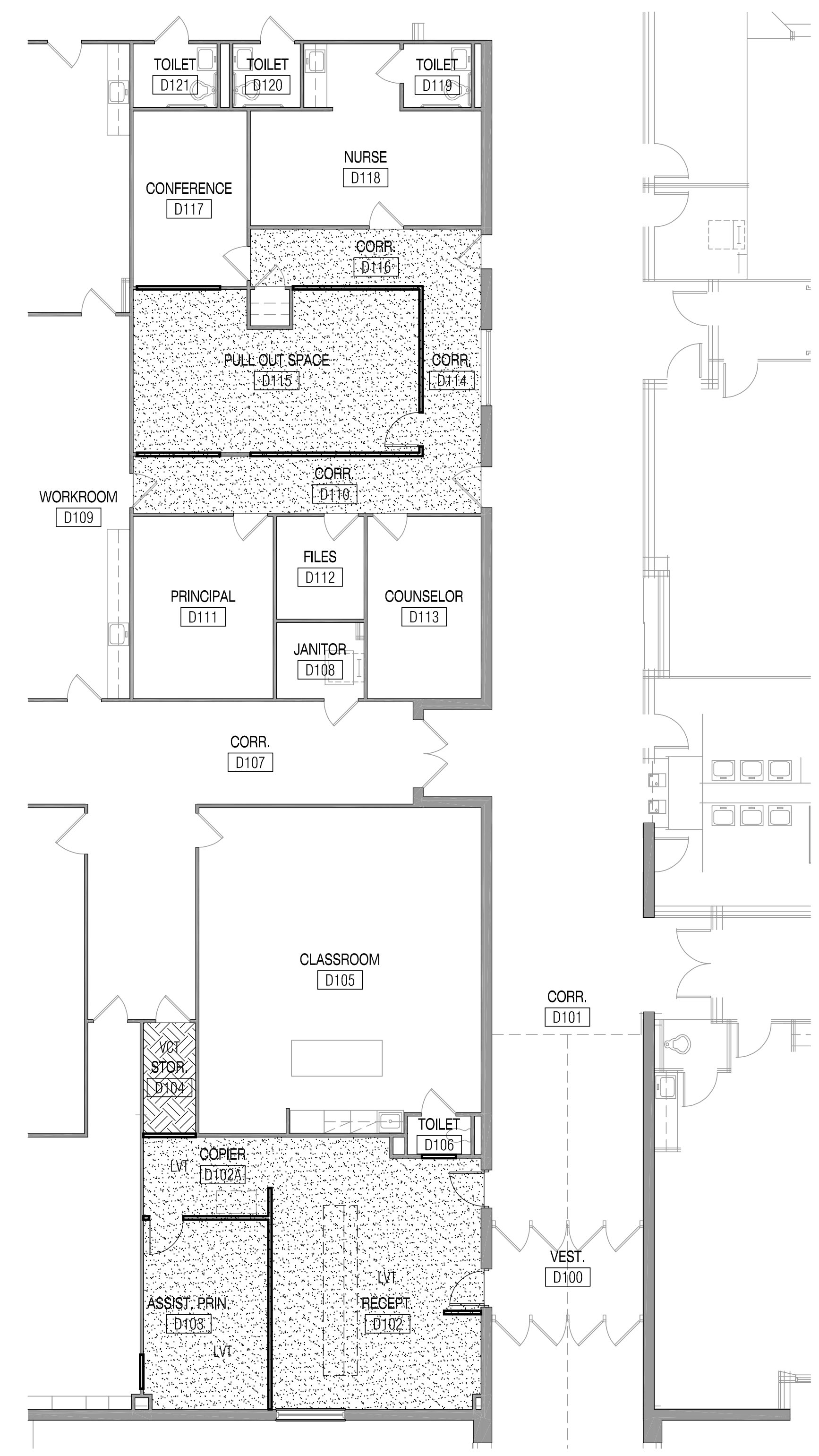
- POSITIONING SENSORS
- ELECTRO-MECHANICAL PANIC BAR
- CARD READER
- DOOR RELEASE FROM RECEPTION DESK
- EXISTING DOOR, EXISTING FRAME, NEW HARDWARE
- EXISTING FRAME, NEW DOOR, NEW HARDWARE
- CHANGE DOOR SWING TO PREVENT DOOR FROM SWINGING BOTH DIRECTIONS
- CHANGE SWING OF DOOR
- WEATHERSTRIPPING ALL SIDES
- REMOVABLE MULLION

GENERAL STOREFRONT NOTES

- DASHED MEMBERS SHALL BE KAWNEER 500 HEAVY WALL OR APPROVED EQUAL. TYPICAL AT ALL DOOR JAMBS.
- FIELD VERIFY ALL DIMENSIONS PRIOR TO FABRICATION OF STOREFRONT/CURTAIN WALL.
- REF. DETAIL 3 THIS SHEET FOR TYP. PUSH/PULL MOUNTING HEIGHTS AT ALL STOREFRONT DOORS.

GLASS LEGEND

TT	1" THICK TINTED TEMPERED INSULATING GLASS
TT4	1/4" THICK TINTED TEMPERED GLASS
CT	1" THICK CLEAR TEMPERED INSULATING GLASS
CT4	1/4" THICK CLEAR TEMPERED GLASS
SP	1" THICK INSULATING SPANDREL GLASS PANEL
FT	1" THICK FROSTED TEMPERED INSULATING GLASS
BR-1	1/2" THICK CLEAR LAMINATED SAFETY GLASS (LEVEL IIA PRODUCTS)
BR-2	1 9/16" THICK GLASS-CLAD POLYCARBONATE AND CONTAINS CONTAINS AN EXPOSED POLYCARBONATE SURFACE WITH AN ABRASION RESISTANT COATING ON THE WITNESS (SAFE) SIDE (LEVEL IIA PRODUCTS)



ROOM FINISH SCHEDULE - GREEN VALLEY ELEMENTARY SCHOOL

ROOM NUMBER	ROOM NAME	FLOOR	BASE	WALLS				CEILING	REMARKS
				NORTH	EAST	SOUTH	WEST		
D100	VEST.	EX	EX	---	4EX	---	4EX	EX	
D101	CORR.	EX	4EX	---	4EX	---	4EX	EX	
D102	RECEPT.	15F	14B	20A	20A	20A	20A	22A	
D102A	COPIER	15F	14B	20A	20A	20A	20A	22A	
D103	ASSIST. PRIN.	15F	14B	20A	20A	20A	20A	22A	
D104	STOR.	15F	14B	20A	20A	20A	20A	22A	
D105	CLASSROOM	EX	EX	EX	EX	EX	EX	EX	
D106	TOILET	EX	EX	EX	EX	20A/20EX	EX	EX	
D107	CORR.	EX	EX	EX	EX	EX	EX	EX	
D108	JANITOR	EX	EX	EX	EX	EX	EX	EX	
D109	WORKROOM	EX	EX	EX	EX	EX	EX	EX	
D110	CORR.	15F	14B	20A	20A	20A	20A	22A	
D111	PRINCIPAL	EX	EX	EX	EX	EX	EX	EX	
D112	FILES	EX	EX	EX	EX	EX	EX	EX	
D113	COUNSELOR	EX	EX	EX	EX	EX	EX	EX	
D114	CORR.	15F	14B	20A	20A	20A	20A	22A	
D115	PULL OUT SPACE	15F	14B	20A	20A	20A	20A	22A	
D116	CORR.	15F	14B	20A	20A	20A	20A	22A	
D117	CONFERENCE	EX	EX	EX	EX	EX	EX	EX	
D118	NURSE	EX	EX	EX	EX	EX	EX	EX	
D119	TOILET	EX	EX	EX	EX	EX	EX	EX	
D120	TOILET	EX	EX	EX	EX	EX	EX	EX	
D121	TOILET	EX	EX	EX	EX	EX	EX	EX	

KEY TO MATERIALS

3E	8" X 8" GLAZED CERAMIC TILE	---	---
3EX	EXISTING 8" X 8" GLAZED CERAMIC TILE	20A	GYPSUM WALLBOARD - PAINT
---	---	20EX	EXISTING GYPSUM WALLBOARD - PAINT
14B	RUBBER BASE - COVE	---	---
14BEX	EXISTING RUBBER BASE - COVE	22A	2" X 2" ACOUSTIC LAY-IN PANELS
---	---	22EX	EXISTING LAY-IN PANELS IN EXISTING GRID
15A	VINYL COMPOSITION TILE	---	---
15F	LUXURY VINYL TILE	EX	EXISTING FINISH TO REMAIN
15EX	EXISTING VINYL COMPOSITION TILE	---	---

FLOOR PATTERN LEGEND

△	ACCENT VCT - 15A
■	LVT - 15F

COLOR SCHEDULE

- 14B1 - ROPPE COLOR AS SELECTED BY ARCHITECT.
14B2 - BASE TO MATCH EXISTING IN ROOM.
- 15A - AS SELECTED BY ARCHITECT.
15F - AS SELECTED BY ARCHITECT.
- P1 - BENJAMIN MOORE VANILLA MILKSHAKE OC-S9, IN RECEPT, B102.
P2 - PAINT TO MATCH EXISTING PAINTED GYPSUM WALLBOARD IN EXISTING ROOMS.
P3 - PAINT TO MATCH EXISTING PAINTED GYPSUM BOARD CEILING.
- NOTE: REPAIR ALL EXISTING FINISHES DAMAGED DURING CONSTRUCTION. NEW FINISHES SHALL MATCH EXISTING.

VLK ARCHITECTS

ARCHITECT

VLK Architects, Inc.
2821 West 7th Street, Suite 300
Fort Worth, Texas 76107
Main Phone: 817.633.1600
www.vlkarchitects.com

BIRDVILLE ISD
NORTH RICHLAND HILLS, HALTOM CITY, HURST, AND WATAUGA, TEXAS

Controlled Entry at 15 Campuses

ISSUED: FEBRUARY 14, 2019

REVISIONS

Revision No.	Date	Description
1	Feb. 28, 2019	Addendum No. 3

Director: JFK
Designer: VLK
Proj. Coord.: VLK
DJM

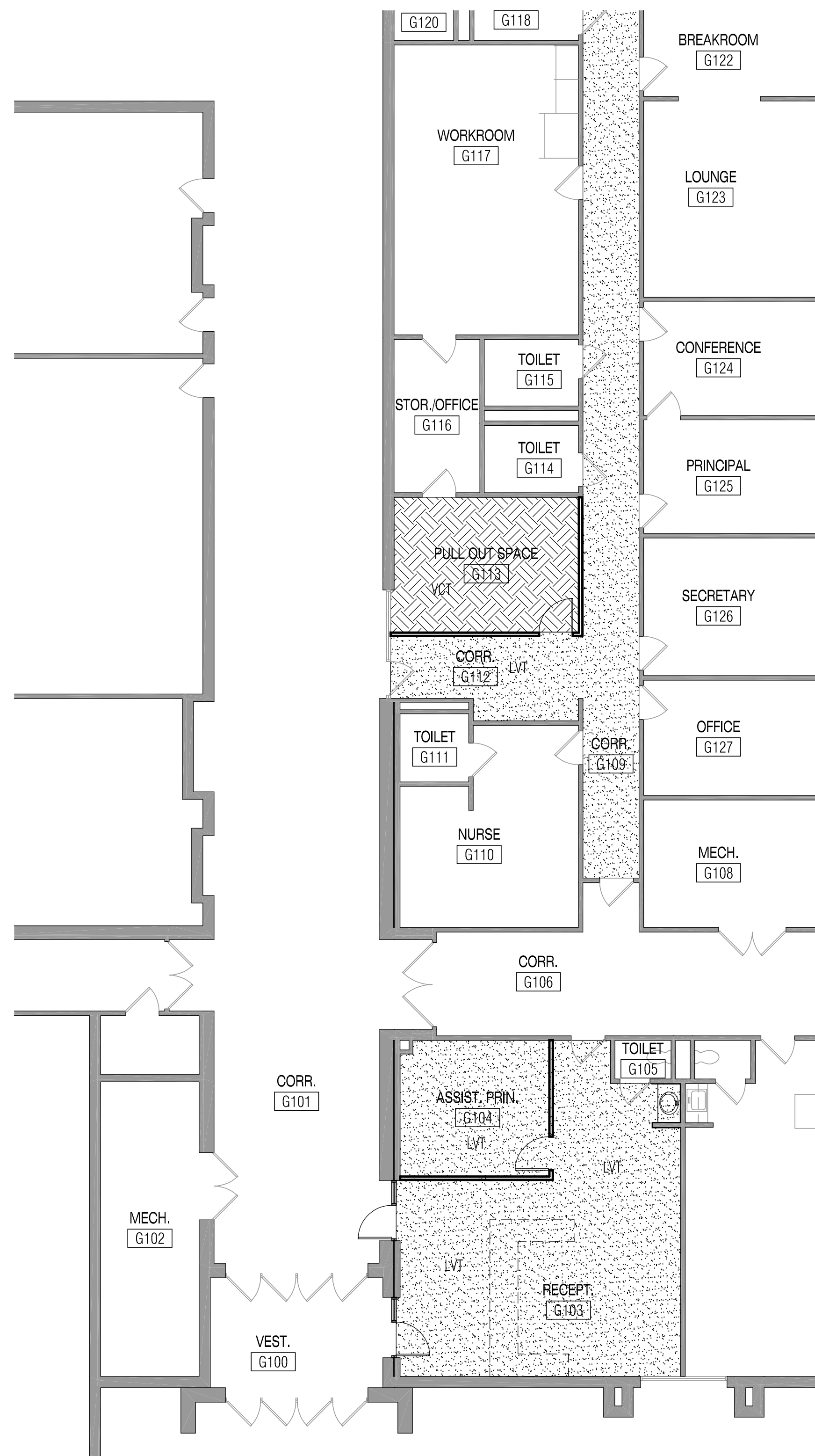
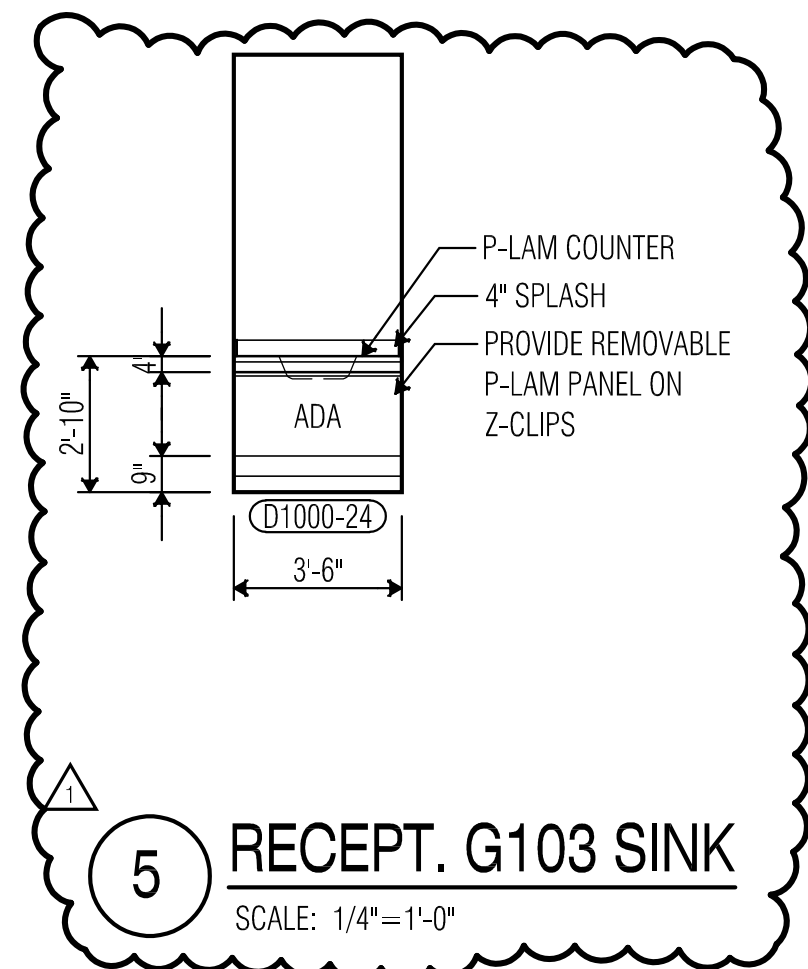
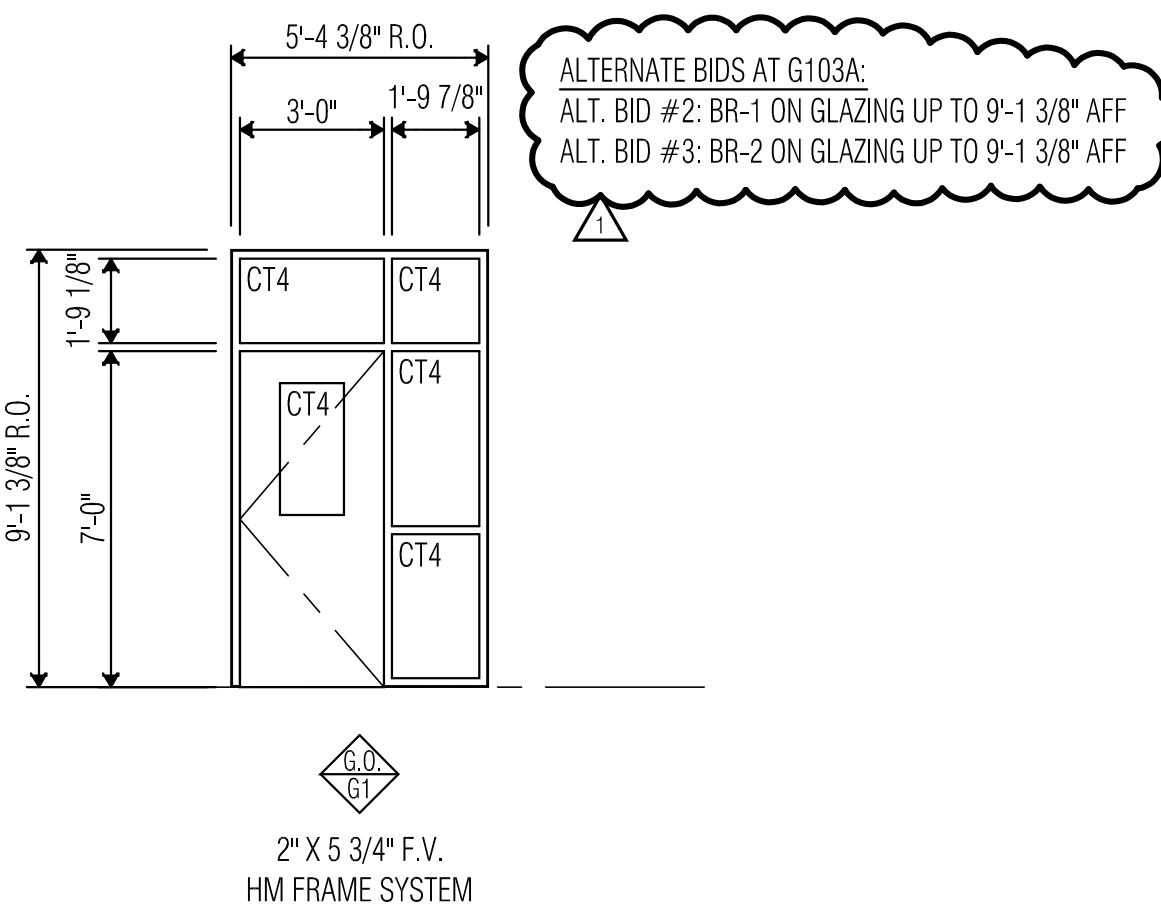
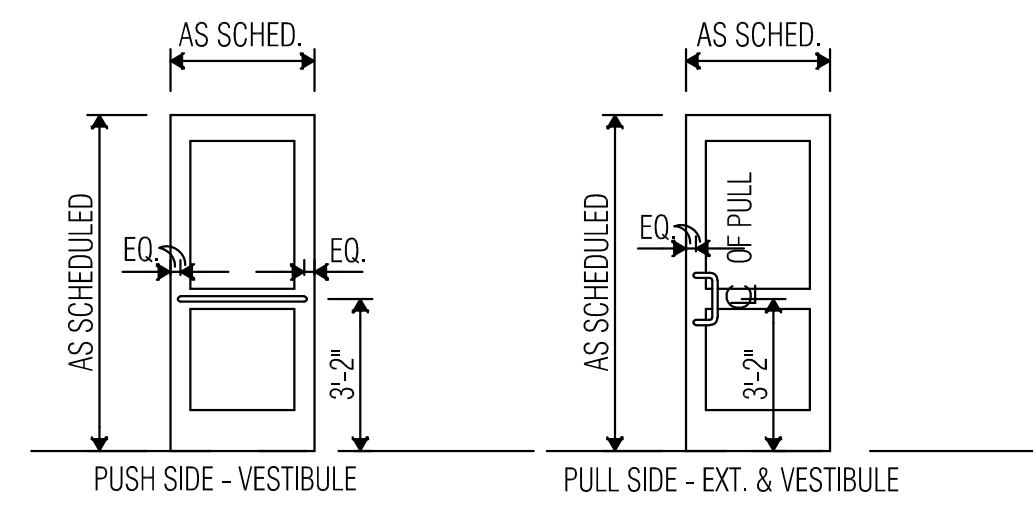
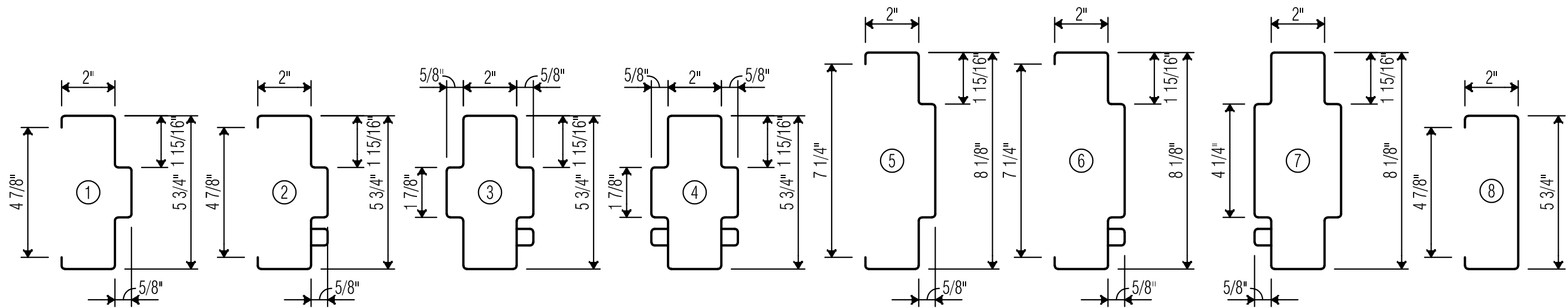
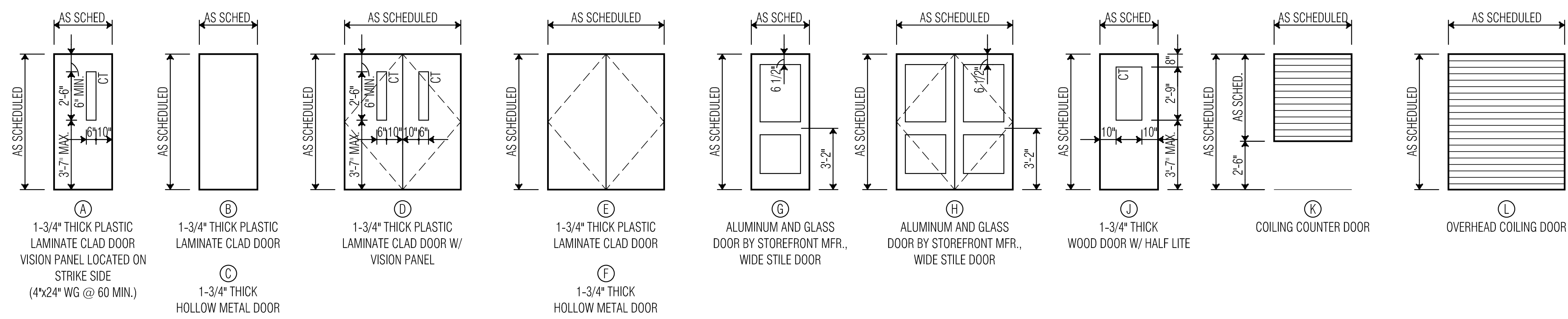
Drawn By: VLK
Quality Control: VLK

PROJECT NO.
1886.00

SHEET TITLE
**GREEN VALLEY ES
DOOR SCHEDULE & DETAILS
AND FINISH FLOOR PLAN**

SHEET NO.
A47.01

COPYRIGHT © 2019 VLK ARCHITECTS



DOOR SCHEDULE - NORTH RIDGE ELEMENTARY SCHOOL

DOOR NUMBER	DOOR TYPE	FRAME TYPE	DOOR OPENING WIDTH	DOOR OPENING HEIGHT	DETAIL	FIRE RATING	HRDWR SET	REMARKS
G100A	EX	ALUMEX ALUM	3'-0"	7'-0"	F.V.	---	---	EXIST. DARK BRONZE STOREFRONT
G100B	EX	ALUMEX ALUM	3'-0"	7'-0"	F.V.	---	---	EXIST. DARK BRONZE STOREFRONT
G100C	EX	ALUMEX ALUM	3'-0"	7'-0"	F.V.	---	---	EXIST. DARK BRONZE STOREFRONT
G100D	EX	ALUMEX ALUM	3'-0"	7'-0"	F.V.	---	---	EXIST. DARK BRONZE STOREFRONT
G100E	EX	ALUMEX ALUM	3'-0"	7'-0"	F.V.	---	---	EXIST. DARK BRONZE STOREFRONT
G100F	EX	ALUMEX ALUM	3'-0"	7'-0"	F.V.	---	---	EXIST. DARK BRONZE STOREFRONT
G100G	EX	ALUMEX ALUM	3'-0"	7'-0"	F.V.	---	---	EXIST. DARK BRONZE STOREFRONT
G100H	EX	ALUMEX ALUM	3'-0"	7'-0"	F.V.	---	---	EXIST. DARK BRONZE STOREFRONT
G102	EX	HM	6'-0"	7'-0"	F.V.	---	---	---
G103A	J	HM	3'-0"	7'-0"	REF. GLAZED OPENING GO-G1	1"90 MIN.	---	*MATCH EXISTING WALL FIRE RATING
G103B	J	HM	3'-0"	7'-0"	REF. GLAZED OPENING GO-G1	1"90 MIN.	---	NOTES 3.4 *MATCH EXISTING WALL FIRE RATING
G103C	EX	WD	EX	HM	3'-0"	7'-0"	---	NOTES 3.5
G104	A	HM	3'-0"	7'-0"	---	---	---	---
G113	A	HM	3'-0"	7'-0"	---	---	---	---

DOOR SCHEDULE NOTES

- POSITIONING SENSORS
- ELECTRO-MECHANICAL PANIC BAR
- CARD READER
- DOOR RELEASE FROM RECEPTION DESK
- EXISTING DOOR, EXISTING FRAME, NEW HARDWARE
- EXISTING FRAME, NEW DOOR, NEW HARDWARE
- CHANGE DOOR SWING TO PREVENT DOOR FROM SWINGING BOTH DIRECTIONS
- CHANGE SWING OF DOOR
- WEATHERSTRIPPING ALL SIDES
- REMOVABLE MULLION

GENERAL STOREFRONT NOTES

- DASHED MEMBERS SHALL BE KAWNEER '500 HEAVY WALL' OR APPROVED EQUAL, TYPICAL AT ALL DOOR JAMBS.
- FIELD VERIFY ALL DIMENSIONS PRIOR TO FABRICATION
- REF. DETAIL 3 THIS SHEET FOR TYP. PUSH/PULL MOUNTING HEIGHTS AT ALL STOREFRONT DOORS.

GLASS LEGEND

TT	1" THICK TINTED TEMPERED INSULATING GLASS
TT4	1/4" THICK TINTED TEMPERED GLASS
CT	1" THICK CLEAR TEMPERED INSULATING GLASS
CT4	1/4" THICK CLEAR TEMPERED GLASS
SP	1" THICK INSULATING SPANDEL GLASS PANEL
FT	1" THICK FROSTED TEMPERED INSULATING GLASS
BR-1	1/2" THICK CLEAR LAMINATED SAFETY GLASS (LEVEL IIA PRODUCTS)
BR-2	1 9/16" THICK GLASS-CLAD POLYCARBONATE AND CONTAINS AN ABRASION RESISTANT COATING ON THE WITNESS (SAFE) SIDE (LEVEL IIA PRODUCTS)

ROOM FINISH SCHEDULE - NORTH RIDGE ELEMENTARY SCHOOL

ROOM NUMBER	ROOM NAME	FLOOR	BASE	WALLS			CEILING	REMARKS
				NORTH	EAST	WEST		
G100	VEST.	EX	EX	---	EX	---	EX	
G101	CORR.	EX	EX	---	EX	---	EX	
G102	MECH.	EX	EX	EX	EX	EX	EX	
G103	RECEPT.	15F	14B	20A/20EX	3N*/20A/20EX	20EX	22A	* AT HAND SINK ALCOVE
G104	ASSIST. PRIN.	15F	14B	20EX	20A	20A	20EX	22A
G105	TOILET	EX	EX	3N	3N	3N	20EX	
G106	CORR.	EX	EX	EX	EX	EX	EX	
G109	CORR.	15F	14B/14EX	20A/20EX	20EX	20EX	20A/20EX	22EX
G110	NURSE	EX	EX	EX	EX	EX	EX	
G111	TOILET	EX	EX	EX	EX	EX	EX	
G112	CORR.	15F	14B/14EX	EX	20EX	20EX	22A	
G113	PULL OUT SPACE	15A	14B	20EX	20A	20A	20EX	22A

KEY TO MATERIALS

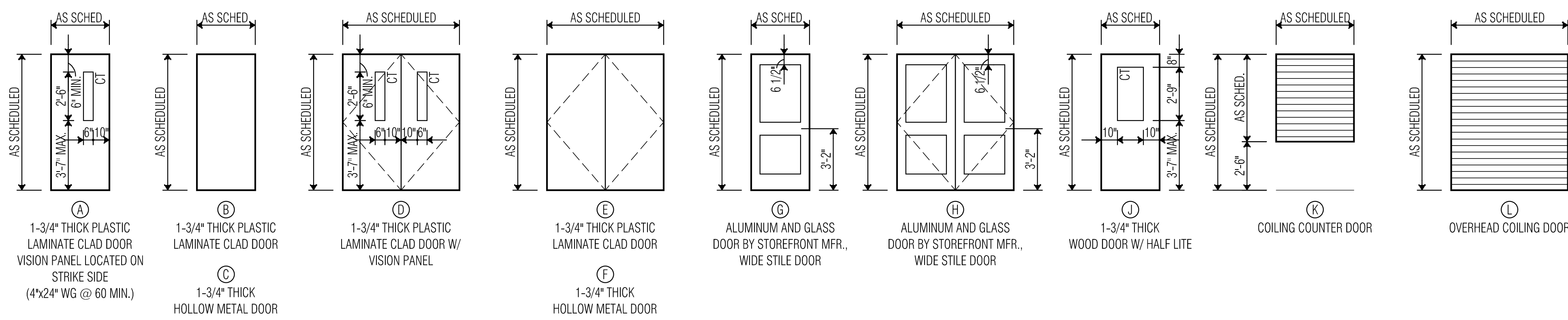
3EX	EXISTING 8" X 8" GLAZED CERAMIC TILE	---	---
3N	4" X 12" PORCELAIN TILE	20A	GYPSUM WALLBOARD - PAINT
---	---	20EX	EXISTING GYPSUM WALLBOARD - PAINT
14B	RUBBER BASE - COVE	---	---
14BEX	EXISTING RUBBER BASE - COVE	22A	2" X 2" ACOUSTIC LAY-IN PANELS
---	---	22EX	EXISTING LAY-IN PANELS IN EXISTING GRID
15A	VINYL COMPOSITION TILE	---	---
15F	LUXURY VINYL TILE	EX	EXISTING FINISH TO REMAIN
15EX	EXISTING VINYL COMPOSITION TILE	---	---

COLOR SCHEDULE

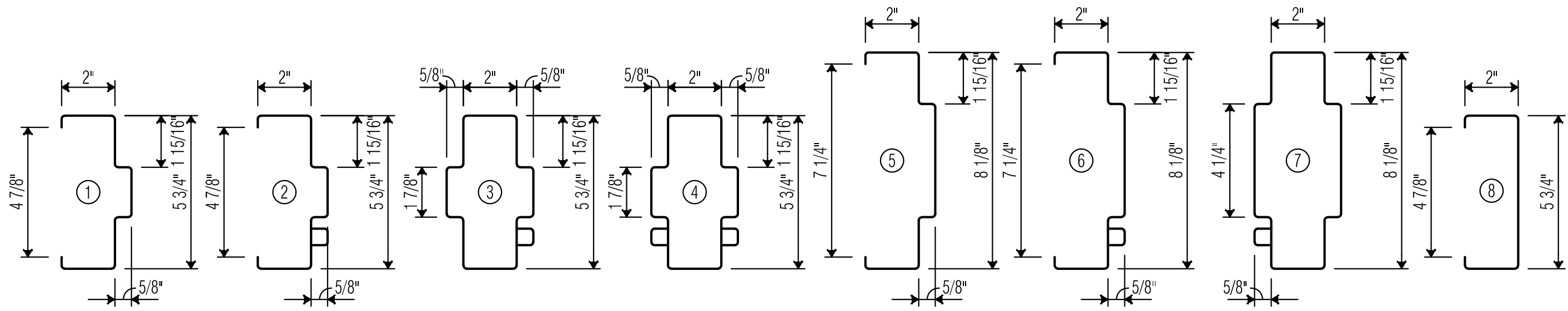
- 3N - HORIZON TILE CD LINEAR AS SELECTED BY ARCHITECT.
 - 14B1 - ROPPE COLOR AS SELECTED BY ARCHITECT.
 - 14B2 - BASE TO MATCH EXISTING IN ROOM.
 - 15A - AS SELECTED BY ARCHITECT.
 - 15F - AS SELECTED BY ARCHITECT.
 - P1 - BENJAMIN MOORE VANILLA MILKSHAKE OC-59
 - P2 - PAINT TO MATCH EXISTING PAINTED GYPSUM WALLBOARD IN EXISTING ROOMS.
 - P3 - PAINT TO MATCH EXISTING PAINTED GYPSUM BOARD CEILING.
 - PL-1 - BASE AND UPPER CABINETS PLASTIC LAMINATE AS SELECTED BY ARCHITECT
 - PL-2 - COUNTERTOP PLASTIC LAMINATE AS SELECTED BY ARCHITECT
- NOTE: REPAIR ALL EXISTING FINISHES DAMAGED DURING CONSTRUCTION. NEW FINISHES SHALL MATCH EXISTING.

FLOOR PATTERN LEGEND

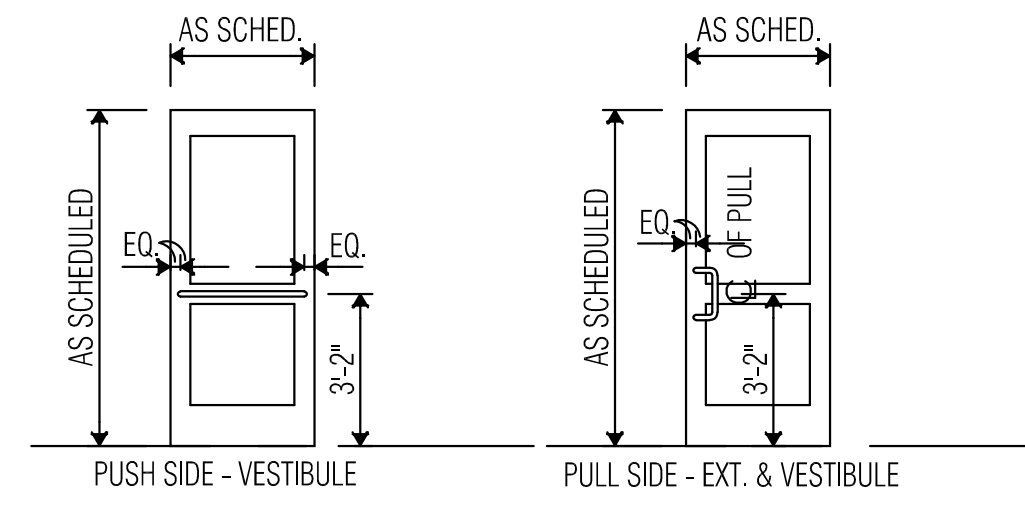
	ACCENT VCT - 15A
	LVT - 15F



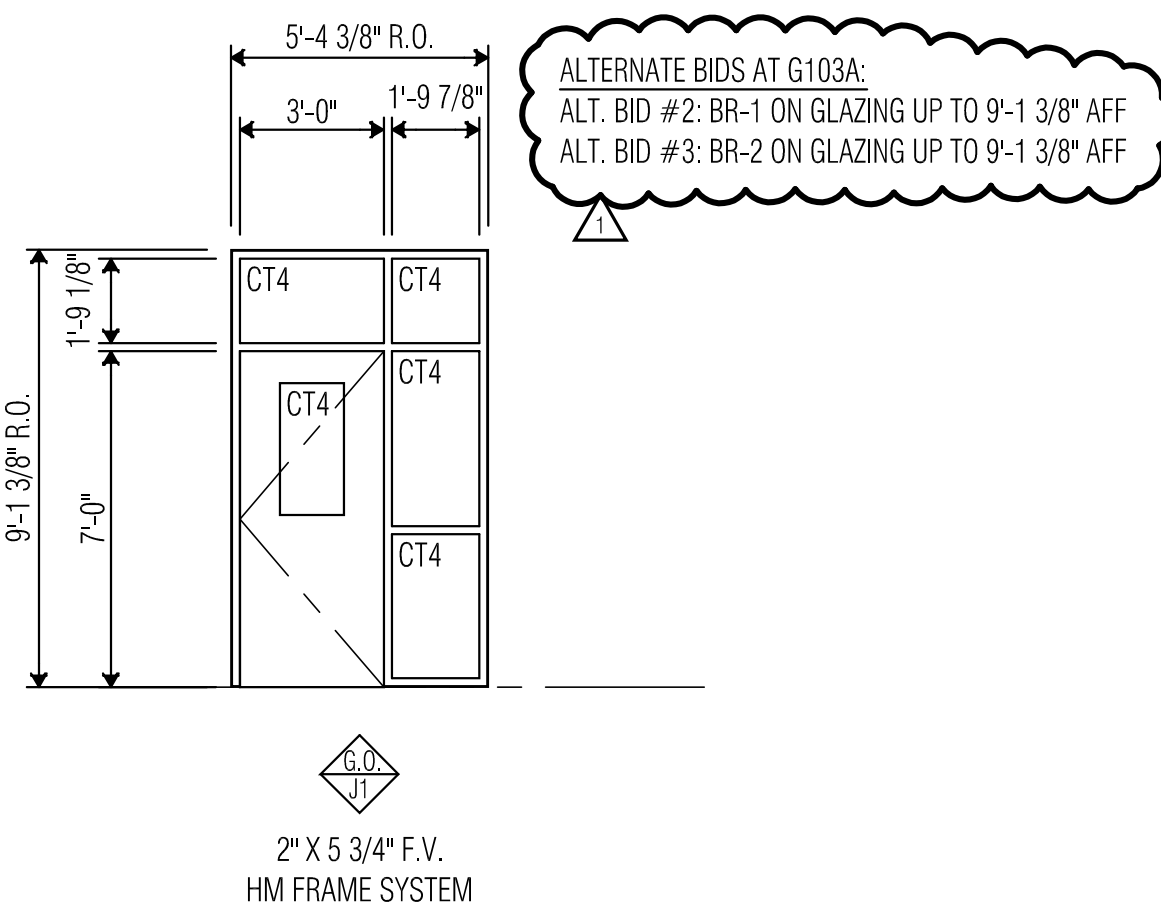
1 DOOR TYPES
SCALE: 1/4"=1'-0"



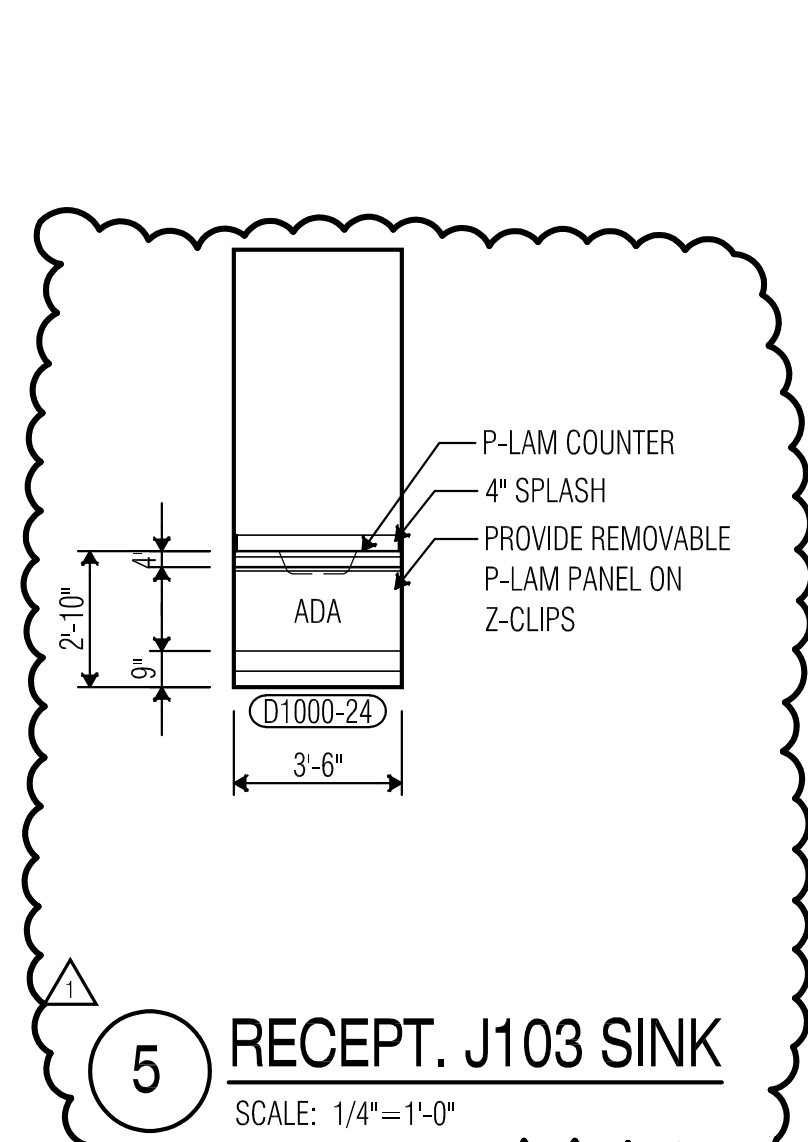
2 FRAME TYPES
SCALE: 3/8"=1'-0"



3 TYPICAL STOREFRONT PUSH - PULL MOUNTING HEIGHTS
SCALE: 1/4"=1'-0" D979



4 GLAZED OPENING ELEVATIONS
SCALE: 1/4"=1'-0"



5 RECEPT. J103 SINK
SCALE: 1/4"=1'-0"

DOOR SCHEDULE - C.F. THOMAS ELEMENTARY SCHOOL

DOOR NUMBER	DOOR TYPE	FRAME TYPE	DOOR OPENING WIDTH	DOOR OPENING HEIGHT	DETAIL	FIRE RATING	HEAD SET	REMARKS
J100A	EX	ALUM/EX ALUM	3'-0"	7'-0"	F.V.	---	---	EXIST. DARK BRONZE STOREFRONT
J100B	EX	ALUM/EX ALUM	3'-0"	7'-0"	F.V.	---	---	EXIST. DARK BRONZE STOREFRONT
J100C	EX	ALUM/EX ALUM	3'-0"	7'-0"	F.V.	---	---	EXIST. DARK BRONZE STOREFRONT
J100D	EX	ALUM/EX ALUM	3'-0"	7'-0"	F.V.	---	---	EXIST. DARK BRONZE STOREFRONT
J100E	EX	ALUM/EX ALUM	3'-0"	7'-0"	F.V.	---	---	EXIST. DARK BRONZE STOREFRONT
J100F	EX	ALUM/EX ALUM	3'-0"	7'-0"	F.V.	---	---	EXIST. DARK BRONZE STOREFRONT
J100G	EX	ALUM/EX ALUM	3'-0"	7'-0"	F.V.	---	---	EXIST. DARK BRONZE STOREFRONT
J100H	EX	ALUM/EX ALUM	3'-0"	7'-0"	F.V.	---	---	EXIST. DARK BRONZE STOREFRONT
J103A	J	HM	3'-0"	7'-0"	---	---	---	REF. GLAZED OPENING GO-J1 *90 MIN. *MATCH EXISTING WALL FIRE RATING
J103B	J	HM	3'-0"	7'-0"	---	---	---	REF. GLAZED OPENING GO-J1 *90 MIN. *MATCH EXISTING WALL FIRE RATING
J103C	EX	WD	EX HM	3'-0"	7'-0"	F.V.	---	---
J104	A	HM	3'-0"	7'-0"	---	---	---	---
J113	A	HM	3'-0"	7'-0"	---	---	---	---

DOOR SCHEDULE NOTES

- POSITIONING SENSORS
- ELECTRO-MECHANICAL PANIC BAR
- CARD READER
- DOOR RELEASE FROM RECEPTION DESK
- EXISTING DOOR, EXISTING FRAME, NEW HARDWARE
- EXISTING FRAME, NEW DOOR, NEW HARDWARE
- CHANGE DOOR SWING TO PREVENT DOOR FROM SWINGING BOTH DIRECTIONS
- CHANGE SWING OF DOOR
- WEATHERSTRIPPING ALL SIDES
- REMOVABLE MULLION

GENERAL STOREFRONT NOTES

- DASHED MEMBERS SHALL BE KAWNEER 500 HEAVY WALL OR APPROVED EQUAL. TYPICAL AT ALL DOOR JAMBS.
- FIELD VERIFY ALL DIMENSIONS PRIOR TO FABRICATION
- REF. DETAIL 3 THIS SHEET FOR TYP. PUSH/PULL MOUNTING HEIGHTS AT ALL STOREFRONT DOORS.

GLASS LEGEND

TT	1" THICK TINTED TEMPERED INSULATING GLASS
TT4	1/4" THICK TINTED TEMPERED GLASS
CT	1" THICK CLEAR TEMPERED INSULATING GLASS
CT4	1/4" THICK CLEAR TEMPERED GLASS
SP	1" THICK INSULATING SPANDREL GLASS PANEL
FT	1" THICK FROSTED TEMPERED INSULATING GLASS
BR-1	1/2" THICK CLEAR LAMINATED SAFETY GLASS (LEVEL IIA PRODUCTS)
BR-2	1 9/16" THICK GLASS-CLAD POLYCARBONATE AND CONTAINS AN EXPOSED POLYCARBONATE SURFACE WITH AN ABRASION RESISTANT COATING ON THE WITNESS (SAFE) SIDE (LEVEL IIA PRODUCTS)

ROOM FINISH SCHEDULE - C.F. THOMAS ELEMENTARY SCHOOL

ROOM NUMBER	ROOM NAME	FLOOR	BASE	WALLS				CEILING	REMARKS
				NORTH	EAST	SOUTH	WEST		
J100	VEST.	EX	EX	---	EX	---	EX	EX	
J101	CORR.	EX	EX	---	EX	---	EX	EX	
J102	MECH.	EX	EX	EX	EX	EX	EX	EX	
J103	RECEPT.	15F	14B	20A/20EX	3N/7 20A/20EX	20EX	20A/20EX	22A	* AT HAND SINK ALCOVE
J104	ASSIST. PRIN.	15F	14B	20EX	20A	20A	20EX	22A	
J105	TOILET	EX	EX	3N	3N	3N	3N	20EX	
J106	CORR.	EX	EX	EX	EX	EX	EX	EX	
J109	CORR.	15F	14B/14EX	20A/20EX	20EX	20EX	20A/20EX	22EX	
J110	NURSE	EX	EX	EX	EX	EX	EX	EX	
J111	TOILET	EX	EX	EX	EX	EX	EX	EX	
J112	CORR.	15F	14B/14EX	EX	20EX	20EX	20EX	22A	
J113	PULL OUT SPACE	15A	14B	20EX	20A	20A	20EX	22A	

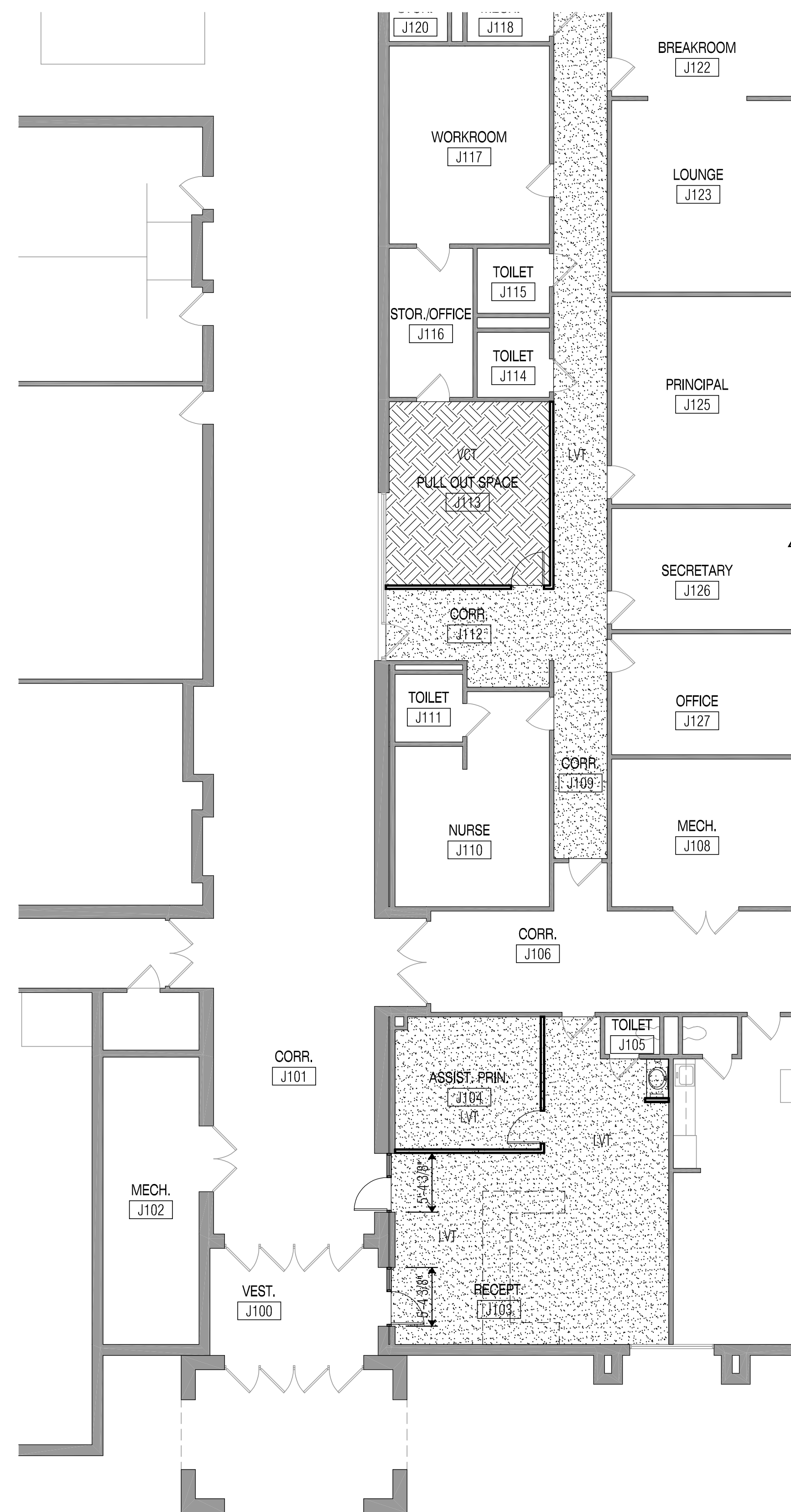
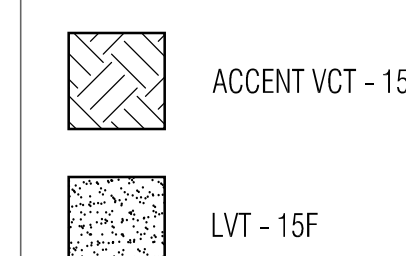
KEY TO MATERIALS

3EX	EXISTING 8" X 8" GLAZED CERAMIC TILE	---	---
3N	4" X 12" PORCELAIN TILE	20A	GYPSUM WALLBOARD - PAINT
---	---	20EX	EXISTING GYPSUM WALLBOARD - PAINT
14B	RUBBER BASE - COVE	---	---
14BEX	EXISTING RUBBER BASE - COVE	22A	2" X 2" ACOUSTIC LAY-IN PANELS
---	---	22EX	EXISTING LAY-IN PANELS IN EXISTING GRID
15A	VINYL COMPOSITION TILE	---	---
15F	LUXURY VINYL TILE	EX	EXISTING FINISH TO REMAIN
15EX	EXISTING VINYL COMPOSITION TILE	---	---

COLOR SCHEDULE

- 3N - HORIZON TILE CD LINEAR AS SELECTED BY ARCHITECT.
 - 14B1 - ROPPE COLOR AS SELECTED BY ARCHITECT.
 - 14B2 - BASE TO MATCH EXISTING IN ROOM.
 - 15A - AS SELECTED BY ARCHITECT.
 - 15F - AS SELECTED BY ARCHITECT.
 - P1 - BENJAMIN MOORE VANILLA MILKSHAKE OC-59
 - P2 - PAINT TO MATCH EXISTING PAINTED GYPSUM WALLBOARD IN EXISTING ROOMS.
 - P3 - PAINT TO MATCH EXISTING PAINTED GYPSUM BOARD CEILING.
 - PL-1 - BASE AND UPPER CABINETS PLASTIC LAMINATE AS SELECTED BY ARCHITECT
 - PL-2 - COUNTERTOP PLASTIC LAMINATE AS SELECTED BY ARCHITECT
- NOTE: REPAIR ALL EXISTING FINISHES DAMAGED DURING CONSTRUCTION. NEW FINISHES SHALL MATCH EXISTING.

FLOOR PATTERN LEGEND



10 FINISH FLOOR PLAN - C.F. THOMAS ES
SCALE: 1/8"=1'-0"



ISSUED: FEBRUARY 14, 2019

REVISIONS

Revision No.	Date
Addendum No. 3	Feb. 28, 2019

Director: JFK
Designer: VLK
Quality Control: VLK
Proj. Coord.: VLK
DJM

PROJECT NO.

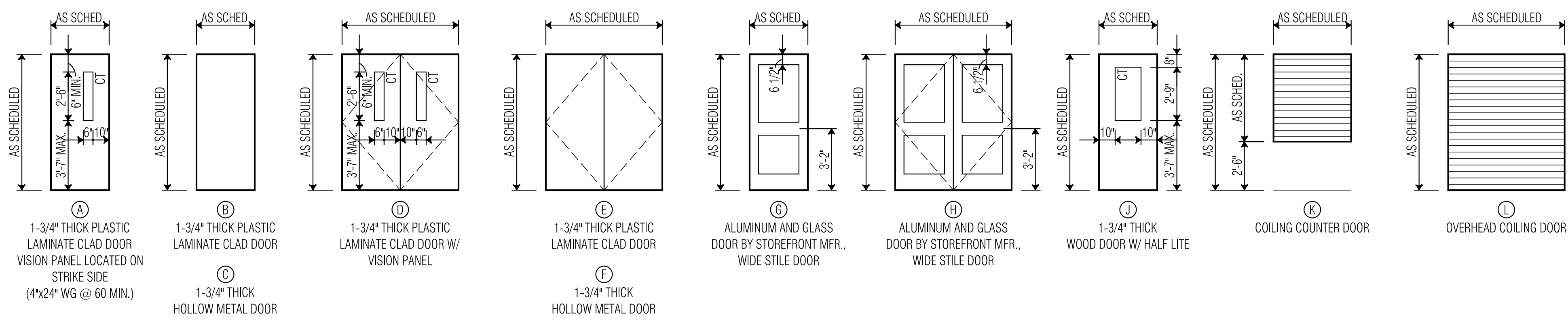
1886.00

SHEET TITLE

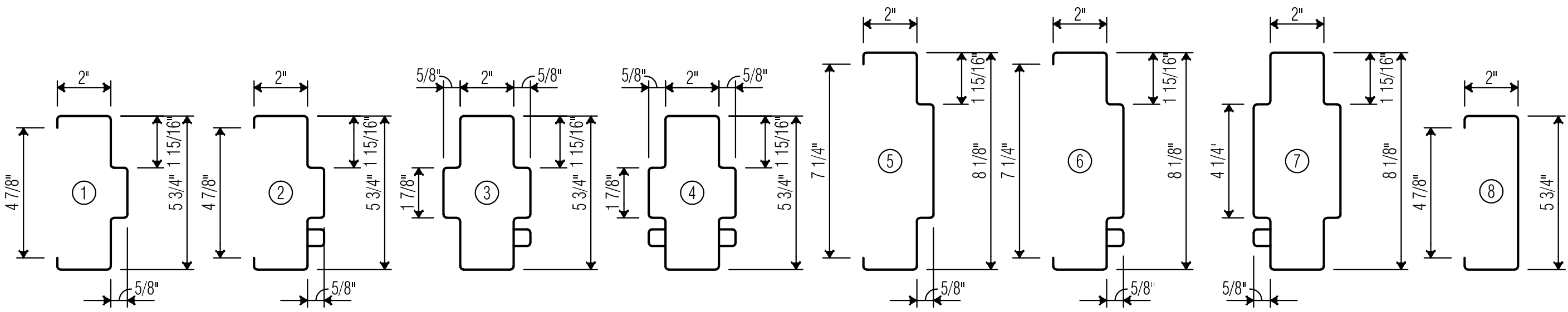
CARRIE FRANCIS THOMAS ES
DOOR SCHEDULE & DETAILS
AND FLOOR FINISH PLAN

SHEET NO.

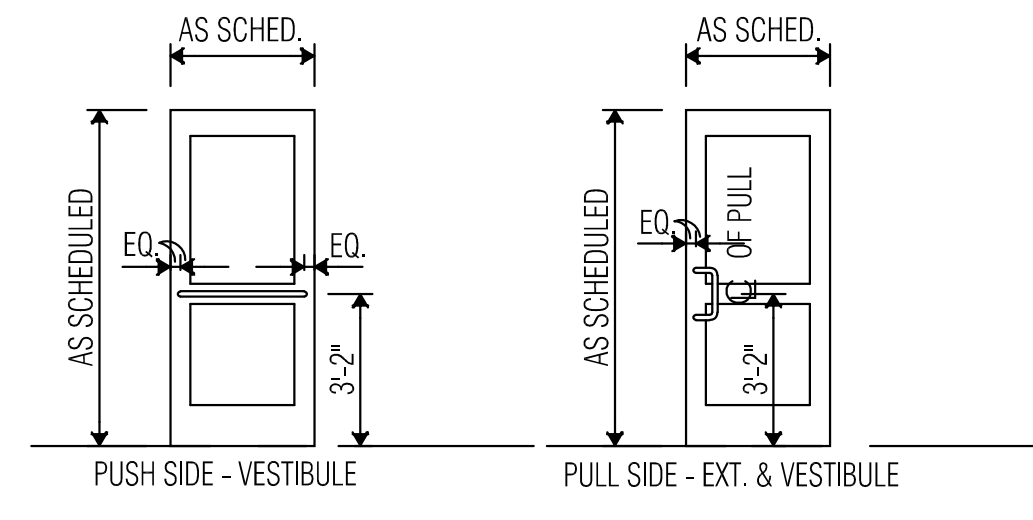
A97.01



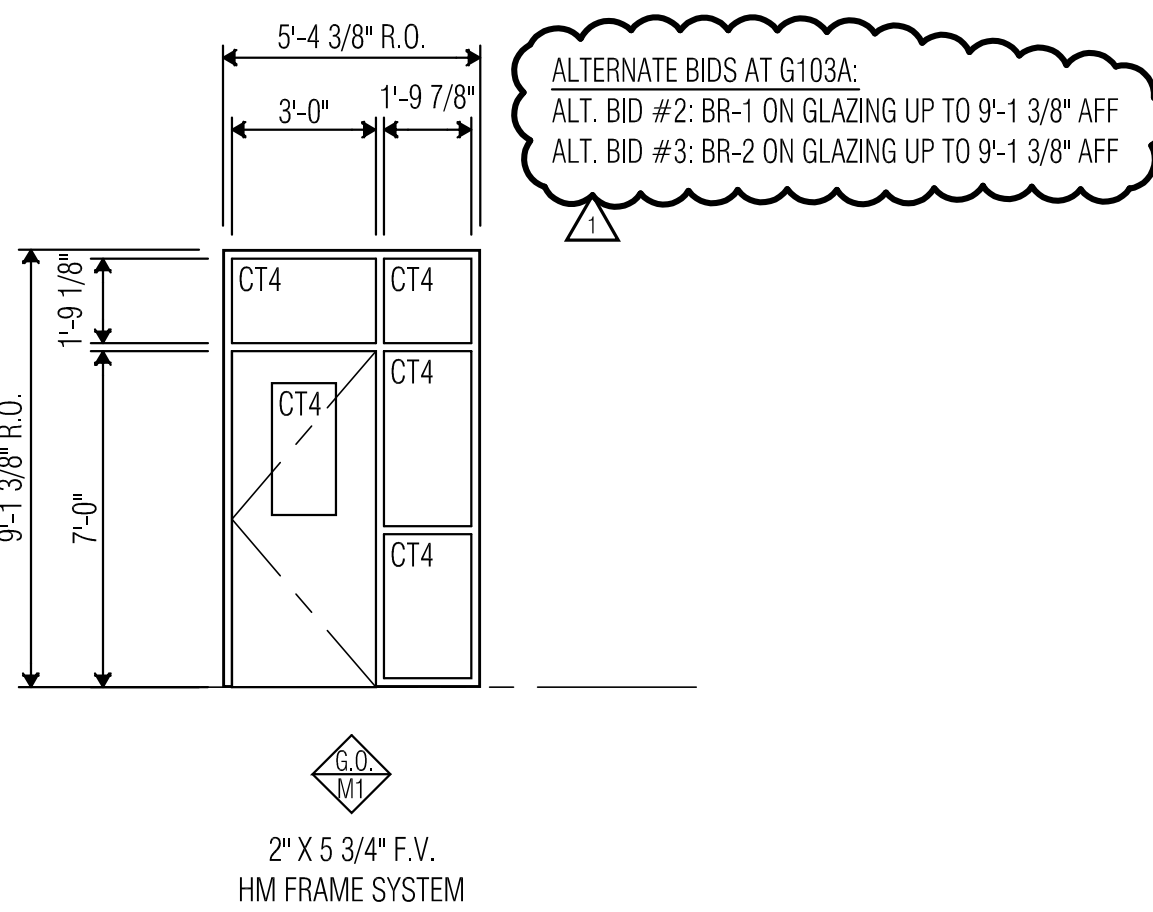
1 DOOR TYPES
SCALE: 1/4"=1'-0"



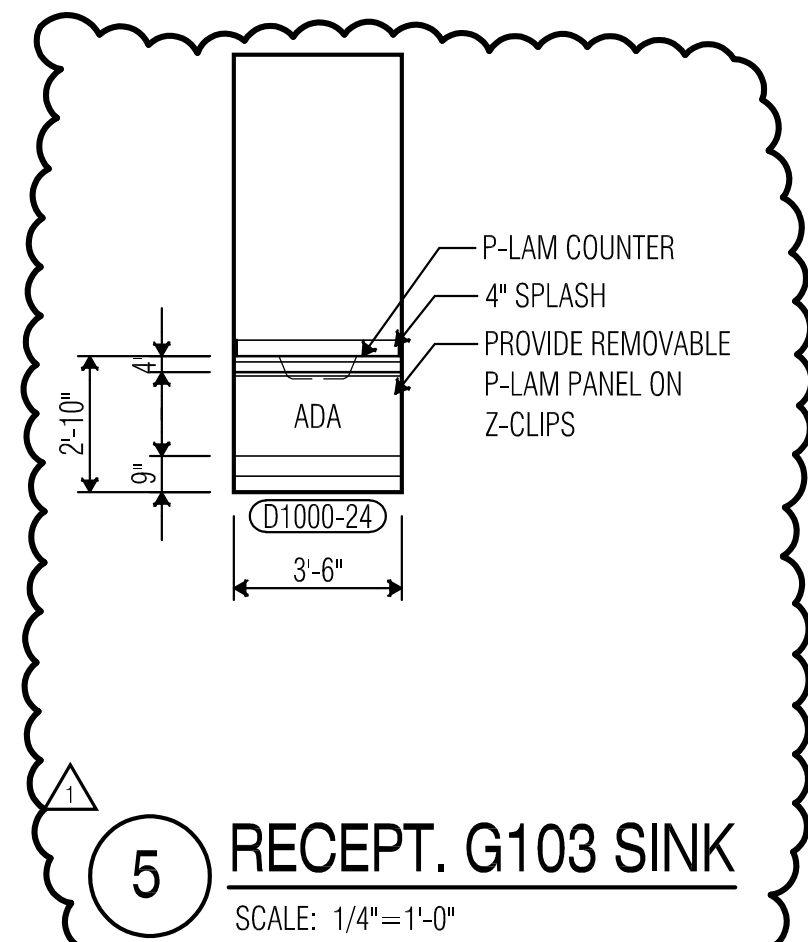
2 FRAME TYPES
SCALE: 3\"/>



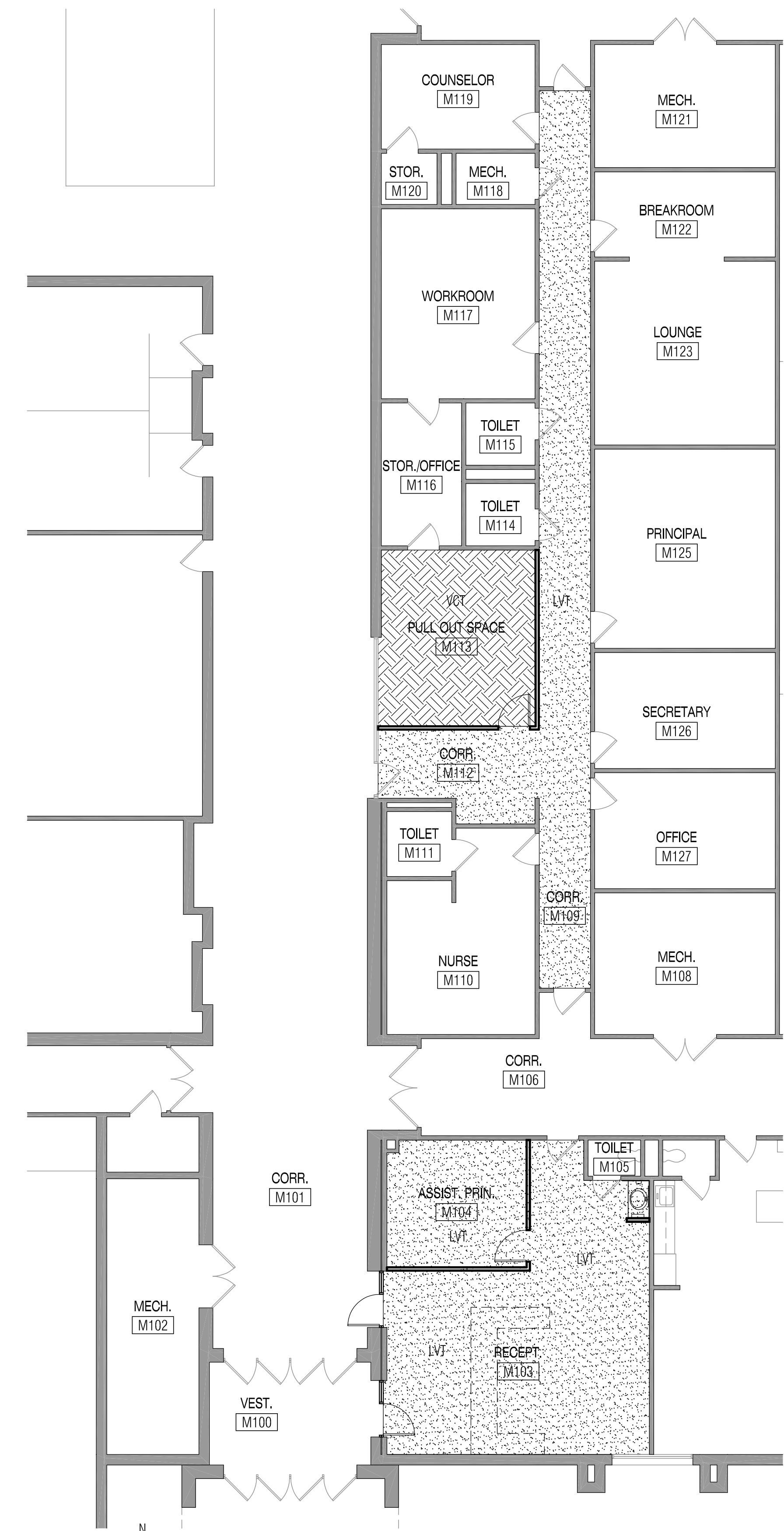
3 TYPICAL STOREFRONT PUSH - PULL MOUNTING HEIGHTS
SCALE: 1/4"=1'-0" D979



4 GLAZED OPENING ELEVATIONS
SCALE: 1/4"=1'-0"



5 RECEPT. G103 SINK
SCALE: 1/4"=1'-0"



10 FINISH FLOOR PLAN - JOHN D. SPICER ES
SCALE: 1/8"=1'-0"

DOOR SCHEDULE - JOHN D. SPICER ELEMENTARY SCHOOL

DOOR NUMBER	DOOR TYPE	FRAME TYPE	DOOR OPENING WIDTH	DOOR OPENING HEIGHT	DETAIL	FIRE RATING	HRDWR SET	REMARKS
M100A	EX ALUM/EX ALUM	3'-0" F.V.	3'-0"	7'-0"	EXIST. CLR. ANODIZED STOREFRONT	---	---	
M100B	EX ALUM/EX ALUM	3'-0" F.V.	3'-0"	7'-0"	EXIST. CLR. ANODIZED STOREFRONT	---	---	
M100C	EX ALUM/EX ALUM	3'-0" F.V.	3'-0"	7'-0"	EXIST. CLR. ANODIZED STOREFRONT	---	---	
M100D	EX ALUM/EX ALUM	3'-0" F.V.	3'-0"	7'-0"	EXIST. CLR. ANODIZED STOREFRONT	---	---	
M100E	EX ALUM/EX ALUM	3'-0" F.V.	3'-0"	7'-0"	EXIST. CLR. ANODIZED STOREFRONT	---	---	NOTE 3
M100F	EX ALUM/EX ALUM	3'-0" F.V.	3'-0"	7'-0"	EXIST. CLR. ANODIZED STOREFRONT	---	---	
M100G	EX ALUM/EX ALUM	3'-0" F.V.	3'-0"	7'-0"	EXIST. CLR. ANODIZED STOREFRONT	---	---	
M100H	EX ALUM/EX ALUM	3'-0" F.V.	3'-0"	7'-0"	EXIST. CLR. ANODIZED STOREFRONT	---	---	
M103A	J	HM	3'-0"	7'-0"	REF. GLAZED OPENING GO-M1	190 MIN.	---	*MATCH EXISTING WALL FIRE RATING
M103B	J	HM	3'-0"	7'-0"	REF. GLAZED OPENING GO-M1	190 MIN.	---	NOTES 3, 4 *MATCH EXISTING WALL FIRE RATING
M103C	EX WD	EX HM	3'-0" F.V.	7'-0" F.V.	---	---	---	NOTES 3, 4
M104	A	HM	3'-0"	7'-0"	---	---	---	
M113	A	HM	3'-0"	7'-0"	---	---	---	

DOOR SCHEDULE NOTES

1. POSITIONING SENSORS
2. ELECTRO-MECHANICAL PANIC BAR
3. CARD READER
4. DOOR RELEASE FROM RECEPTION DESK
5. EXISTING DOOR, EXISTING FRAME, NEW HARDWARE
6. EXISTING FRAME, NEW DOOR, NEW HARDWARE
7. CHANGE DOOR SWING TO PREVENT DOOR FROM SWINGING BOTH DIRECTIONS
8. CHANGE SWING OF DOOR
9. WEATHERSTRIPPING ALL SIDES
10. REMOVABLE MULLION

GENERAL STOREFRONT NOTES

1. DASHED MEMBERS SHALL BE KAWNEER 500 HEAVY WALL OR APPROVED EQUAL. TYPICAL AT ALL DOOR JAMBS.
2. FIELD VERIFY ALL DIMENSIONS PRIOR TO FABRICATION
3. REF. DETAIL 3 THIS SHEET FOR TYP. PUSH/PULL MOUNTING HEIGHTS AT ALL STOREFRONT DOORS.

GLASS LEGEND

TT	1" THICK TINTED TEMPERED INSULATING GLASS
TT4	1/4" THICK TINTED TEMPERED GLASS
CT	1" THICK CLEAR TEMPERED INSULATING GLASS
CT4	1/4" THICK CLEAR TEMPERED GLASS
SP	1" THICK INSULATING SPANDREL GLASS PANEL
FT	1" THICK FROSTED TEMPERED INSULATING GLASS
BR-1	1/2" THICK CLEAR LAMINATED SAFETY GLASS (LEVEL IIA PRODUCTS)
BR-2	1 9/16" THICK GLASS-CLAD POLYCARBONATE AND CONTAINS AN EXPOSED POLYCARBONATE SURFACE WITH AN ABRASION RESISTANT COATING ON THE WITNESS (SAFE) SIDE (LEVEL IIA PRODUCTS)

ROOM FINISH SCHEDULE - JOHN D. SPICER ELEMENTARY SCHOOL

ROOM NUMBER	ROOM NAME	FLOOR	BASE	WALLS				CEILING	REMARKS
				NORTH	EAST	SOUTH	WEST		
M100	VEST.	EX	EX	---	EX	---	EX		
M101	CORR.	EX	EX	---	EX	---	EX		
M102	MECH.	EX	EX	EX	EX	EX	EX		
M103	RECEPT.	15F	14B	20A/20EX	3N/7	20EX	20A/20EX	22A * AT HAND SINK ABOVE	
M104	ASSIST. PRIN.	15F	14B	20EX	20A	20A	20EX		
M105	TOILET	EX	EX	3N	3N	3N	3N	20EX	
M106	CORR.	EX	EX	EX	EX	EX	EX		
M109	CORR.	15F	14B/14EX	20A/20EX	20EX	20EX	20A/20EX	22EX	
M110	NURSE	EX	EX	EX	EX	EX	EX		
M111	TOILET	EX	EX	EX	EX	EX	EX		
M112	CORR.	15F	14B/14EX	EX	20EX	20EX	20EX	22A	
M113	PULL OUT SPACE	15A	14B	20EX	20A	20A	20EX	22A	

KEY TO MATERIALS

SEEX	EXISTING 8" X 8" GLAZED CERAMIC TILE	---	---
3N	4" X 12" PORCELAIN TILE	20A	GYPSUM WALLBOARD - PAINT
---	---	20EX	EXISTING GYPSUM WALLBOARD - PAINT
14B	RUBBER BASE - COVE	---	---
14BEX	EXISTING RUBBER BASE - COVE	22A	2" X 2" ACOUSTIC LAY-IN PANELS
---	---	22EX	EXISTING LAY-IN PANELS IN EXISTING GRID
15A	VINYL COMPOSITION TILE	---	---
15F	LUXURY VINYL TILE	EX	EXISTING FINISH TO REMAIN
15EX	EXISTING VINYL COMPOSITION TILE	---	---

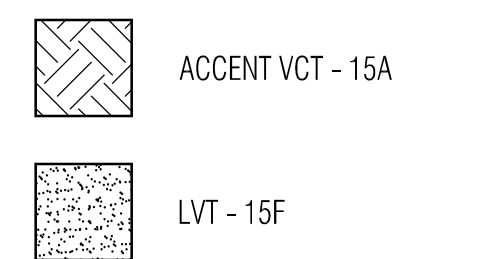
FINISH SCHEDULE NOTES

1. REFERENCE PLAN NORTH INSTEAD OF TRUE NORTH.

COLOR SCHEDULE

- 3N - HORIZON TILE CD LINEAR AS SELECTED BY ARCHITECT.
 - 14B1 - ROPPE COLOR AS SELECTED BY ARCHITECT. 14B2 - BASE TO MATCH EXISTING IN ROOM.
 - 15A - AS SELECTED BY ARCHITECT. 15F - AS SELECTED BY ARCHITECT.
 - P1 - BENJAMIN MOORE VANILLA MILKSHAKE OC-59
 - P2 - PAINT TO MATCH EXISTING PAINTED GYPSUM WALLBOARD IN EXISTING ROOMS.
 - P3 - PAINT TO MATCH EXISTING PAINTED GYPSUM BOARD CEILING.
 - PL-1 - BASE AND UPPER CABINETS PLASTIC LAMINATE AS SELECTED BY ARCHITECT
 - PL-2 - COUNTERTOP PLASTIC LAMINATE AS SELECTED BY ARCHITECT
- NOTE: REPAIR ALL EXISTING FINISHES DAMAGED DURING CONSTRUCTION. NEW FINISHES SHALL MATCH EXISTING.

FLOOR PATTERN LEGEND



VLK ARCHITECTS, Inc.
2821 West 7th Street, Suite 300
Fort Worth, Texas 76107
Main Phone: 817.633.1600
www.vlkarchitects.com

BIRDVILLE ISD
NORTH RICHLAND HILLS, HALTOM CITY, HURST, AND WATAUGA, TEXAS

Controlled Entry at 15 Campuses

ISSUED: FEBRUARY 14, 2019

REVISIONS	
Revision No.	Feb. 28, 2019
Addendum No. 3	Feb. 28, 2019

Director: JFK | Drawn By: VLK
Designer: VLK | Quality Control: VLK
Proj. Coord.: DJM

PROJECT NO. 1886.00

SHEET TITLE: JOHN D. SPICER ES DOOR SCHEDULE & DETAILS AND FINISH FLOOR PLAN

SHEET NO. A127.01

Copyright © 2019 VLK ARCHITECTS

DOOR SCHEDULE - W.A. PORTER ELEMENTARY SCHOOL

DOOR NUMBER	DOOR TYPE	FRAME TYPE	DOOR OPENING WIDTH	DOOR OPENING HEIGHT	DETAIL	FIRE RATING	REMARKS
N100A	EX ALUM/EX ALUM	ALUM	3'-0"	7'-0"	EXIST. ALUM FRAME SYSTEM	---	---
N100B	EX ALUM/EX ALUM	ALUM	3'-0"	7'-0"	EXIST. ALUM FRAME SYSTEM	---	NOTE 3
N100C	H	ALUM	6'-0"	7'-0"	REF. STOREFRONT IA	---	NOTES 3, 10
N102A	G	ALUM	3'-0"	7'-0"	REF. STOREFRONT NB	---	---
N102B	J	EX HM	3'-0"	7'-0"	EXIST. HM FRAME SYSTEM	---	NOTES 3, 4, 6
N105	J	HM	3'-0"	7'-0"	---	---	---
N106	B	HM	3'-0"	7'-0"	---	---	---
N107	A	HM	3'-0"	7'-0"	---	---	---
N113	A	HM	3'-0"	7'-0"	---	---	---
N114	A	HM	3'-0"	7'-0"	---	---	---

DOOR SCHEDULE NOTES

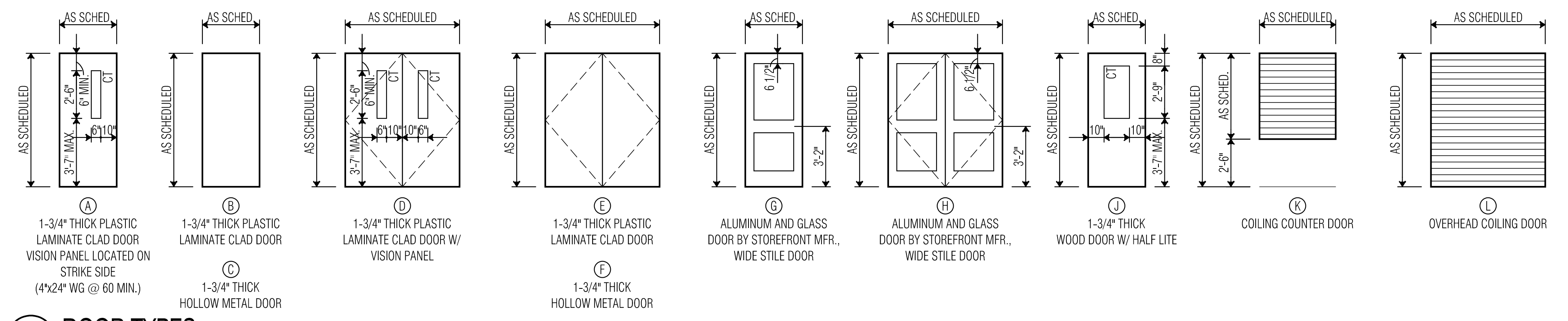
- POSITIONING SENSORS
- ELECTRO-MECHANICAL PANIC BAR
- CARD READER
- DOOR RELEASE FROM RECEPTION DESK
- EXISTING DOOR, EXISTING FRAME, NEW HARDWARE
- EXISTING FRAME, NEW DOOR, NEW HARDWARE
- CHANGE DOOR SWING TO PREVENT DOOR FROM SWINGING BOTH DIRECTIONS
- CHANGE SWING OF DOOR
- WEATHERSTRIPPING ALL SIDES
- REMOVABLE MULLION

GENERAL STOREFRONT NOTES

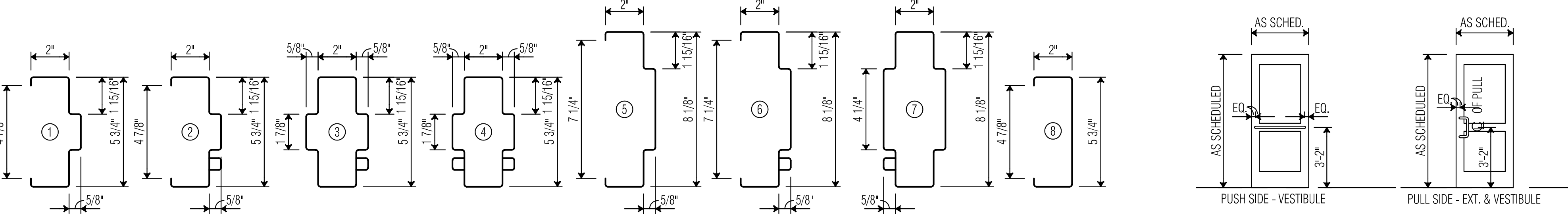
- DASHED MEMBERS SHALL BE KAWNEER 500 HEAVY WALL' OR APPROVED EQUAL. TYPICAL AT ALL DOOR JAMBS.
- FIELD VERIFY ALL DIMENSIONS PRIOR TO FABRICATION OF STOREFRONT/CURTAIN WALL.
- REF. DETAIL 3 THIS SHEET FOR TYP. PUSH/PULL MOUNTING HEIGHTS AT ALL STOREFRONT DOORS.

GLASS LEGEND

TT	1" THICK TINTED TEMPERED INSULATING GLASS
TT4	1/4" THICK TINTED TEMPERED GLASS
CT4	1" THICK CLEAR TEMPERED INSULATING GLASS
CT	1/4" THICK CLEAR TEMPERED GLASS
SP	1" THICK INSULATING SPANDEL GLASS PANEL
FT	1" THICK FROSTED TEMPERED INSULATING GLASS
BR-1	1/2" THICK CLEAR LAMINATED SAFETY GLASS (LEVEL IIA PRODUCTS)
BR-2	1 9/16" THICK GLASS-CLAD POLYCARBONATE AND CONTAINS AN EXPOSED POLYCARBONATE SURFACE WITH AN ABRASION RESISTANT COATING ON THE WITNESS (SAFE) SIDE (LEVEL IIA PRODUCTS)

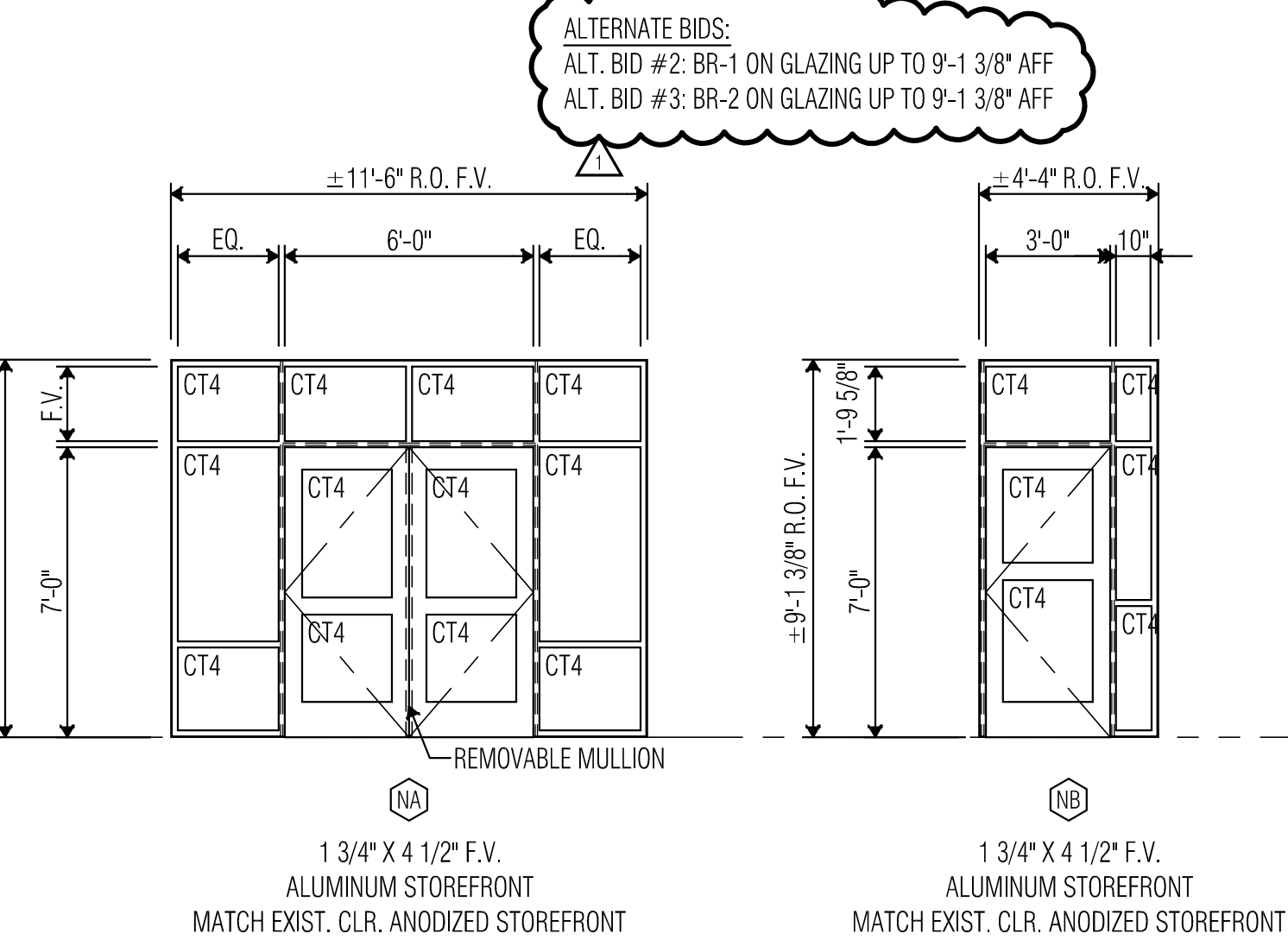


1 DOOR TYPES
SCALE: 1/4"=1'-0"

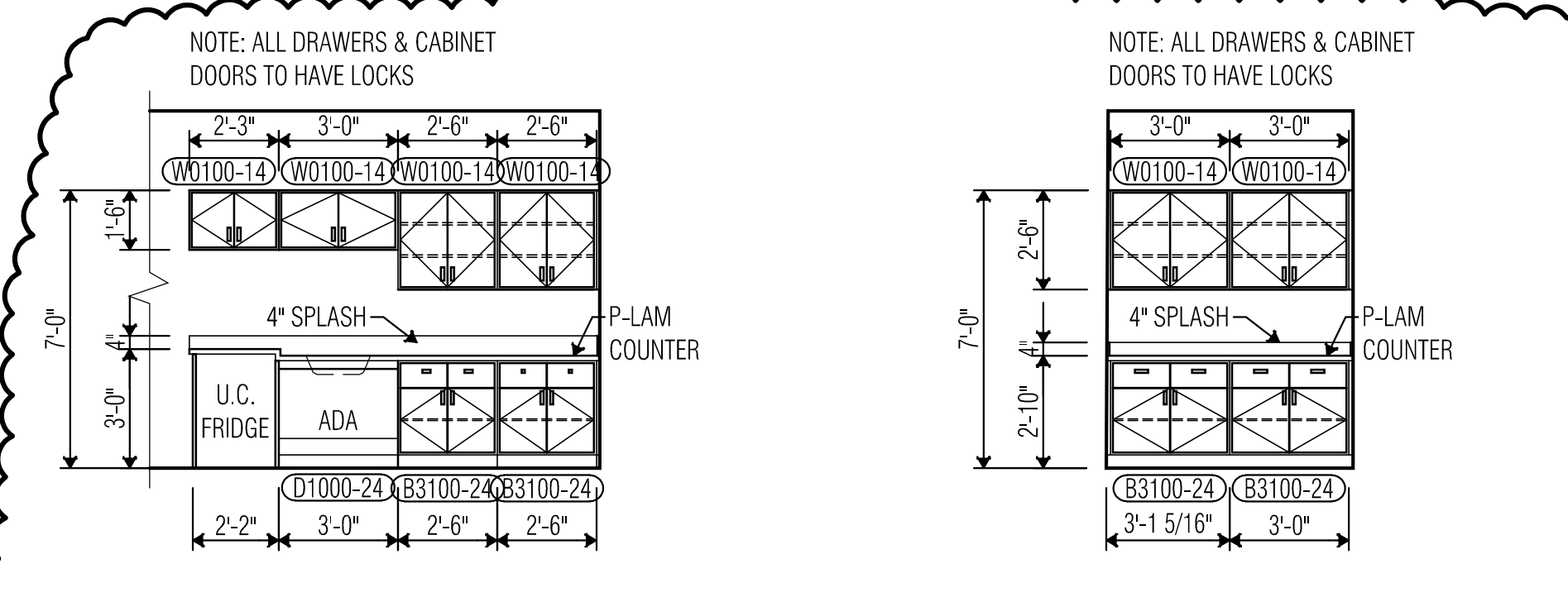


3 TYPICAL STOREFRONT PUSH - PULL MOUNTING HEIGHTS
SCALE: 1/4"=1'-0"

2 FRAME TYPES
SCALE: 3"=1'-0"



4 STOREFRONT ELEVATIONS
SCALE: 1/4"=1'-0"



5 NURSE N105 SOUTH ELEVATION
SCALE: 1/4"=1'-0"

6 NURSE N105 NORTH ELEVATION
SCALE: 1/4"=1'-0"

ROOM FINISH SCHEDULE - W.A. PORTER ELEMENTARY SCHOOL

ROOM NUMBER	ROOM NAME	FLOOR	BASE	WALLS				CEILING	REMARKS
				NORTH	EAST	SOUTH	WEST		
N100	VEST.	EX	EX	EX	EX	---	EX	22EX	
N101	CORR.	EX	EX	---	EX	---	EX	22EX	
N102	RECEPTION	15F	14B	20A	20A	20A	20A	22A	
N103	CORR.	15F	14B	20A	20A	20A	20A	22A	
N104	TOILET	EX	14B	20A	20A	20A	20A	22A	
N105	NURSE	15F	14B	20A	20A	20A	20A	22A	
N106	TOILET	EX	14B	20A	20A	20A	20A	22A	
N107	ASSIST. PRIN.	15F	14B	20A	20A	20A	20A	22A	
N108	PRINCIPAL	EX	EX	EX	EX	EX	EX	EX	
N109	STOR.	EX	EX	EX	EX	EX	EX	EX	
N110	MECH.	EX	EX	EX	EX	EX	EX	EX	
N111	STOR.	EX	EX	EX	EX	EX	EX	EX	
N112	BOOKS	EX	EX	EX	EX	EX	EX	EX	
N113	SECRETARY	15F	14B	20A	20A	20A	20A	22A	
N114	ATTENDANCE	15F	14B	20A	20A	20A	20A	22A	

KEY TO MATERIALS

3E	8" X 8" GLAZED CERAMIC TILE	---	---
3EX	EXISTING 8" X 8" GLAZED CERAMIC TILE	20A	GYPSUM WALLBOARD - PAINT
---	---	20EX	EXISTING GYPSUM WALLBOARD - PAINT
14B	RUBBER BASE - COVE	---	---
14BEX	EXISTING RUBBER BASE - COVE	22A	2" X 2" ACOUSTIC LAY-IN PANELS
---	---	22EX	EXISTING LAY-IN PANELS IN EXISTING GRID
15A	VINYL COMPOSITION TILE	---	---
15F	LUXURY VINYL TILE	EX	EXISTING FINISH TO REMAIN
15EX	EXISTING VINYL COMPOSITION TILE	---	---

COLOR SCHEDULE

14B1 - ROPPE COLOR AS SELECTED BY ARCHITECT.
14B2 - BASE TO MATCH EXISTING IN ROOM.

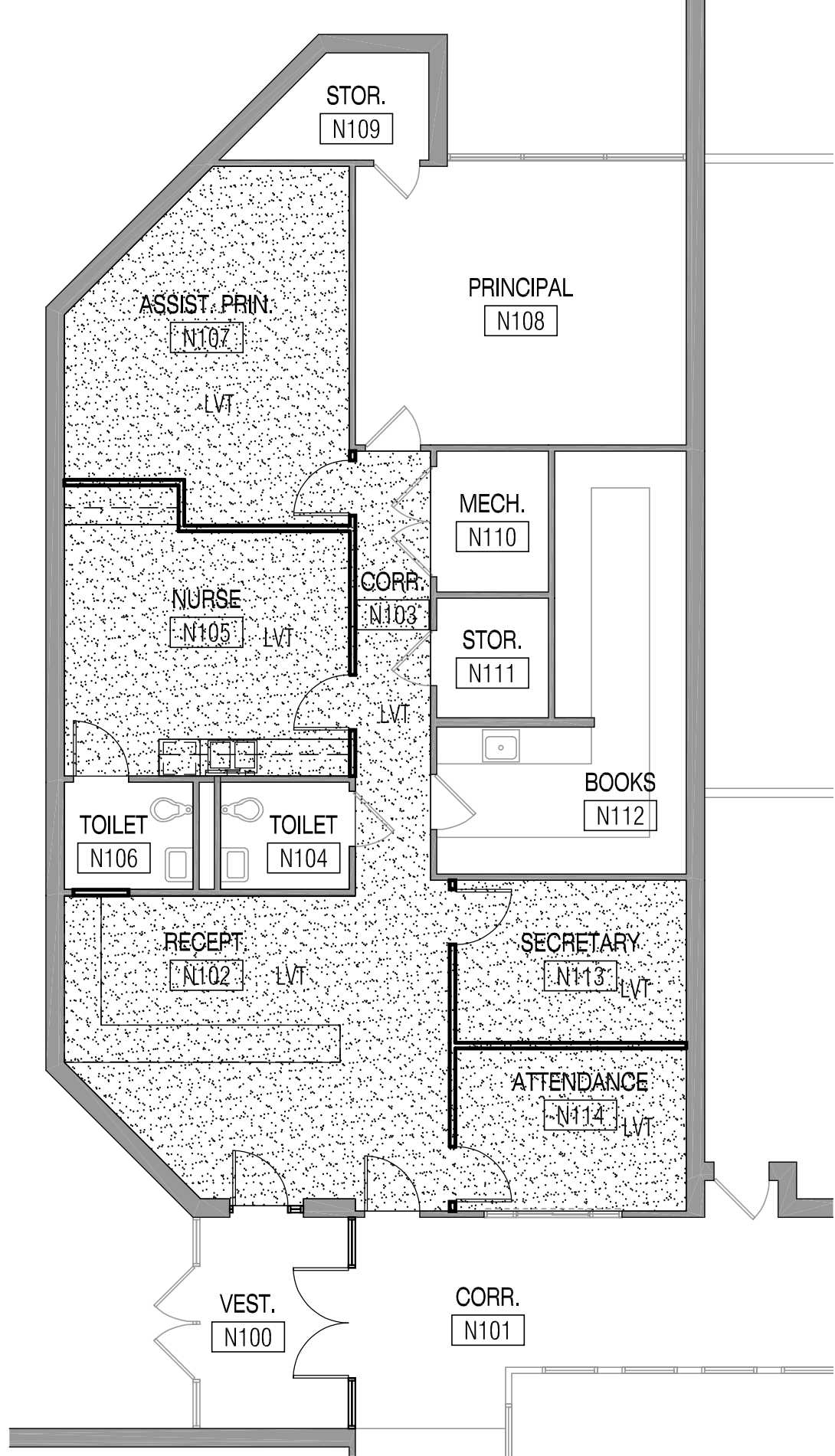
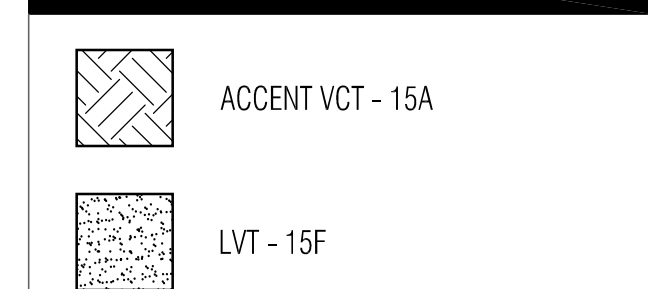
15A - AS SELECTED BY ARCHITECT.
15F - AS SELECTED BY ARCHITECT.

P1 - BENJAMIN MOORE VANILLA MILKSHAKE OC-39
P2 - PAINT TO MATCH EXISTING PAINTED GYPSUM WALLBOARD IN EXISTING ROOMS.
P3 - PAINT TO MATCH EXISTING PAINTED GYPSUM BOARD CEILING.

PL-1 - BASE AND UPPER CABINETS PLASTIC LAMINATE AS SELECTED BY ARCHITECT
PL-2 - COUNTERTOP PLASTIC LAMINATE AS SELECTED BY ARCHITECT

NOTE: REPAIR ALL EXISTING FINISHES DAMAGED DURING CONSTRUCTION. NEW FINISHES SHALL MATCH EXISTING.

FLOOR PATTERN LEGEND



10 FINISH FLOOR PLAN - W.A. PORTER ES
SCALE: 1/8"=1'-0"



ISSUED: FEBRUARY 14, 2019

REVISIONS

Revision No.	Date
1	Feb. 28, 2019

Director: JFK
Designer: VLK
Proj. Coord.: DJM

Drawn By: VLK
Quality Control: VLK

PROJECT NO. 1886.00

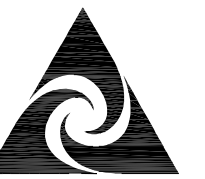
SHEET TITLE: W.A. PORTER ES DOOR SCHEDULE & DETAILS AND FINISH FLOOR PLAN

SHEET NO.

A137.01



Reed, Wells, Benson & Company
 Consulting Engineers
 Firm Registration # 523776
 12001 NORTH CENTRAL EXPWY. PHONE: 972.788.4222
 SUITE 1100 FAX: 972.788.4000
 DALLAS, TEXAS 75243 WWW.RWB.NET
 RWB PROJECT # 18153.00



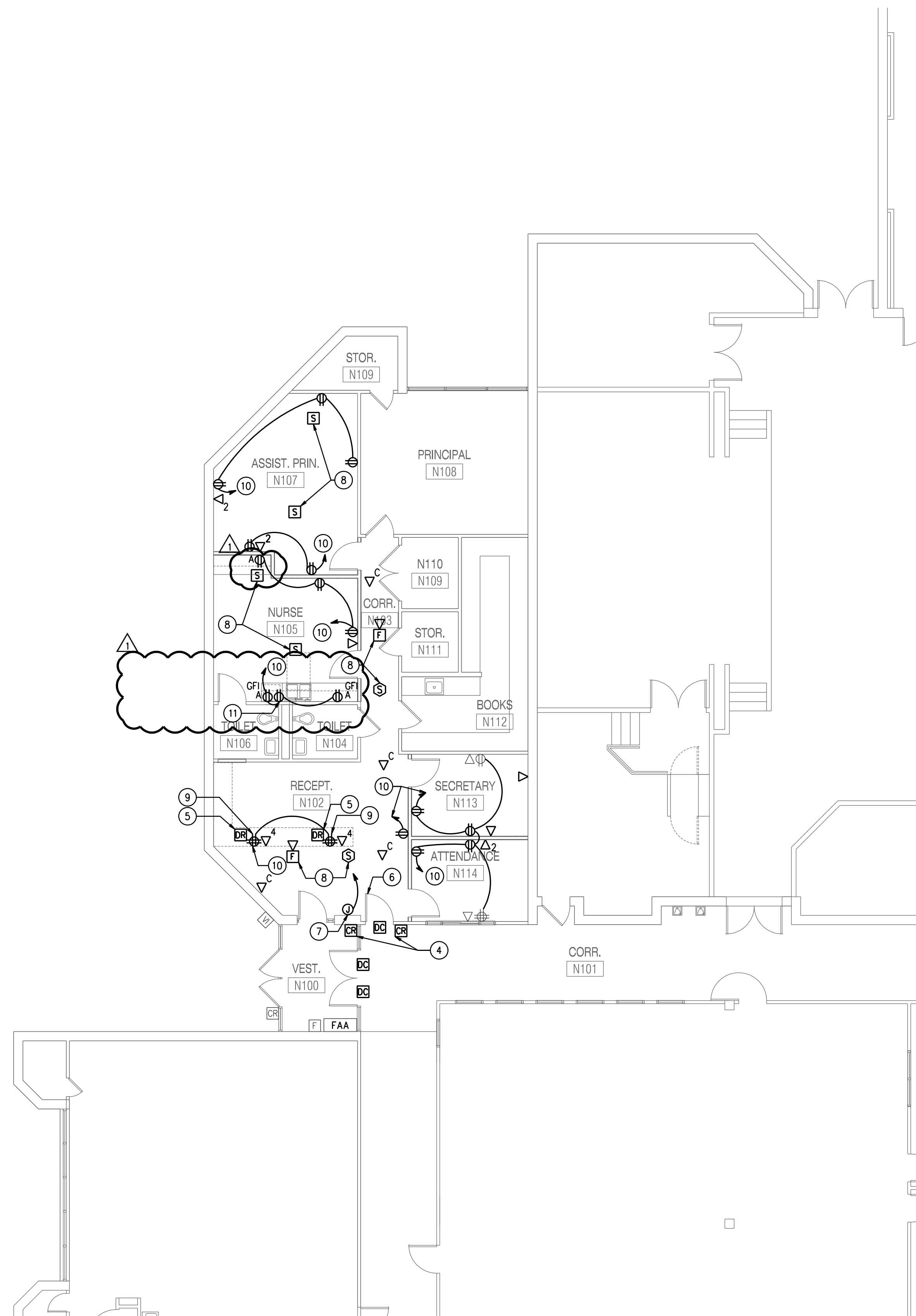
VLK ARCHITECTS

ARCHITECT

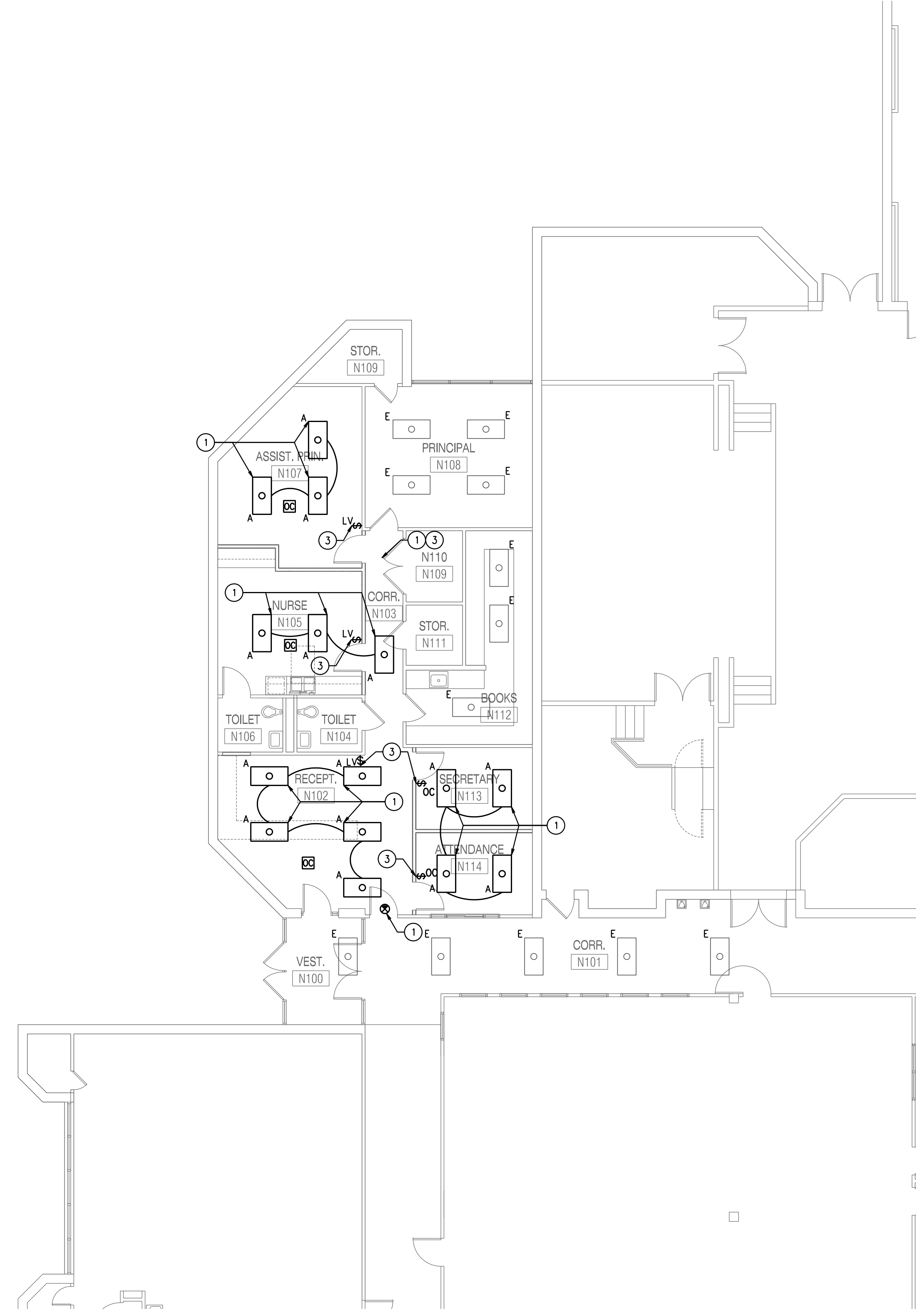
VLK Architects, Inc.
 2821 West 7th Street, Suite 300
 Fort Worth, Texas 76107
 Main Phone: 817.633.1600
 www.vlkarchitects.com

M.E.P. ENGINEER

Reed, Wells, Benson, & Co.
 12001 N. Central Expressway, Ste. 1100
 Dallas, Texas 75243
 Main Phone: 972.788.4222
 www.rwb.net



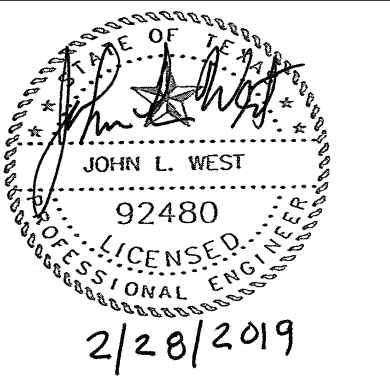
01 W.A. PORTER ELEMENTARY SCHOOL PLAN - ELECTRICAL
 SCALE: 1/8" = 1'-0"



02 W.A. PORTER ELEMENTARY SCHOOL PLAN - LIGHTING
 SCALE: 1/8" = 1'-0"

NOTES BY SYMBOL 'O':

- 1 EXTEND (2)#12 & (1)#12G IN 3/4" C TO EXISTING LIGHTING CIRCUIT IN EXISTING PANEL.
- 2 EXISTING FIRE ALARM DEVICE TO BE RELOCATED.
- 3 NEW LIGHTING CONTROL SYSTEM.
- 4 NEW ACCESS CONTROL CARD READER, VERIFY EXACT LOCATION PRIOR TO ROUGH-IN. REFER TO DETAILS FOR ADDITIONAL INFORMATION.
- 5 STAND-ALONE DOOR RELEASE BUTTON AT RECEPTION DESK FOR RELEASE OF DOOR INDICATED. PROVIDE ALL WIRING TO DOOR CONTROLLER. COORDINATE WITH DOOR HARDWARE INSTALLER.
- 6 DOOR TO BE CONTROLLED BY STAND-ALONE DOOR RELEASE BUTTON. DOOR LOCK HARDWARE & BUTTON RELEASE TO BE PROVIDED BY DOOR HARDWARE INSTALLER.
- 7 PROVIDE DEDICATED 120V, 20A CIRCUIT IN J-BOX ABOVE CEILING FOR ACCESS CONTROL DOOR HARDWARE POWER SUPPLY. EXTEND TO EXISTING 120V SPARE CIRCUIT BREAKER IN EXISTING 120V PANEL. COORDINATE EXACT LOCATION WITH ACCESS CONTROL SYSTEMS INSTALLER. COORDINATE ELECTRICAL REQUIREMENTS WITH POWER SUPPLY USED. ALL RACEWAY TO BE ROUTED CONCEALED WHERE POSSIBLE. WHERE NOT POSSIBLE, PROVIDE PAINTED STEEL SURFACE RACEWAY SYSTEM, COLOR AS SELECTED BY ARCHITECT.
- 8 APPROXIMATE LOCATION FOR FIRE ALARM DEVICES. CONFIRM LOCATION IS SUITABLE FOR DEVICE COVERAGE.
- 9 NEW ELECTRICAL DEVICES MOUNTED IN CASEWORK. EXTEND CONDUIT DOWN WALL AND THROUGH CASEWORK. COORDINATE WITH CASEWORK INSTALLER. VERIFY EXACT LOCATION OF DEVICES WITH ARCHITECT PRIOR TO ROUGH-IN.
- 10 EXTEND (2)#12 & (1)#12G IN 3/4" C TO EXISTING 120V-20A CIRCUIT IN EXISTING PANEL. CIRCUIT NO MORE THAN FOUR OUTLETS ON A CIRCUIT BREAKER.
- 11 LOCATE BELOW COUNTER FOR REFRIGERATOR.



ISSUED: FEBRUARY 28, 2019

REVISIONS

Revision No.	ADDENDUM NO.
1	ADDENDUM NO. 3

Director: JFK
 Designer: VLK
 Proj. Coord.: DJM
 Drawn By: RF/ST
 Quality Control: VLK

PROJECT NO.

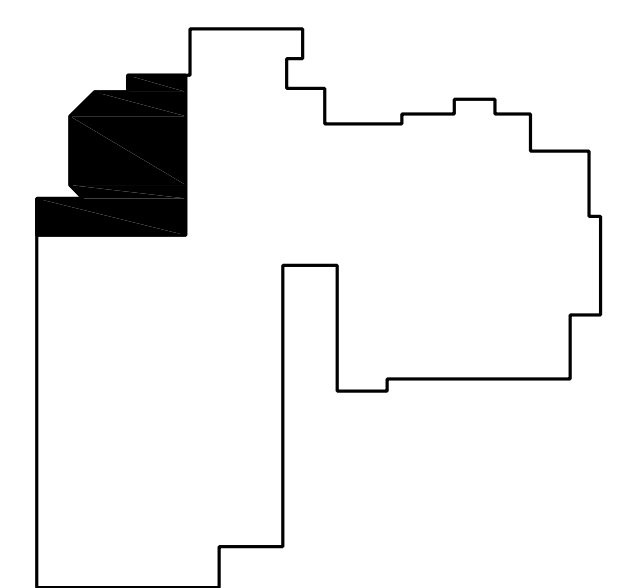
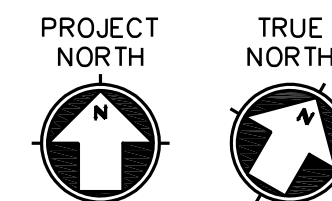
1886.00

SHEET TITLE

W.A. PORTER ELEMENTARY SCHOOL PLAN - ELECTRICAL

SHEET NO.

E132.21



KEY PLAN

Controlled Entry at 15 Campuses