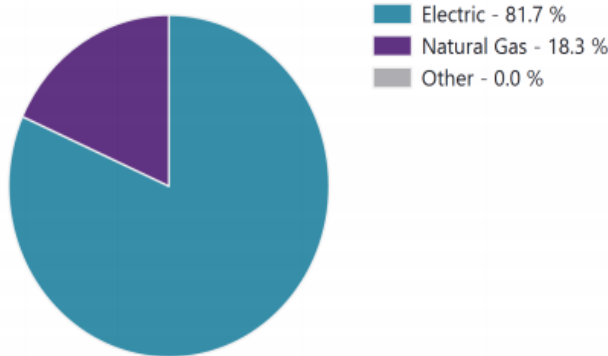
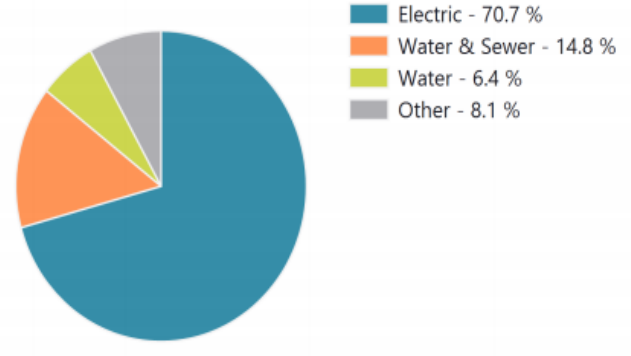


03-20 Energy Report

Energy Use Percentage



Cost Percentage



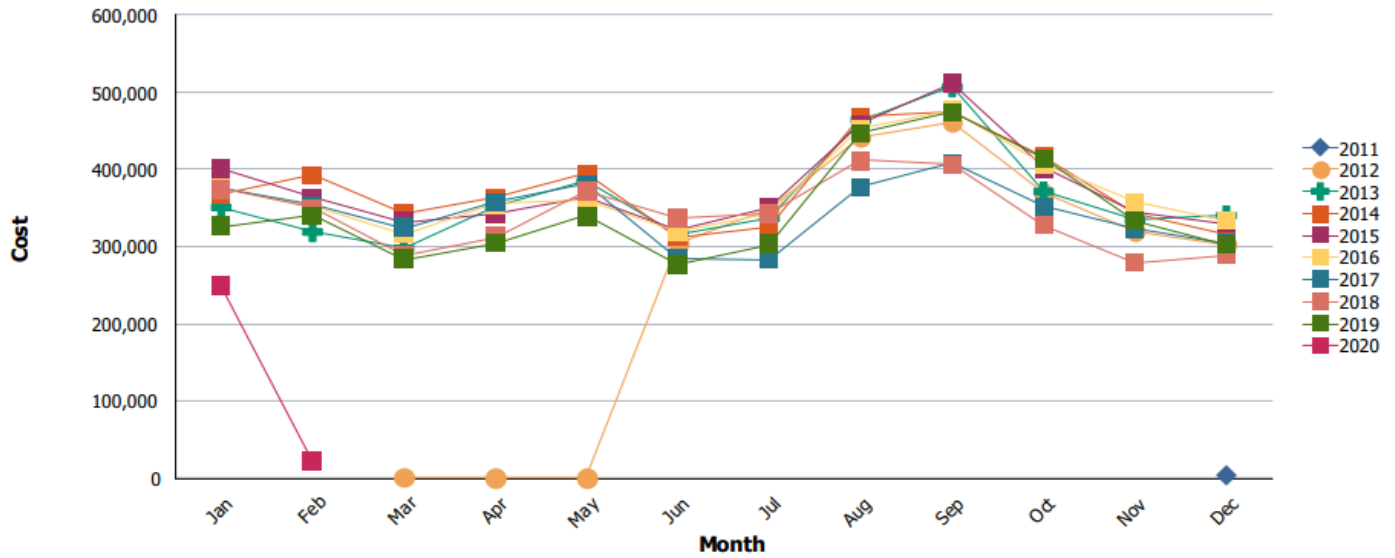
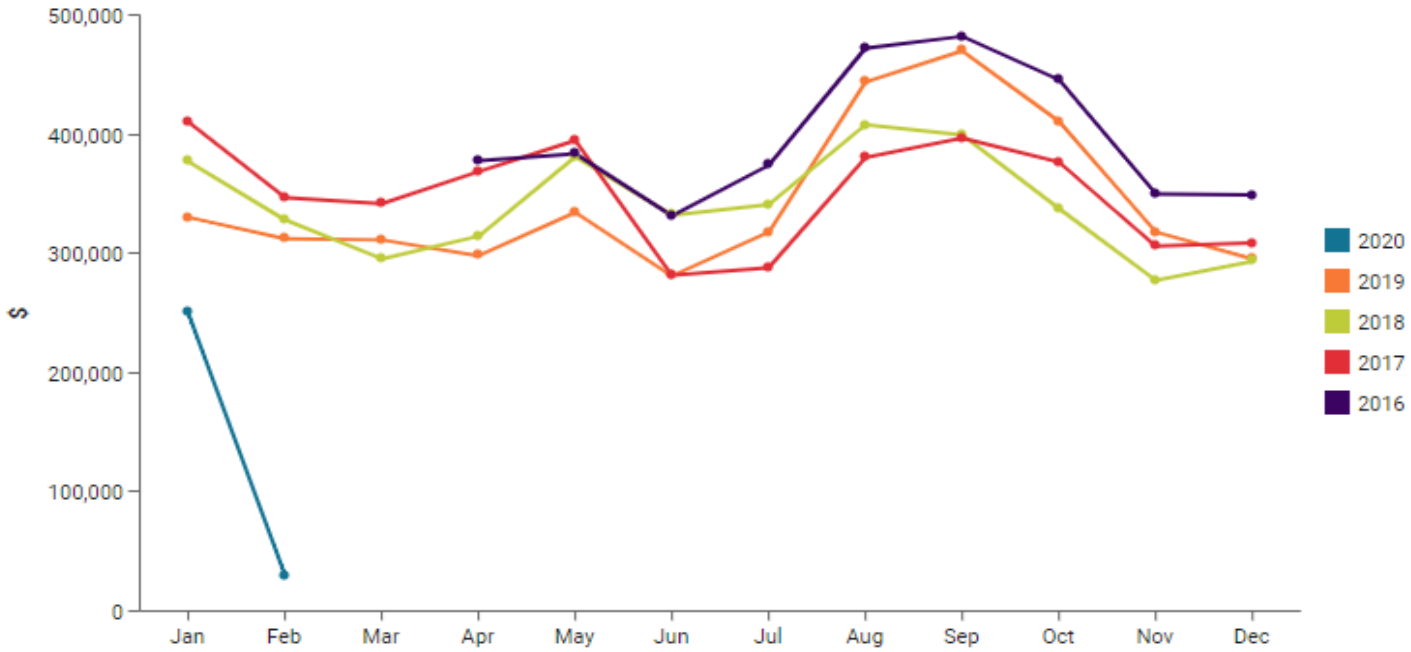
	Commodity Use		Energy Use		Cost
	Use	Unit Cost	Use	Unit Cost	Cost
Electric	29,473,329 kWh	\$0.090/kWh	100,562,999 KBtu	\$0.026/KBtu	\$2,649,224
Water & Sewer	33,723,687 Gal	\$0.016/Gal	0 KBtu	\$0.000/KBtu	\$556,277
Water	28,467 Kgal	\$8.380/Kgal	0 KBtu	\$0.000/KBtu	\$238,562
Storm Drainage					\$134,623
Natural Gas	219,207 CCF	\$0.603/CCF	22,578,327 KBtu	\$0.006/KBtu	\$132,141
Irrigation	2,501 Kgal	\$7.658/Kgal	0 KBtu	\$0.000/KBtu	\$19,154
Refuse					\$16,162
Fire Protection	5,183 Gal	\$0.264/Gal	0 KBtu	\$0.000/KBtu	\$1,368
Total			123,141,326 KBtu		\$3,747,511

Use and Cost Summary by Cost Center and Commodity

Birdville ISD - TX [BISD]

Commodity	#Days	Use	UOM	Demand	UOM	Cost	Cost/Day	Cost/Unit
Electric [ELECTRIC]	344	29,473,329.10	kWh	43,756.00	kW	\$2,649,224	\$7,701.23	\$0.090
Water [WATER]	371	28,466.99	Kgal			\$238,562	\$643.03	\$8.380
Refuse [REFUSE]	322					\$16,162	\$50.19	
Natural Gas [NATURALGAS]	374	219,207.06	CCF			\$132,141	\$353.32	\$0.603
Water & Sewer [WATERSEWER]	371	33,723,687.20	Gal			\$556,277	\$1,499.40	\$0.016
Irrigation [IRRIGATION]	367	2,501.18	Kgal			\$19,154	\$52.19	\$7.658
Storm Drainage [STORMDRAIN]	371					\$134,623	\$362.87	
Fire Protection [FIREPROTECTION]	367	5,183.00	Gal			\$1,368	\$3.73	\$0.264
Cost Center Total	378	123,141,326.07	KBtu	43,756.00	kW	\$3,747,511	\$9,914.05	\$0.030

Monthly Cost Trend



Year	Jan	Feb	Mar	Apr	May	Jun	Jul	Aug	Sep	Oct	Nov	Dec	Totals
2011	\$0	\$0	\$0	\$0	\$0	\$0	\$0	\$0	\$0	\$0	\$0	\$4,451	\$4,451
2012	\$0	\$0	\$1,562	\$1,170	\$1,060	\$303,512	\$348,314	\$441,085	\$461,101	\$368,717	\$320,215	\$302,737	\$2,549,474
2013	\$350,516	\$318,865	\$297,930	\$351,816	\$384,398	\$316,413	\$336,703	\$463,567	\$506,259	\$371,042	\$334,392	\$340,157	\$4,372,059
2014	\$368,706	\$392,723	\$343,310	\$364,054	\$394,617	\$311,270	\$325,495	\$468,616	\$474,283	\$417,092	\$334,041	\$314,601	\$4,517,807
2015	\$401,602	\$363,617	\$331,850	\$343,267	\$363,164	\$321,748	\$351,051	\$458,334	\$511,915	\$401,694	\$343,662	\$329,578	\$4,521,482
2016	\$376,205	\$352,631	\$316,258	\$355,356	\$359,071	\$318,800	\$342,715	\$453,219	\$476,826	\$407,019	\$358,076	\$333,004	\$4,449,179
2017	\$375,559	\$354,179	\$323,730	\$357,713	\$381,027	\$284,456	\$282,749	\$377,288	\$408,431	\$351,860	\$322,410	\$303,787	\$4,123,188
2018	\$374,696	\$350,016	\$287,561	\$312,452	\$372,261	\$337,414	\$343,193	\$411,579	\$406,101	\$327,181	\$278,361	\$288,120	\$4,088,935
2019	\$325,711	\$340,319	\$283,489	\$303,854	\$339,972	\$276,196	\$302,864	\$447,383	\$474,498	\$413,913	\$332,757	\$302,039	\$4,142,995
2020	\$248,649	\$21,897	\$0	\$0	\$0	\$0	\$0	\$0	\$0	\$0	\$0	\$0	\$270,546
Totals	\$2,821,644	\$2,494,244	\$2,185,690	\$2,389,682	\$2,595,571	\$2,469,808	\$2,633,085	\$3,521,070	\$3,719,414	\$3,058,518	\$2,632,915	\$2,518,474	\$33,040,116

Rank	Building Name	Building Code	Annualized Cost Per Area (\$/SqFt)	Annualized Cost (\$)	Annualized Use (KBtu)	Current Floor Area (SqFt)
1	Major Cheney at South Birdville Elementary School	109	\$1.37	\$64,429	1,629,362	46,976
2	Walker Creek Elementary School	121	\$1.33	\$115,657	2,601,898	86,963
3	Smithfield Middle School	046	\$1.33	\$150,702	4,663,909	113,671
4	David E. Smith Elementary School	102	\$1.32	\$56,148	1,498,041	42,639
5	Snow Heights Elementary School	108	\$1.30	\$58,309	1,126,950	44,963
6	North Ridge Middle School	047	\$1.25	\$140,074	3,918,766	112,357
7	W.T. Francisco Elementary School	103	\$1.20	\$55,205	1,817,509	46,138
8	John D. Spicer Elementary School	119	\$1.20	\$87,542	2,647,222	73,246
9	Academy at CF Thomas	116	\$1.15	\$89,968	3,299,098	78,100
10	North Ridge Elementary School	118	\$1.12	\$83,342	3,152,969	74,123
11	Birdville Center of Technology & Advanced Learning	980	\$1.11	\$116,482	4,197,249	105,382
12	Holiday Heights Elementary School	112	\$1.10	\$66,855	1,999,473	60,993
13	Watauga Elementary School	113	\$1.09	\$92,774	3,185,719	85,096
14	Alliene Mullendore Elementary School	105	\$1.06	\$47,871	1,278,888	44,954
15	Jack C. Binion Elementary School	104	\$1.05	\$92,472	2,632,369	88,061
16	North Oaks Middle School	044	\$1.01	\$105,914	3,247,255	104,363
17	Shannon High School	903	\$1.01	\$160,873	6,986,334	159,190
18	Richland Elementary School	106	\$0.98	\$50,612	1,291,819	51,689
19	Richland High School	002	\$0.97	\$372,269	12,471,143	382,574
20	Haltom High School	001	\$0.97	\$412,268	14,527,250	424,825
21	O.H. Stowe Elementary School	110	\$0.94	\$82,958	2,491,097	88,061
22	Grace Hardeman Elementary School	114	\$0.94	\$82,180	2,290,790	87,874
23	Richland Middle School	043	\$0.93	\$111,321	3,514,669	119,310
24	Haltom Middle School	041	\$0.92	\$124,705	3,331,374	135,641
25	Birdville High School	010	\$0.92	\$325,632	11,459,456	354,354
26	Smithfield Elementary School	107	\$0.91	\$53,535	1,892,589	58,892
27	Watauga Middle School	045	\$0.88	\$104,449	3,413,831	118,644
28	Foster Village Elementary School	117	\$0.84	\$57,092	2,033,199	67,881
29	Birdville Animal Science Complex	907	\$0.83	\$20,005	1,329,834	24,000
30	Green Valley Elementary School	120	\$0.83	\$52,914	1,687,579	63,695
31	North Richland Middle School	042	\$0.81	\$141,402	4,834,469	174,500
32	Academy at West Birdville	111	\$0.80	\$74,325	2,214,591	92,447
33	W.A. Porter Elementary School	115	\$0.75	\$54,424	1,763,957	72,474
34	Birdville Elementary School	101	\$0.75	\$65,843	2,322,024	88,000
Total			\$1.00	\$3,770,552	122,752,685	3,772,076