

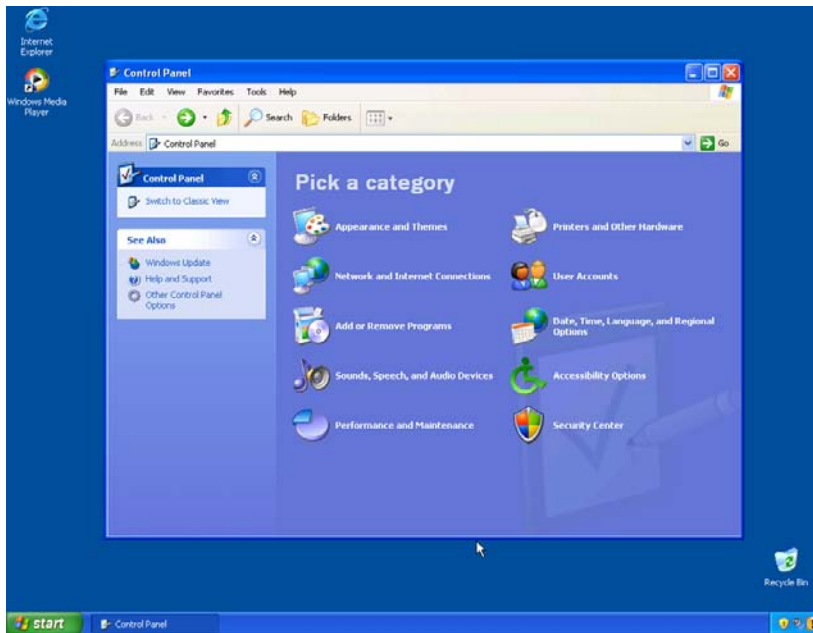
## Printer - connecting a PC to a local printer

### Local printing - connecting a PC to a local printer

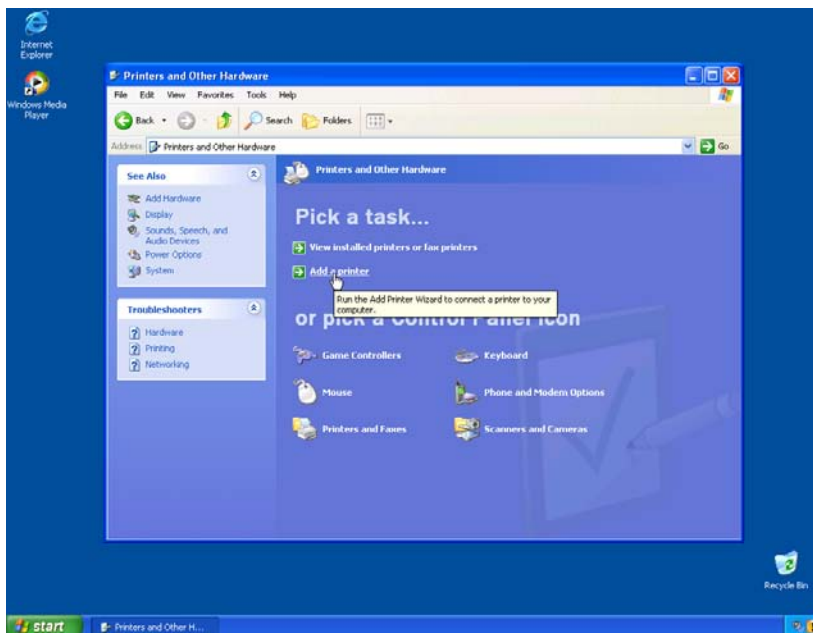
Click on the Start Menu.

Click on Control Panel.

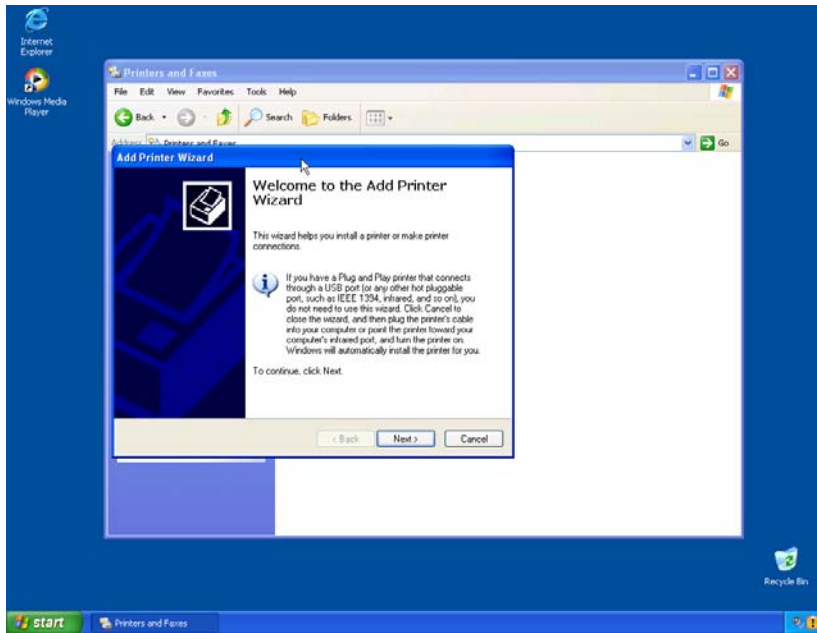
Click on Printers and other Hardware.



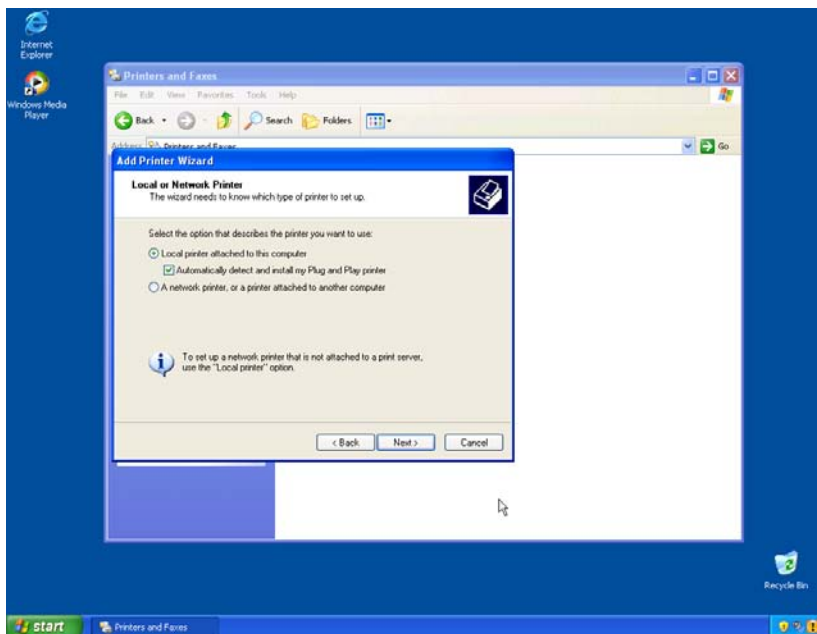
Click on Add a Printer.



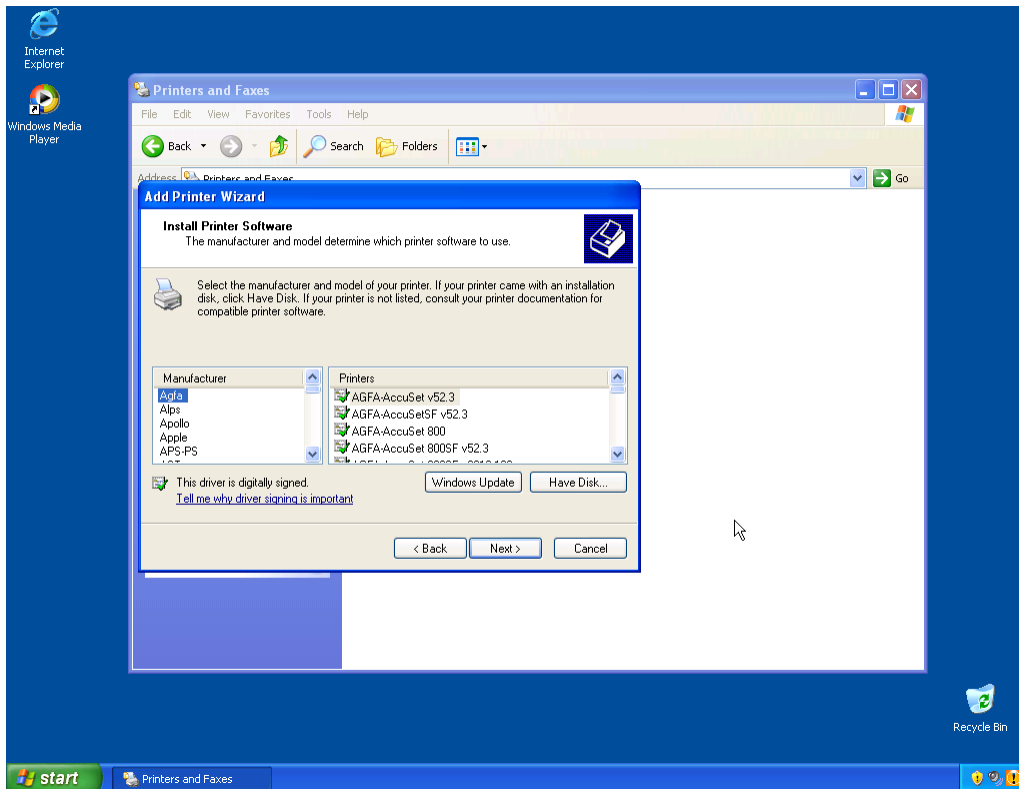
The Welcome to the Add Printer Wizard starts. Click Next



Select LOCAL printer, and uncheck Automatically detect and install my Plug and Play printer. Make sure printer is plugged in and turned on. Click Next.



If Windows cannot automatically detect the printer, select Use the following port: LPT1 (Recommended Printer Port). Click Next.



A Printer selection window opens. Select MANUFACTURER in left box, select MODEL in right box (the Lexmark, OPTRA will work on all laser Lexmark Optras). Select Do Not Share printer. Select to keep the driver if it is already on your machine. Select Have disk if it came with your printer. Select whether you want this to be your default printer. Select Print Test Page. .