

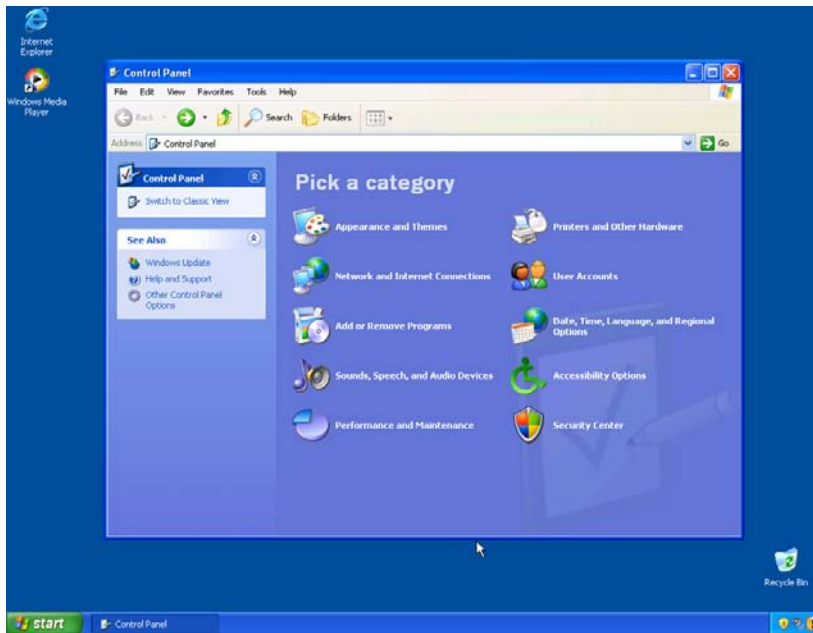
Printer - connecting a PC to a network printer (hostname printing)

Hostname printing - connecting a PC to a network printer

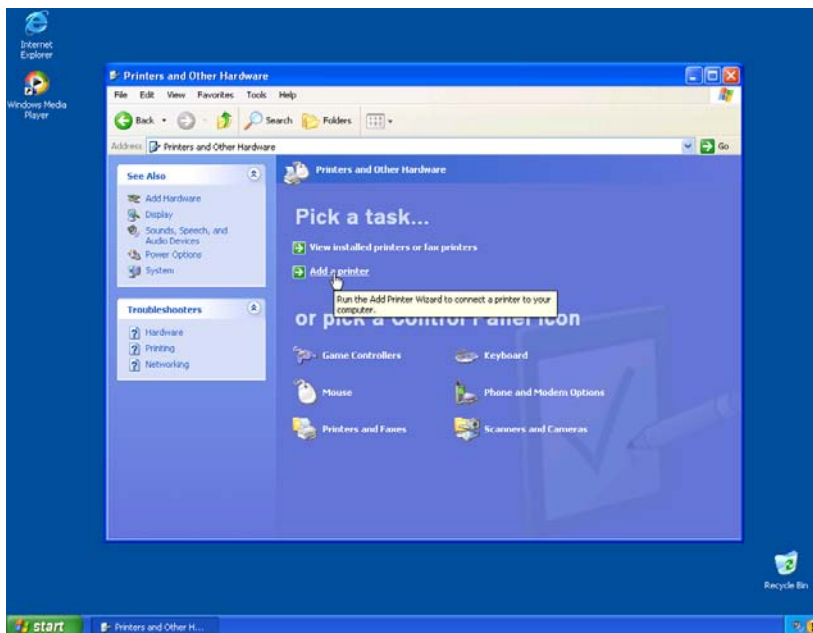
Click on the Start Menu.

Click on Control Panel.

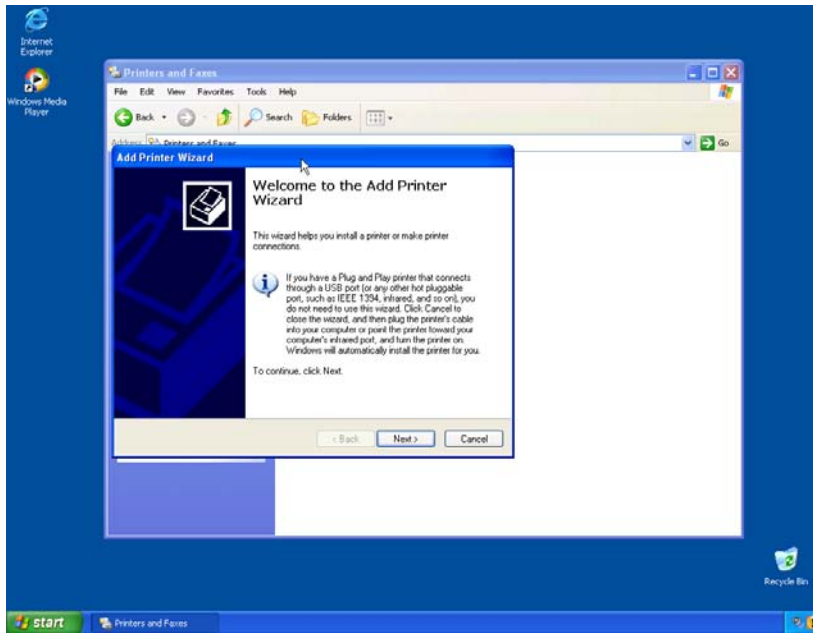
Click on Printers and other Hardware.



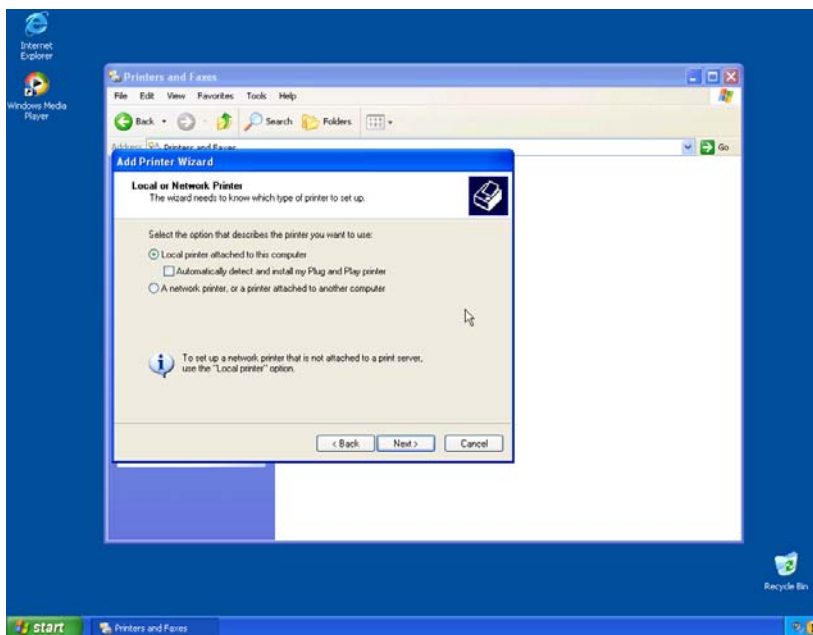
Click on Add a Printer.



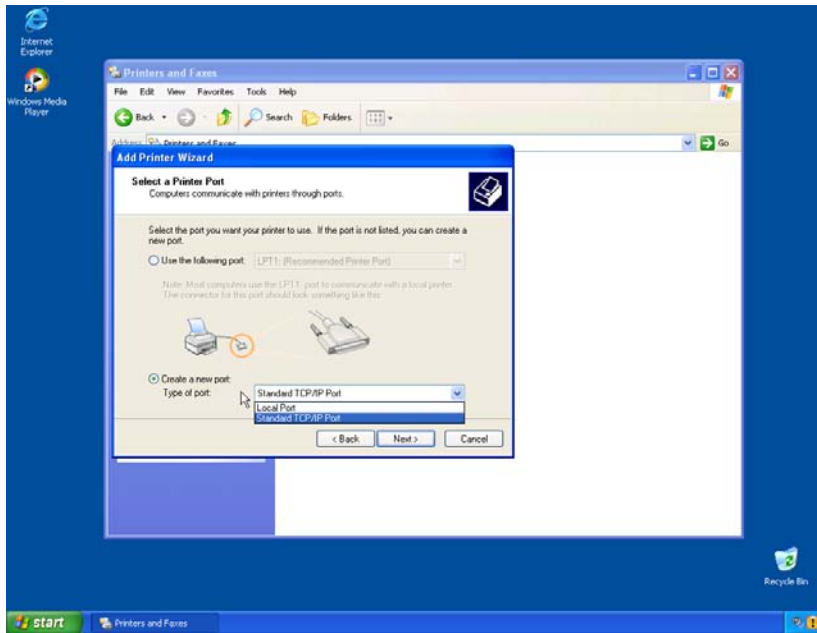
The Welcome to the Add Printer Wizard starts. Click Next



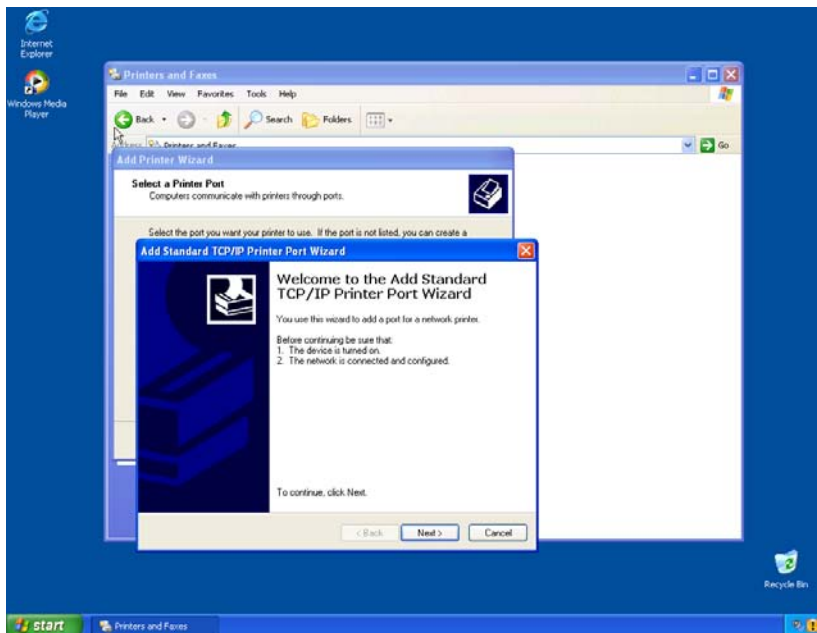
Select LOCAL printer, and uncheck Automatically detect and install my Plug and Play printer. Click Next.



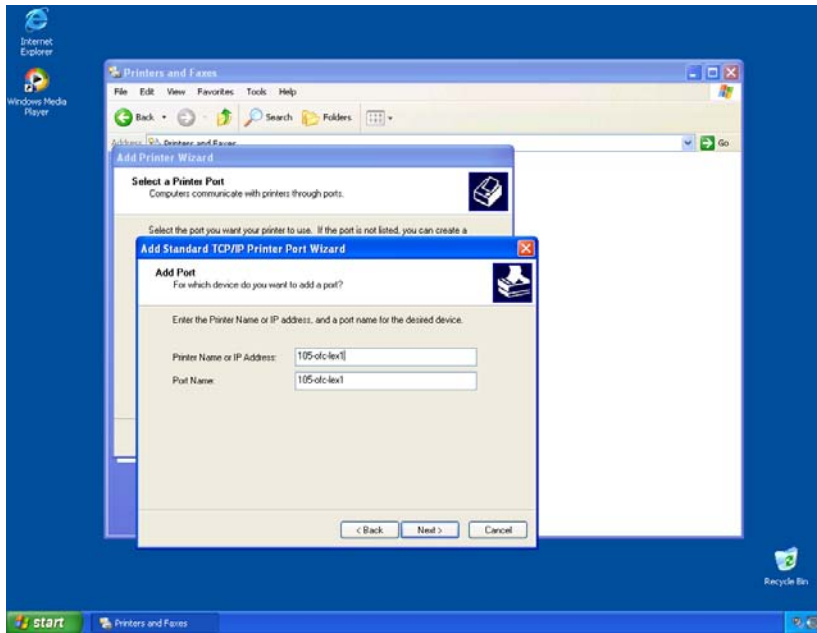
Select Create a new port (bottom choice) - in the dropdown select STANDARD TCP/IP port. Click Next.



The add port wizard kicks off. Click Next.



Enter the printer name in the Printer Name or IP Address box, e.g. 105-OFC-LEX1. Click Next. Click Finish.



A Printer selection window opens. Select MANUFACTURER in left box, select MODEL in right box (the Lexmark, OPTRA will work on all laser Lexmark Optras). Select Do Not Share printer. Select to keep the driver if it is already on your machine. Select whether you want this to be your default printer. Select Print Test Page. .