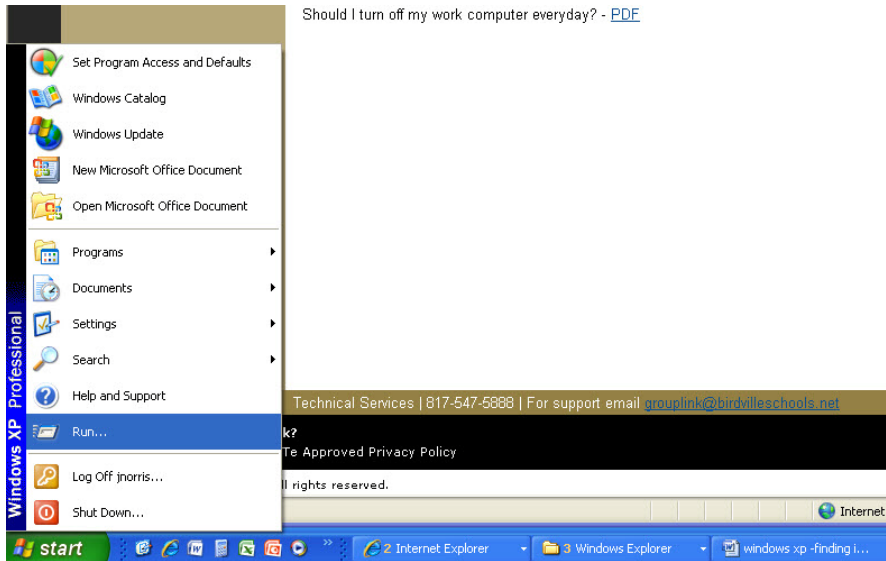
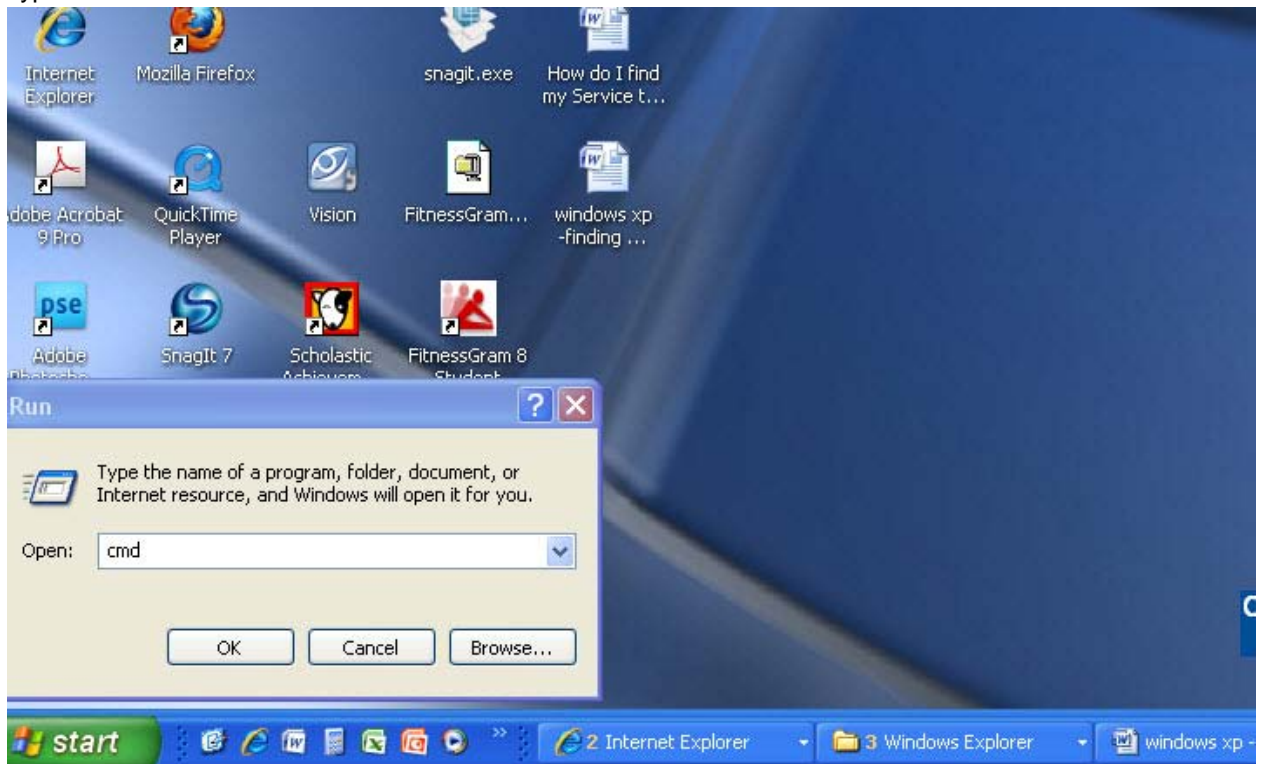


How do I find my IP Address?

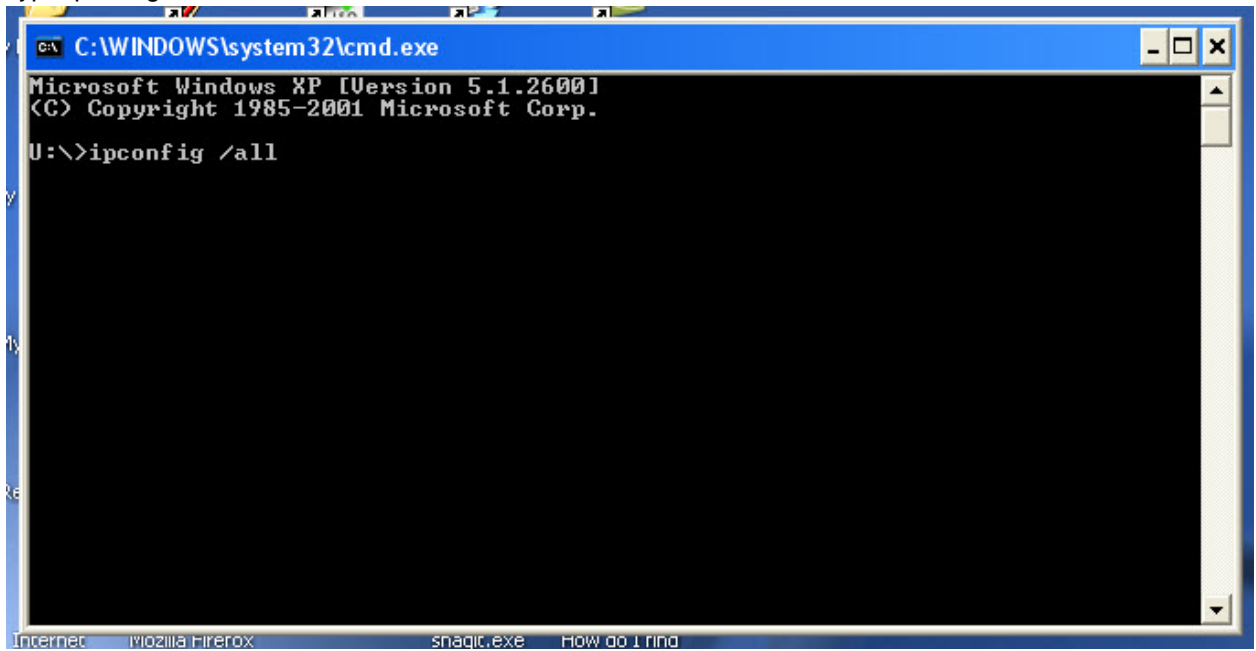
- 1) Select start button
- 2) Select run



- 3) Type in cmd



4) Type ipconfig /all



```
C:\WINDOWS\system32\cmd.exe
Microsoft Windows XP [Version 5.1.2600]
(C) Copyright 1985-2001 Microsoft Corp.
U:\>ipconfig /all
```

The screenshot shows a Windows XP desktop environment. A command prompt window is open, displaying the command 'ipconfig /all' and its output. The taskbar at the bottom shows several open applications: Internet Explorer, Mozilla Firefox, snagit.exe, and How do I find... The command prompt window title bar reads 'C:\WINDOWS\system32\cmd.exe'. The output of the command is currently blank, indicating that the command has been entered but the results have not yet been displayed.

- 5) Your IP address will be listed about the 4th line down.

```
C:\WINDOWS\system32\cmd.exe
Controller #2
Description . . . . . : Broadcom NetXtreme 57xx Gigabit Cont
Physical Address . . . . . : 00-15-C5-23-B6-8F
Dhcp Enabled . . . . . : Yes
Autoconfiguration Enabled . . . . . : Yes
IP Address . . . . . : 10.240.10.46
Subnet Mask . . . . . : 255.255.254.0
Default Gateway . . . . . : 10.240.10.1
DHCP Server . . . . . : 10.240.208.12
DNS Servers . . . . . : 10.240.208.12
                        10.240.208.11
Primary WINS Server . . . . . : 10.240.208.12
Secondary WINS Server . . . . . : 10.240.208.11
Lease Obtained . . . . . : Friday, November 12, 2010 9:47:08 AM
Lease Expires . . . . . : Saturday, November 20, 2010 9:47:08 AM

Ethernet adapter Wireless Network Connection:
Connection-specific DNS Suffix . :
Description . . . . . : Intel(R) PRO/Wireless 3945ABG Networ
Connection
Physical Address . . . . . : 00-13-02-C5-98-07
Dhcp Enabled . . . . . : Yes
Autoconfiguration Enabled . . . . . : Yes
Autoconfiguration IP Address . . . . . : 169.254.36.223
Subnet Mask . . . . . : 255.255.0.0
Default Gateway . . . . . :

C:\>
```