

Work Smarter, Not Harder: Creating a Quality Secondary Classroom

Rebecca Shoemaker, Lauren Davis, and Allison Hawk

Weatherford High School Ninth Grade Center
14th Annual Quality Education Conference
SESM13

Learning Objectives

At the conclusion of this session, attendees will have knowledge of :

- tools used to create a classroom environment that focuses on the learning process and performance excellence
- how to use data to develop and adjust curriculum
- ways to help students discover the power of data and establish effective and interactive communication

Getting Started: Creating a Quality Secondary Classroom

- Be prepared for change.
- “The way we have always done things” replaced by “the way we should do things”
- Become familiar with the use of a variety of quality tools
- Gather data and set goals

Quality Tools

- Baseline and post testing
- Plus/Delta
- Issue Bin
- Surveys
- Mission Statements

Quality Tools

- Affinity Diagrams
- Flowcharts
- Relations Diagram
- Radar Chart
- Scatter Diagrams
- Student Data Folders

Quality Tools

- Baldrige
- Enthusiasm for Learning Surveys
- Light Voting
- PDSA
- Student-led Conferences

How We Started.....

- Mission Statements
 - District
 - School
 - Teacher
 - Classroom

Classroom Mission Statements

- *As a class, we will broaden our horizons by learning about cultures and physical features using data in a challenging way. By using cooperation and teamwork, we will combine our intellect to be prompt in completing work. We will reach our goals by staying on task, talking less, and listening more.*

Mission Statements

Plus/Delta

- What is it
- Why do we use it
- When do we use it
- Experience it
 - What helped you learn in this class?
 - What changes would have helped you learn more?

Affinity Diagram

- What is it
- Why do we use it
- When do we use it
- Experience it
 - Use data from Delta
 - 70% of students mentioned dissatisfaction with research projects

Affinity Diagrams cont.

- Delta responses divided into 4 main categories
 - Hated Research Projects
 - Need more time to complete research projects
 - Don't know how to complete research projects
 - Learned little from research projects

Relations Diagram

- What is it
- Why do we use it
- When do we use it
- Experience it
 - Root cause:
Lack of knowledge
of how to conduct
research

PDSA (Plan, Do, Study, Act)

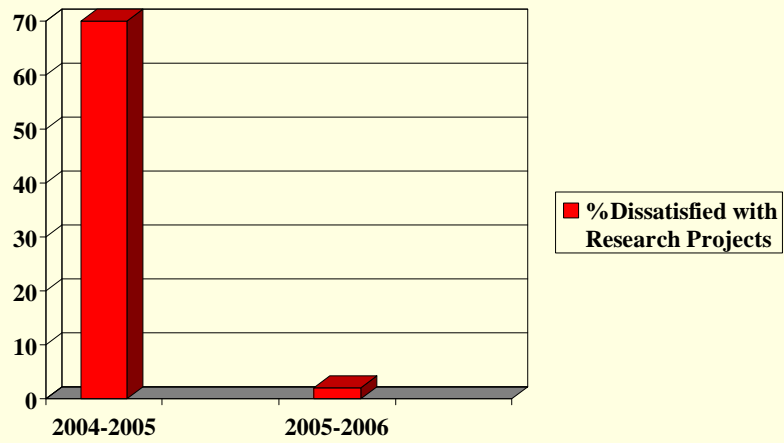
- What needs to be improved and what specific outcome needs to occur?
- What is the current condition and data that supports the need for improvement?
- Who are the direct customers of the improvement and how will this benefit them?

PDSA

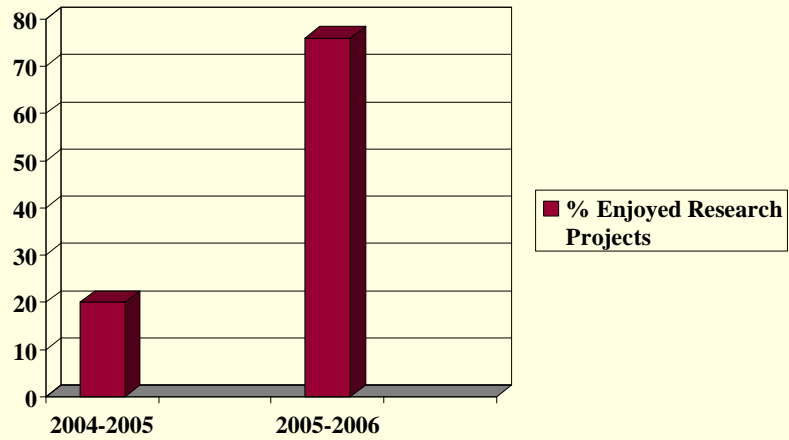
Arrow Chart

- How to Research a Topic

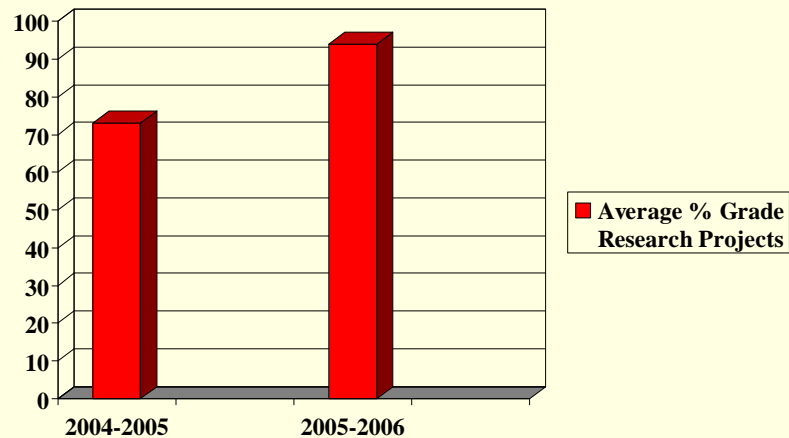
Results



Results



Results



Curriculum Development and Adjustment

- Identify problems using Plus/Delta
- Affinity Diagram
- Relations Diagram
 - Establish root cause
- Create a PDSA
- Follow up
 - Gather Data

Student Data Folders

- Helps students discover the power of data
- Creates an environment promoting effective and interactive communication
- Allows student to make decisions based on fact

World Geography Student Data Folder Contents

- Graphs
 - Weekly Grade Average
 - Quiz Average
 - Exam Average

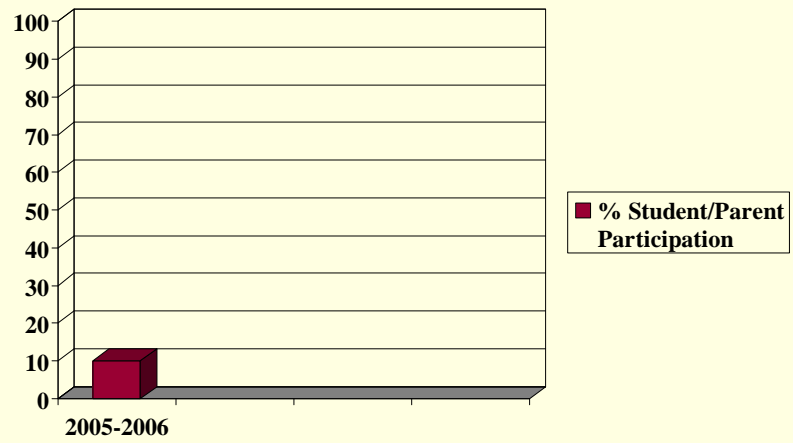
Student Data Folders Cont.

- Attendance
- Assignment Chart
- Radar Chart
- Grading Policy

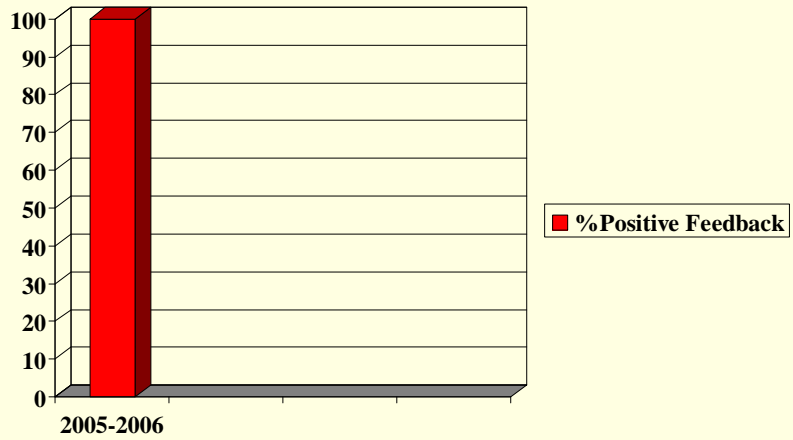
Student-led Conferences

- Establishes communication and cooperation between:
 - Student and parents
 - Student and teacher
 - Teacher and parents

Results



Results



Teacher Efficacy

- Not all will “buy in” at first
- Small steps can be best
- Optional is a good beginning
- Training is a must
- Rewards are great

Questions and Answers
