

The logo consists of the letters 'A', 'C', and 'E' in a bold, sans-serif font. The 'A' is red, the 'C' is blue, and the 'E' is green. Each letter has a small black dot to its right, creating a sequence of 'A.C.E.'.

## **A.C.E.ing the Questions! Short Answer Responses**

**Lonna Andrews  
6<sup>th</sup> Grade Language Arts  
Camino Real Middle School  
Las Cruces, New Mexico**

### *Purpose*

- Demonstrate the A.C.E. process
- Compare A.C.E. to traditional question responses
- Model a process that can be taken to school or classroom tomorrow

## ACE Presentation:

- Plan

Share my ACE journey.

- Do

Look at the process I experienced with my students in the first four weeks of teaching the process.

- Act

- \_\_\_ Plan Worked
- \_\_\_ Need new plan

- Study

+ Δ

## Temperature check

(Consensogram)

- Please place your sticky dot on the chart to indicate your answer.

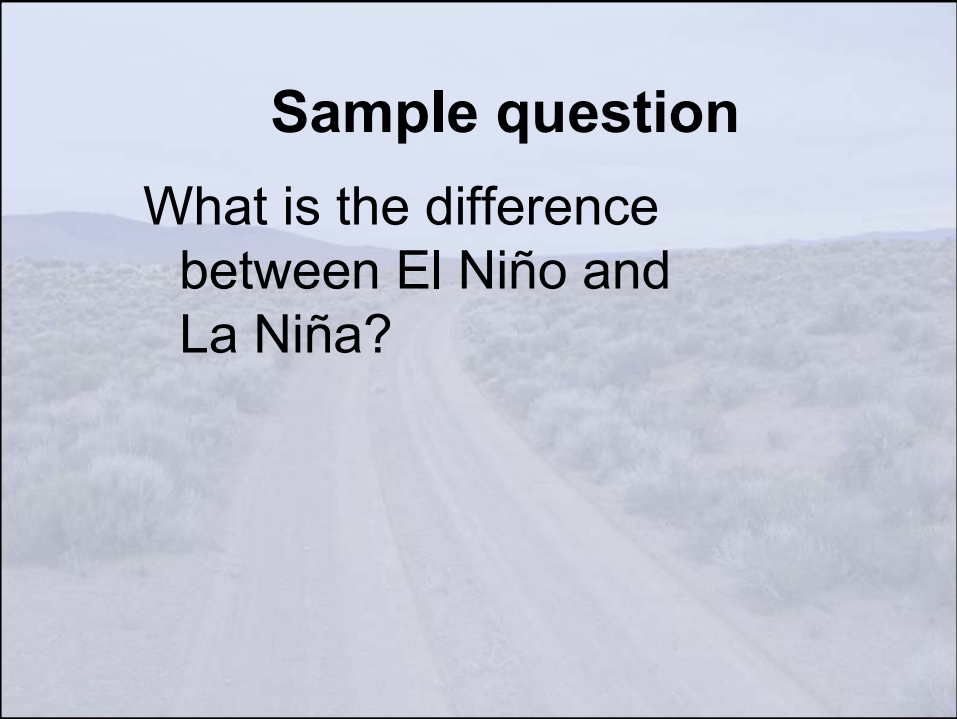
“Teaching students to elaborate on short-answer response questions is...”

- Easy
- Difficult
- Oh, we have to teach it?



## **Let's try it out!**

Please read the sample passage  
“El Niño” found on page # of your  
packet



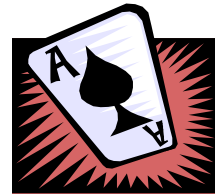
## **Sample question**

What is the difference  
between El Niño and  
La Niña?

## Model Answer

- The difference between El Niño and La Niña is the temperature of the surface of the eastern Pacific Ocean. In an El Niño situation the surface water in the eastern Pacific Ocean gets unusually warm and in a La Niña the waters get very cold. During the last El Niño, I remember the weather patterns also changed throughout the United States.

A.C.E.



**A**...Answer the question!

**C**...Cite evidence from the text!

**E**...Expand your answer!

## To the Classroom

- |   |   |  |   |
|---|---|--|---|
| <ul style="list-style-type: none"><li>• Plan<ul style="list-style-type: none"><li>– Utilize Posters<ul style="list-style-type: none"><li>• How am I in A.C.E.ing my reading quizzes?</li><li>• A.C.E. Rubric</li></ul></li><li>– Teach A.C.E.</li></ul></li></ul> | → | <ul style="list-style-type: none"><li>• Do<ul style="list-style-type: none"><li>– Day 1<ul style="list-style-type: none"><li>• Model ACE with game</li><li>• Poster in classroom</li></ul></li><li>– Day 2<ul style="list-style-type: none"><li>• Short answer question</li><li>• ACE as class</li><li>• Post/graph results</li></ul></li><li>– Day 3<ul style="list-style-type: none"><li>• Short answer question</li><li>• Post/graph results</li></ul></li><li>– Day ....</li></ul></li></ul> |   |
| ↑   |   |  | ↓ |
| <ul style="list-style-type: none"><li>• Act<ul style="list-style-type: none"><li>– ___ Working</li><li>– <u>X</u> Need new plan</li></ul></li></ul>   | ← | <ul style="list-style-type: none"><li>• Study<ul style="list-style-type: none"><li>– Study results</li><li>– Individual and class PDSA</li></ul></li></ul>   |   |

## A.C.E.



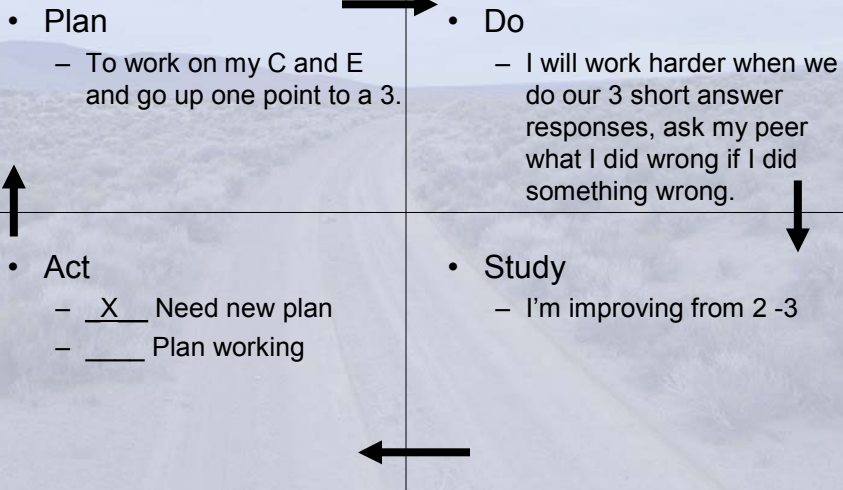
**A**...Answer the question!

**C**...Cite evidence from the text!

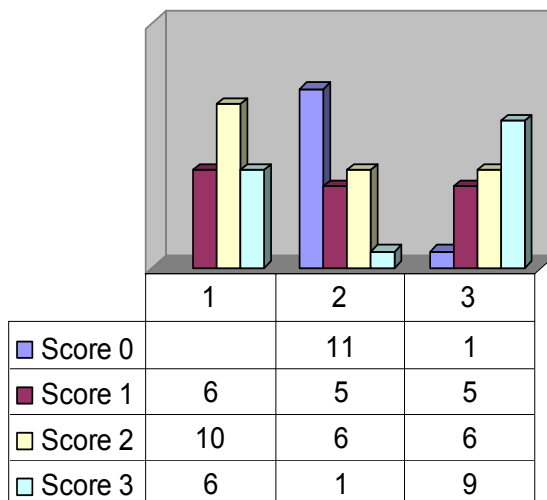
**E**...Expand your answer!



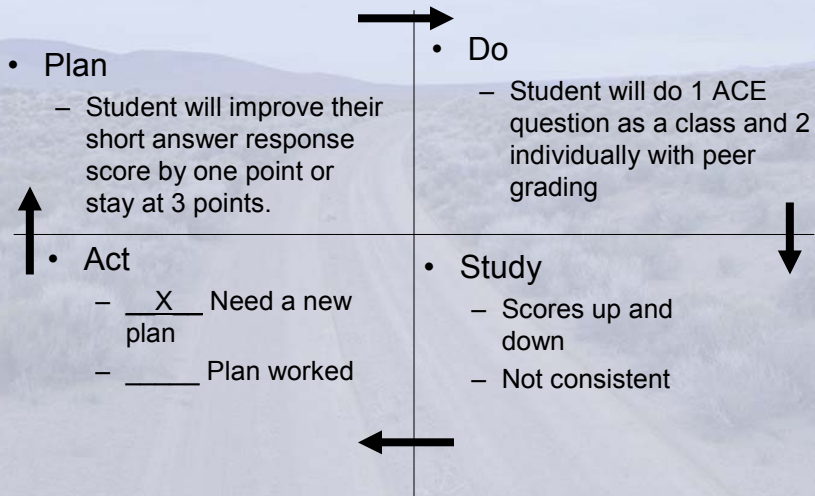
# Student "D" PDSA 1



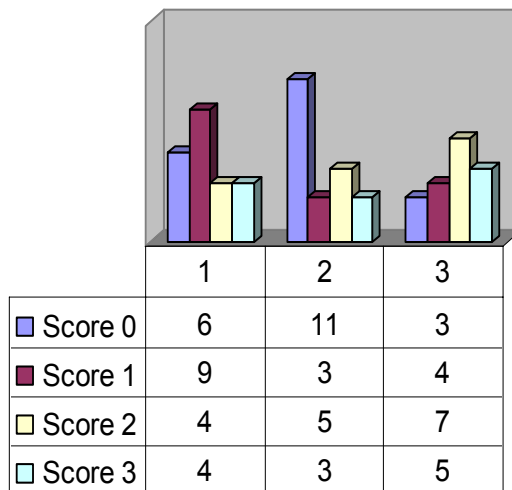
## 1 & 2 Block- ACE Scores



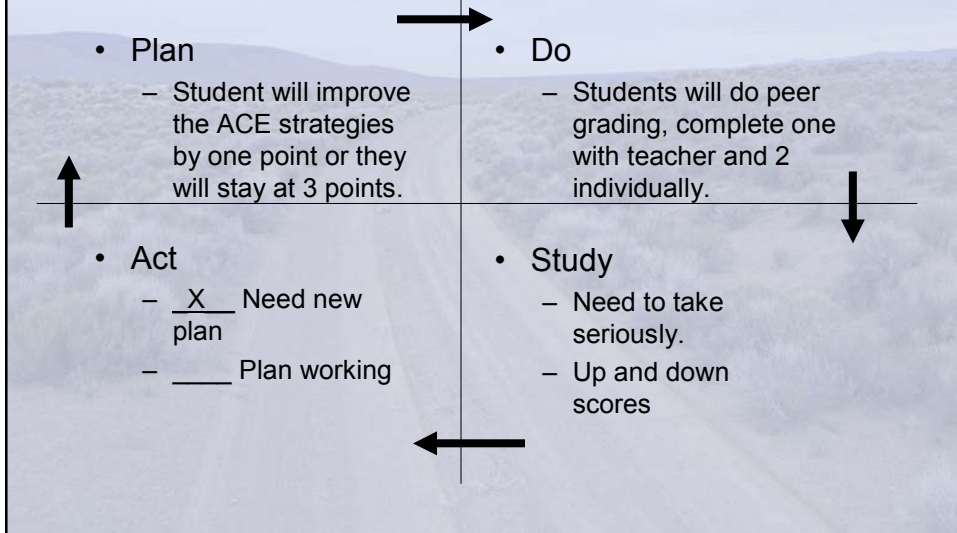
# 1 & 2 Block - First Cycle PDSA



## 3 & 4 Block- ACE Score



## 3 & 4 Block- First Cycle PDSA



## Example student A.C.E.ed Answers

- **Question: What can you tell about the Farmer's character?**

A – The farmer was a very hard working man, the only problem is he's poor.

C – When the cow got an infection and James told him to rub the udders as much as possible he rubbed them all night.

E – I think the farmer will rub the cow's udder so much it will get better.

A – The farmer is a person who cares about his cow.

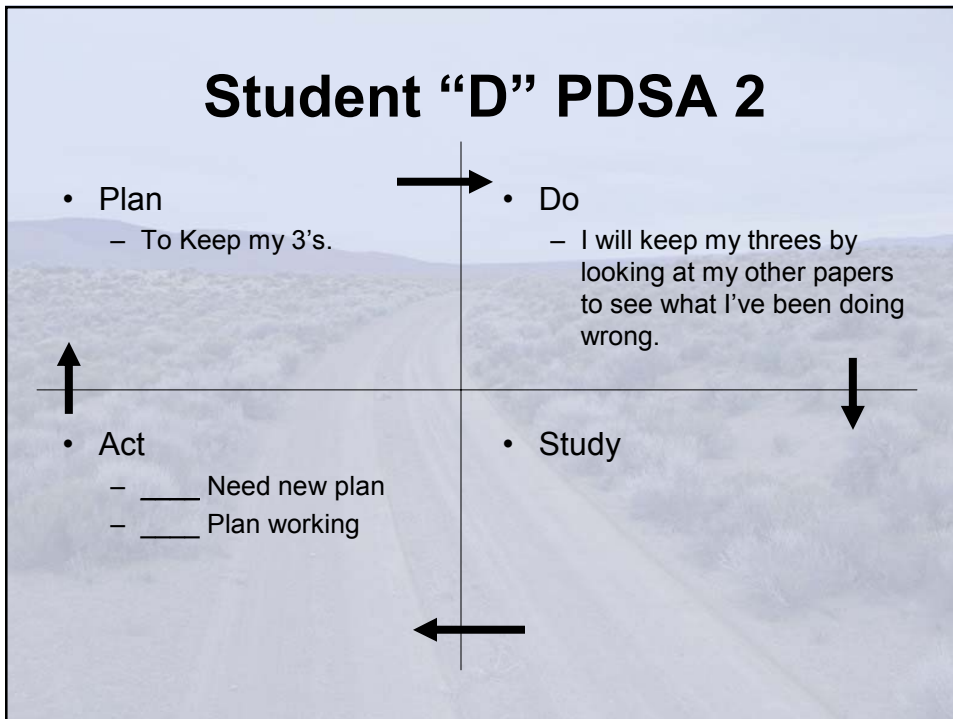
C – The farmer rubs the udder of the cow like the doctor said and he does it day and night till he has to go to work.

E – The farmer isn't a kind of person who is self centered he cares about his family and his animals.

## Student "D" Chart

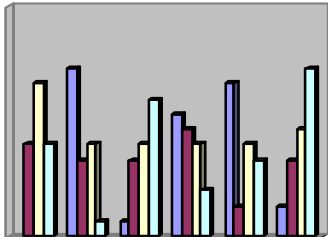
Question	Date	A	C	E	Points
Bill Monroy	1/24	Yes	Yes	Not yet	2
Farmer	1/25	Yes	Not yet	Yes	2
El Nino La Nina	1/26	Yes	Yes	Almost	2
John Colture	1/30	Yes	Yes	Almost	2
Dynasty	2/3	Yes	Yes	Yes	3
Phoenix	2/8	Yes	Almost	Yes	2
Gerbil Cage	2/10	Yes	Yes	Yes	3

## Student "D" PDSA 2



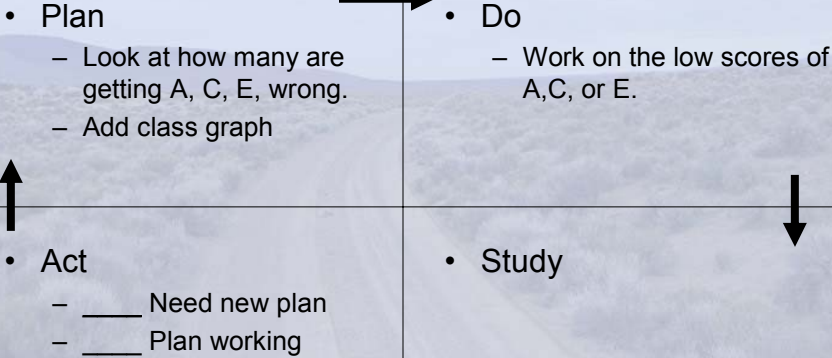
# 1&2 Block- ACE Scores

- score 0
- score 1
- Score 2
- Score 3

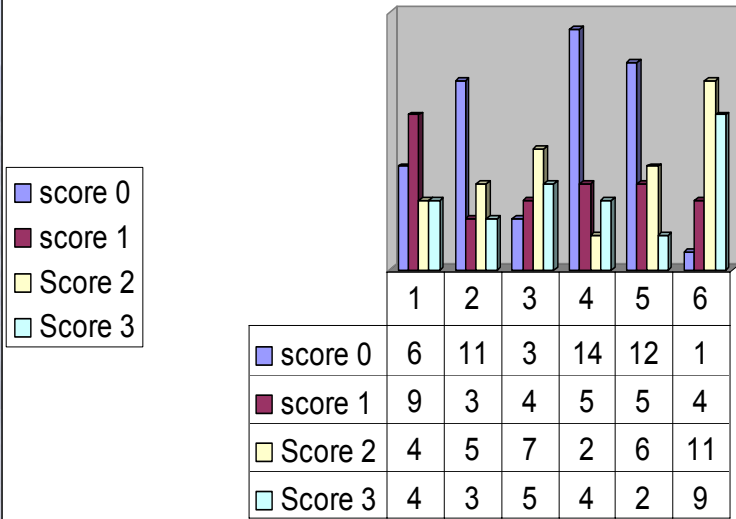


	1	2	3	4	5	6
■ score 0		11	1	8	10	2
■ score 1	6	5	5	7	2	5
■ Score 2	10	6	6	6	6	7
■ Score 3	6	1	9	3	5	11

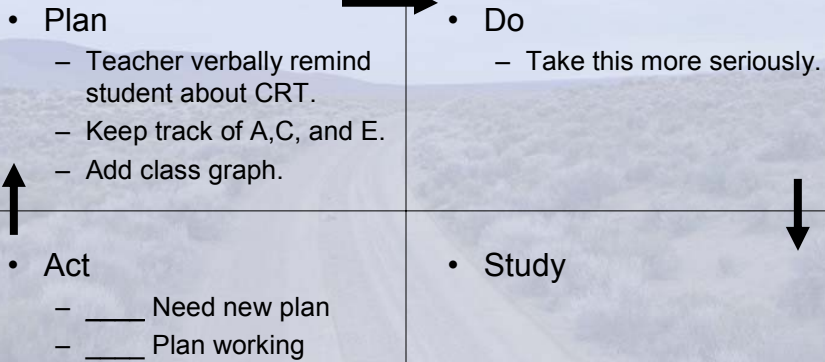
# 1 & 2 Block- Second Cycle PDSA



### 3 & 4 Block ACE Scores



### 3 & 4 Block- Second Cycle PDSA



## Student example

- **Question: How does a new Phoenix come into existence?**

A - A new Phoenix is born from the ashes of the old one.

C - It makes a nest and when it dies it sets on fire and from the ashes there is a worm and the worm turns into a phoenix.

E - There is a phoenix in Harry Potter.

A – It has never existed because it only lives in the imagination of people.

C – Unfortunately for bird watchers, the Phoenix only lives in the minds and imaginations of Greeks and Egyptians.

E – I wonder if the Phoenix could still really be a creature on this earth even though it only exists in the minds of people?

## Temperature Check

+

Δ

## ACE Presentation Plan:

- Plan

Guide you through the process so that you will have a useable plan and tools to take to school or staff

- Do

Apply ACE strategy

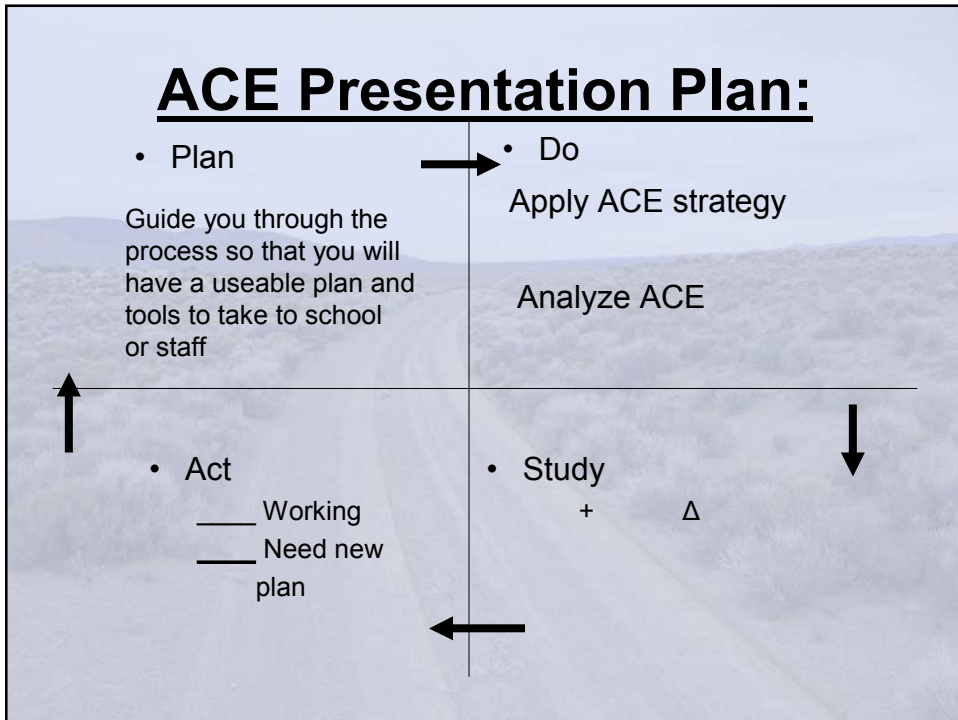
Analyze ACE

- Act

— Working  
— Need new plan

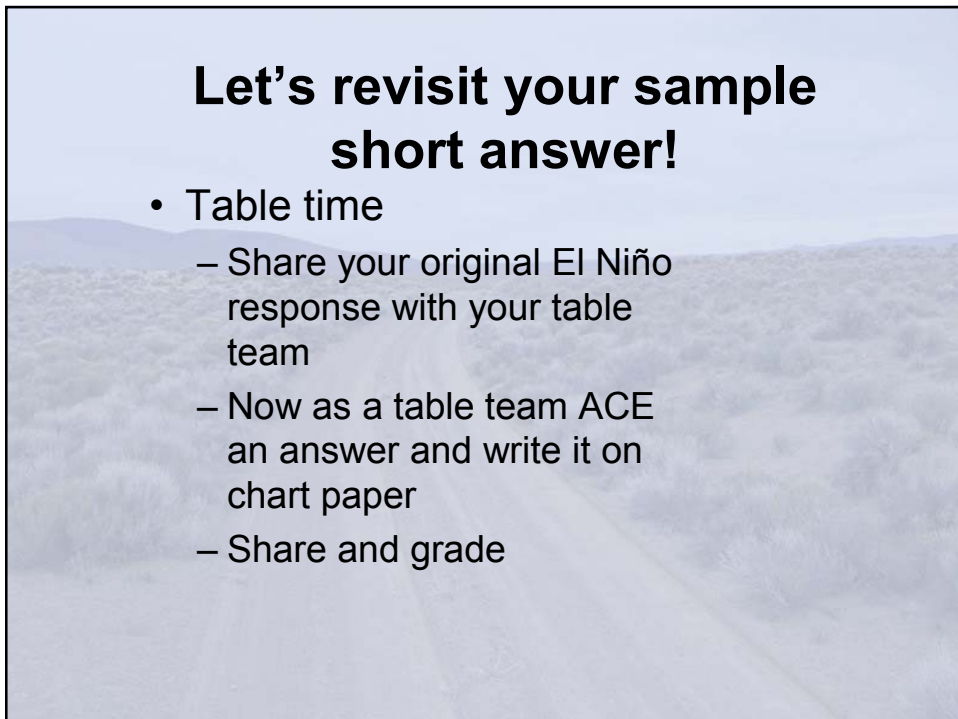
- Study

+  $\Delta$



## Let's revisit your sample short answer!

- Table time
  - Share your original El Niño response with your table team
  - Now as a table team ACE an answer and write it on chart paper
  - Share and grade



# A.C.E.



**A**...Answer the question!

**C**...Cite evidence from the text!

**E**...Expand your answer!

## Model Answer

- The difference between El Niño and La Niña is the temperature of the surface of the eastern Pacific Ocean. In an El Niño situation the surface water in the eastern Pacific Ocean gets unusually warm and in a La Niña the waters get very cold. During the last El Niño, I remember the weather patterns also changed throughout the United States.

## ACE the Question Short-Answer Response

- **A** - Answer the question in a complete sentence **correctly**.
- **C** - Cite evidence from the passage that **supports your answer**.
- **E** - Expand your answer – **add more**.

## A.C.E. Rubric

Answer	
Yes! (1 Point each)	Answered the question correctly in a complete sentence.
Almost	Answered the question.
Not yet	Almost got the correct answer.
Not correct	Incorrect answer.
Not attempted	Not attempted.

## What would be your Answer rubric?

Answer	

## A.C.E. Rubric

Citation	
Yes! (1Point each)	Cited evidence from the text that supported the answer.
Almost	Cited some evidence that almost supported the answer.
Not yet	Cited evidence did not support the answer.
Not correct	Did not cite evidence from the text.
Not attempted	Not attempted

## What would be your Citation rubric?

Citation	

## A.C.E. Rubric

Expansion	
Yes! (1Point each)	Expanded or explained the answer-added more that supported the answer.
Almost	Expansion or explanation almost supported the answer.
Not yet	Expansion or explanation did not support the answer.
Not correct	Did not expand or explain the answer.
Not attempted	Not attempted.

## What would be your Expand rubric?

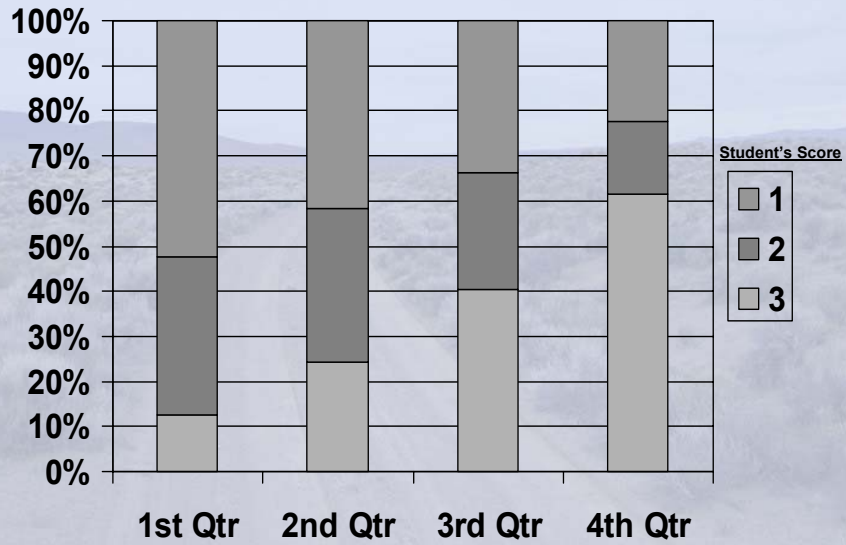
Expand

Expand	

**Charting/PDSA**

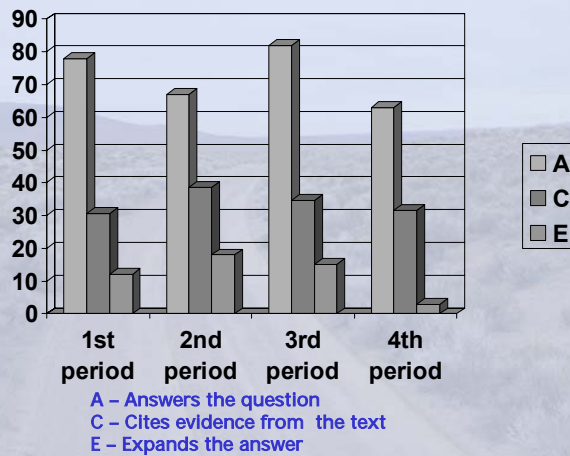


## How are we doing in meeting our ACE goal?



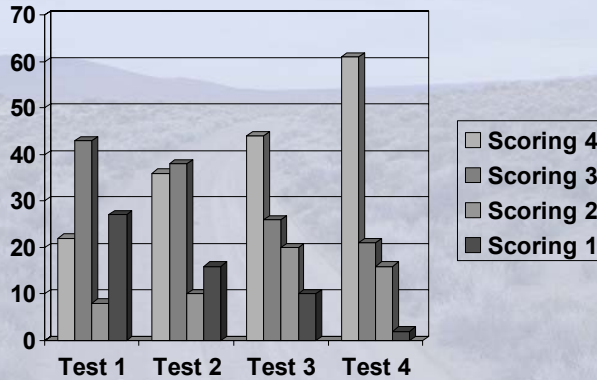
**GOAL: Increase students making a 3 on our extended response questions**

## How are we doing in ACE..ing our extended responses in Language Arts?



*\*Percentage of students who are meeting ACE expectations*

Is our class improving on Extended Response  
Tests in Math?



**GOAL: Our class will increase the percentage of students  
scoring a 4 on the math rubric!**



ACE Score-\_\_\_

I answered the question.....\_\_\_yes \_\_\_no

I supported my answer from the text.....\_\_\_yes \_\_\_no

I expanded my answer.....\_\_\_yes \_\_\_no

Name\_\_\_\_\_



ACE Score-\_\_\_

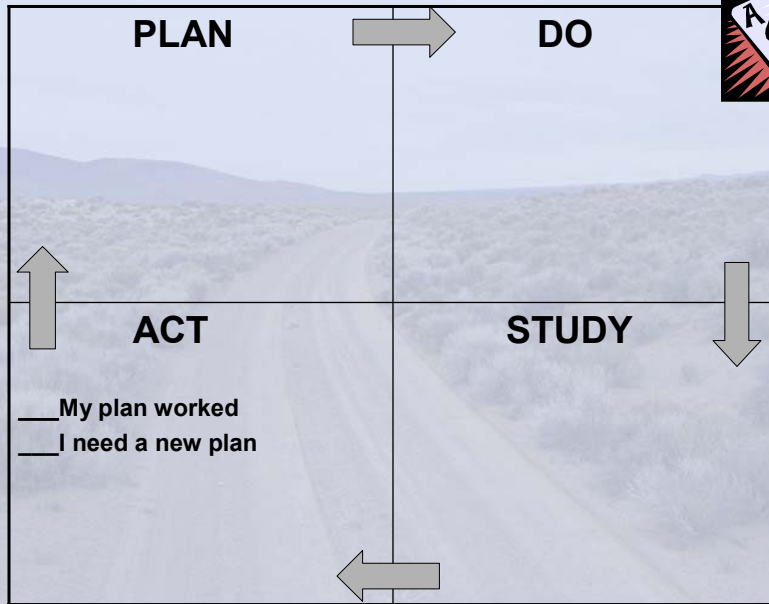
I answered the question.....\_\_\_yes \_\_\_no

I supported my answer from the text.....\_\_\_yes \_\_\_no

I expanded my answer.....\_\_\_yes \_\_\_no

Name\_\_\_\_\_

# ACE IMPROVEMENT PLAN FOR READING



ACE Improvement Plan

Name \_\_\_\_\_

Date \_\_\_\_\_

Subject \_\_\_\_\_

PLAN: \_\_\_\_\_

DO: \_\_\_\_\_

\_\_\_\_\_

STUDY: \_\_\_\_\_

\_\_\_\_\_

\_\_\_ My plan worked!

\_\_\_ I need another improvement plan!



Thanks

Karen Edwards and NMSQS